

WOODWAY®

For The Long Run®

CURVE LTG - Assembly Guide



Assembly Guide
11.17.23 AG-EN-V1



[woodway.com](https://www.woodway.com)

Table of Contents

1	Safety.....	4
1.1	Important Safety Instructions	4
2	Transportation and Storage	8
2.1	Safety Notices for Transportation.....	8
2.2	Flat Transportation	8
2.3	Upright Transportation	8
2.4	Transportation with Carrying Poles.....	9
2.5	Storage.....	9
3	Dimensions and Technical Specifications	9
3.1	Curve LTG Model.....	10
3.2	Conditions for Use	10
4	Setup and Placement	10
4.1	General.....	10
4.2	Preparation and Placement	11
5	Installation	12
5.1	Optional Tools.....	12
5.2	Included Tools and Hardware	13
5.3	Unpacking	14
5.4	Placement	16
5.5	Main Chassis Assembly.....	17
5.6	Control Console Assembly	22
5.7	Leveling Instructions	25

Note: If viewing this manual using Adobe Acrobat Reader, "Clicking" on the **Chapter Headers** or any of the **Sub-Chapter Headers** in the Table of Contents will take the reader to the desired chapter.

Clicking on the **WOODWAY** header at the top of the page will return the reader to the Table of Contents.

Call-outs within the document that are **Blue** and or **Underlined** are hyperlinks that will take the reader to specific portions of the manual when "clicked" on.

THE COMPLETE CURVE LTG OWNER'S MANUAL CAN BE FOUND @ WOODWAY.COM

<https://www.woodway.com/slat-stats/manuals/>



Copyright

The release of the instructions to third parties without the written permission of WOODWAY is prohibited. Duplication in any manner and form - including excerpts - as well as use and/or communication of the content are not permitted without written permission from WOODWAY.



European Representative:

WOODWAY GmbH
Steinackerstr. 20
79576 Weil am Rhein
Germany
Tel.: + 49 (0) 7621-940 999-0
Fax.: + 49 (0) 7621-940 999-40
E-mail: info@WOODWAY.de
Web: www.WOODWAY.de

Sales:
Tel.: +49 (0) 7621 - 940 999 - 10
E-Mail: vertrieb@woodway.de

Customer Service:
Tel.: +49 (0) 7621 - 940 999 - 14
E-Mail: service@woodway.de



Manufacturer:

WOODWAY USA, Inc.
W229 N591 Foster Ct.
Waukesha, WI 53186
USA
Tel.: 1-262-548-6235
Fax.: 1-262-522-6235
E-mail: info@WOODWAY.com
Web: www.WOODWAY.com
E-Mail: service@WOODWAY.com

1 Safety


1.1 Important Safety Instructions

The treadmills have been reliably designed, manufactured, and tested according to the latest state of technology and are in safe and technically perfect condition. Nevertheless, the devices can cause risk to persons and property if operated improperly.

For this reason, the operating instructions should be read completely and safety instructions must be observed.

Warnings attached directly to the device must be observed and kept in a legible condition. Inappropriate use will result in the rejection of any liability or guarantee claims by WOODWAY.

All WOODWAY treadmills are built to the specifications of and are intended for both commercial and residential use.

 DANGER
<p>To Reduce the Risk of Electric Shock!</p> <ul style="list-style-type: none">• Do Not operate the Heart Rate Monitor Transmitter in conjunction with an electrical heart Pacemaker. The transmitter may cause electrical disturbances.• Do Not soak or power spray the treadmill surfaces with any cleaners, water or liquids.• Do Not place any open liquid containers on any part of the treadmill. The use of sports bottles with closeable tops is acceptable.• Turn treadmill controls OFF prior to cleaning.

Read all instructions and warnings before using the treadmill.

1. The treadmill is non-motorized. The user controls the speed, including the rate at which the treadmill slows or comes to a stop. There is no motor on the treadmill, therefore there is NO Emergency Stop pull cord or lanyard. The treadmill will come to a stop on its own. It is imperative that all users familiarize themselves with the treadmill and its features.
2. The Curve LTG belt moves freely, by stepping on the rear-most part of the running surface where it is rounded, there is a danger of falling, as the force of gravity can set the running surface in motion. Always mount and dismount the running surface from either side towards the rear of the treadmill, stepping on the lowest/flat portion of the belt curvature. Always use the handrails when mounting and dismounting the treadmill.
3. Do not use any adapters, or attachments not specified by the manufacture especially those without grounding provisions. Doing so could potentially result in electrical shock.
4. Do not operate the treadmill outside or in damp / wet locations.
5. Do not soak the treadmill surfaces with any liquid; use a sprayer or damp cloth.
6. Keep ALL electrical components, away from water.
7. Do not place any open liquid containers on any part of the treadmill. The use of sport bottles with close-able tops is acceptable.
8. Always keep the running surface clean and clear of obstructions.

WARNING - To reduce the risk of injury to you and others:

- Set up and operate the treadmill on a solid, level surface.
- Use the treadmill only for its intended purpose as described in the manual.
- Keep all loose clothing and towels away from the running surface. It is also important that shoe laces do not extend beyond the bottom of the shoe.
- Keep the area behind treadmill clear and at least 78" (2 m) from walls or furniture.
- Never let loose objects (e.g. balls) roll under the treadmill. They could be pulled into the device during operation.
- Keep hands away from all moving parts.
- Never leave children unsupervised while on or near the treadmill.
- Inspect the treadmill for worn or loose components prior to use. Tighten or replace any worn or loose components prior to use.
- WOODWAY treadmills are built to handle runners weighing up to 800 lbs. (360 kg) at speeds between 0-4 MPH (0-6.5 km/h) and 400 lbs. (180 kg) at speeds greater than 4MPH (6.5 km/h).
- The treadmill running belt might not stop immediately if an object becomes caught in the belt or rollers.
- WOODWAY recommends that facilities that have users who are elderly, are children, or have health limitations, use a safety gantry harness. The manufacturer declines any liability for personal injury and/or property damage which could have been avoided with the use of a gantry harness system.
- Care should be taken when mounting and dismounting the treadmill. Never mount or dismount the treadmill while the running belt is moving. Use the handrails whenever practical or necessary.
- Wear proper athletic shoes with rubber or high-traction soles. Do not use shoes with heels or leather soles. Ensure no stones are embedded in the profile of the soles.
- Allow several minutes to bring your heart rate into the training zone depicted in the manual. Walk slowly after your workout to allow your body sufficient time to cool down and your heart rate to decrease.
- The safety and integrity designed for the machine can only be maintained when the treadmill is regularly examined for damage and/or wear and repaired if necessary. It is the sole responsibility of the user/owner or facility operator to ensure that regular maintenance is performed.
- Do not attempt to service your treadmill yourself without first contacting WOODWAY Service. It is preferable that mechanics have successfully completed WOODWAY factory-authorized service school or equivalent.
- Worn or damaged components should be replaced immediately or the treadmill should be removed from service until the repair is made. Only manufacturer supplied or approved components should be used to maintain and repair the treadmill. **SAVE THESE INSTRUCTIONS**

NOTE: A safety sign has been included with your treadmill. It is the responsibility of the owner to post this sign in a visible area near the machine.

SAFETY FIRST

THE FITNESS EQUIPMENT IN THIS FACILITY PRESENTS HAZARDS WHICH, IF NOT AVOIDED, COULD CAUSE SERIOUS INJURY OR DEATH.

PRIOR TO USING THIS EQUIPMENT, READ THE WARNING LABELS AND INSTRUCTIONS AFFIXED TO EACH MACHINE.

IF YOU ARE UNSURE OF HOW TO USE A MACHINE, SEEK ASSISTANCE.

IMMEDIATELY REPORT ANY PIECE OF EQUIPMENT THAT IS NOT FUNCTIONING PROPERLY TO OUR STAFF SO IT MAY BE EVALUATED AND SERVICED PROMPTLY.

DO NOT ATTEMPT TO USE OR FIX ANY PIECE OF EQUIPMENT THAT IS NOT FUNCTIONING PROPERLY.

WHILE USING THIS TREADMILL, THE SAFETY LANYARD MUST BE WORN AT ALL TIMES.

MAKE SURE SHOES ARE TIED TIGHTLY AND LACES DO NOT FALL BELOW THE BOTTOM OF THE SOLE TO AVOID FALLING.

DRINK PLENTY OF LIQUIDS. IF FEELING FAINT, STOP USE IMMEDIATELY.

ASTM F1749

EC Declaration of Conformity**EG-Konformitätserklärung**
*EC Declaration of Conformity***Hersteller:****Manufacturer:**

WOODWAY USA Inc.
W229 N591 Foster Court
Waukesha, Wisconsin 53186
USA
Phone: +1 262-548-6235
E-Mail: info@woodway.com
Web: <http://www.woodway.com>

Europäischer Repräsentant:**European Representative:**

WOODWAY GmbH
Steinackerstr. 20
79576 Weil am Rhein
Germany
Phone: +49 (0) 7621-940999-0
E-Mail: info@woodway.de
Web: <http://www.woodway.de>

Hiermit erklärt der Hersteller in eigener Verantwortung die Übereinstimmung der nachfolgend aufgeführten Produkte in der gelieferten Ausführung mit den anwendbaren EG-Richtlinienanforderungen:

Hereby the manufacturer declares in sole responsibility that the product in the form as delivered and described below is in conformity with the following European Directives:

Richtlinie 2001/95/EU DES EUROPÄISCHEN PARLAMENTS UND DES RATES
Directive 2001/95/EC OF THE EUROPEAN PARLIAMENT AND OF THE COUNCIL

Richtlinie 2011/65/EU DES EUROPÄISCHEN PARLAMENTS UND DES RATES
Directive 2011/65/EC OF THE EUROPEAN PARLIAMENT AND OF THE COUNCIL

Richtlinie 2012/19/EU DES EUROPÄISCHEN PARLAMENTS UND DES RATES
Directive 2012/19/EC OF THE EUROPEAN PARLIAMENT AND OF THE COUNCIL

Produktbezeichnung:**Product designation:**

Motorloses Laufband (Laufbandergometer für Trainingszwecke)

Motorless Treadmill (Treadmill-Ergometer for Training)

Typenbezeichnung:**Product types:**

Curve, Curve XL, Curve Trainer, Curve LTG

Angewandte Normen:**Used standards:**

ISO 20957-1: 2013-09

ISO 20957-6: 2021-02

Die Konformitätserklärung gilt für alle oben gelisteten Modelle, die ab dem 1. May 2023 durch WOODWAY USA Inc. hergestellt worden sind. Die Gültigkeit dieser Konformitätserklärung endet mit der Veröffentlichung einer Konformitätserklärung neueren Datums, falls dies durch technische Änderungen oder durch gesetzliche Änderungen der Normen und Standards erfolgen muss.

The declaration of conformity is valid for all the models listed above, which were produced on after 1 May. 2023 by WOODWAY USA Inc. The validity of this declaration of conformity ends with the publication of a new declaration of conformity if this becomes necessary due to technical modifications or changes in the standards.

Wisconsin 53186 USA, May. 1st, 2023

Douglas Bayerlein
Präsident / President WOODWAY USA, Inc.

2 Transportation and Storage

2.1 Safety Notices for Transportation

Check the treadmill for damage upon arrival. Also check and compare supplied accessories with the corresponding delivery note.

The manufacturer is not liable for damages and missing parts if this information was not recorded in writing on the delivery note upon delivery of the unit. Damage or defects must be reported to the carrier and to the responsible WOODWAY dealer immediately.

WARNING

Risk of Injury by machine Falling or Falling Over!

Improper transportation of the device may lead to it falling over and causing injury or equipment damage.

- Only transport in compliance with the safety regulations.
- Only use the supplied carrying tubes for transport.
- Never lift the device using the railing or protective coverings.
- Ensure stable center of gravity and steadiness during transportation.

WOODWAY Service If necessary, transport or relocation can be organized and carried out by authorized WOODWAY service partners.

For further information please contact WOODWAY Customer Service.

2.2 Flat Transportation

The Curve LTG treadmill can be transported, partially or fully assemble on a flat surface using a commercial grade transport dolly that is 30"x18".

NOTE: Side covers **MUST** be removed before setting the unit on the dolly to avoid cover damage



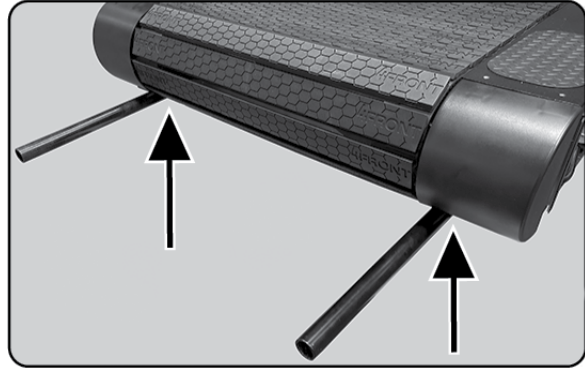
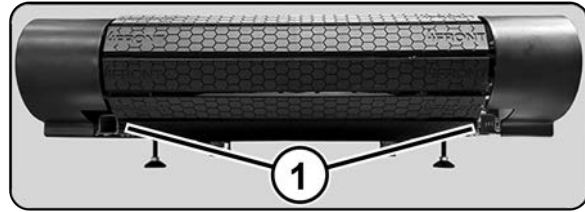
2.3 Upright Transportation

For narrow transport routes it is possible to transport the treadmill vertically (e.g. narrow door width or for climbing stairs). For this, handrails and side panels must be removed.

When transporting in an upright position, the device must be additionally secured against accidental tipping or rolling since the center of gravity is not in the middle of the device.

2.4 Transportation with Carrying Poles

Two lift bars (round steel tubes) are included as treadmill accessories. The lift bars can be inserted into the **Front Ports (1)** located at the front end of the treadmill frame. At the rear of the unit is a grab rail that can be used to lift the unit. The side covers and railings can be removed to facilitate transport.



2.5 Storage

The device may only be stored in closed, dry rooms. It is absolutely necessary to prevent contact with moisture (rain, fog, etc.)

The following environmental conditions are prescribed for transportation and storage:

- Temperature: 0°F to 120°F (-18°C to +49°C)
- Relative humidity: 20-95% (not condensed)
- Air pressure: 700-1060 hPa

3 Dimensions and Technical Specifications

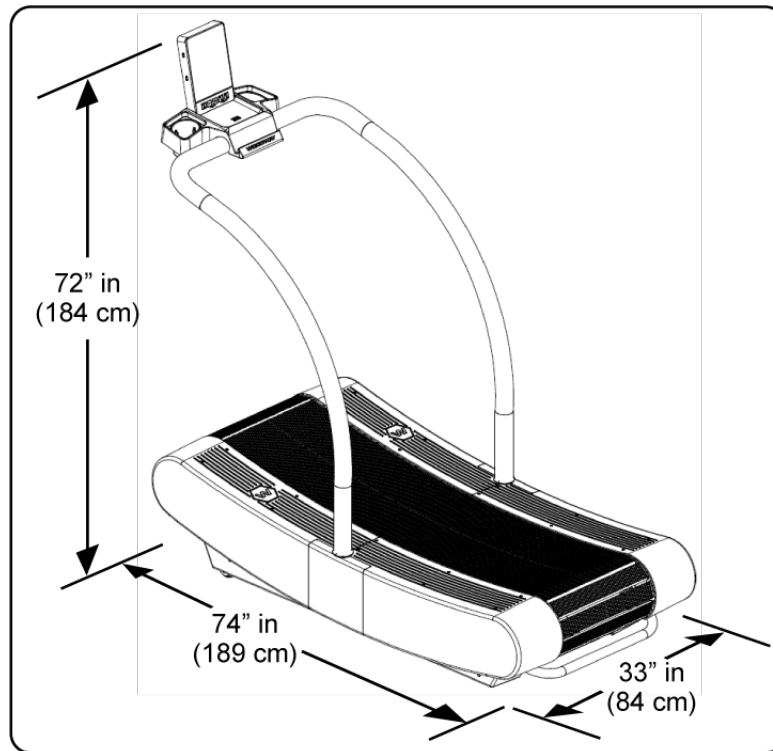
Note: Curve LTG treadmills have no drive motor. The display system is powered by an enclosed generator.

Note: This equipment is not intended for use in damp locations.

Running Surface	16.6" X 61.8" (42.2 cm X 157.0 cm)
Slats	60 Rubber on plastic composite
Drive System	98 Roller Bearings and 12 Guide Rollers
Overall Dimensions	34" W X 74" L X 72" H (86 X 189 X 184 cm)
Mass/Weight	296.8 lbs. (134.6 kg)
Standard Display (Self Powered)	Standard Display Board: Displays - Speed, Time, Energy, Group/Circuit Mode, Lap, Heart Rate (When paired with a smart device)
Power Requirements	N/A (Optional Charging cord 12V, 1.5A)
Variable Resistance	N/A

An Optional Charging Cord is available through WOODWAY Parts/Service Department to help keep the display charged in times of extended non-use. WOODWAY Part Number - 30-010175

3.1 Curve LTG Model



3.2 Conditions for Use

Description	Parameters
Ambient Temperature	50°F to 104° (10°C to 40°C)
Relative Humidity	20-95% (not condensed)
Enclosure Rating	IP2x

4 Setup and Placement

4.1 General

Ensure that the conditions applicable to basic safety and health requirements are met, and that Chapter 1 "Safety" has been read and understood.

Read owners manual instructions completely before installation.

Before using the unit, operational and functional safety systems are to be tested, including correct installation and operator instructions.

Check immediately upon delivery for any signs of transportation damage and immediately report any damages to the transport company and WOODWAY.

ATTENTION

Installing after Storage or Transport

The formation of condensation on the cooled electronic parts may cause the treadmill to malfunction and damage to the electronics.

- Before installing after storage or transport, the treadmill must stand at room temperature for approximately 3 hours to become acclimated.

4.2 Preparation and Placement

ATTENTION

Prepare a Stable Surface

Before the device is installed, the surface must be prepared. The total weight of the device (with all the accessories and options) is to be considered.

- Prepare a stable and sturdy surface.
- Only install the device on a level, stable, and sufficiently sturdy surface. If necessary, install an additional base plate/floorboard.

Due to the heavy weight of the device, it is recommended to install the treadmill as close to its final location as possible.

NOTICE

The WOODWAY Curve LTG fitness treadmill uses Metric screws, bolts and nuts for fastening and assembly.

The following further instructions for installation are to be observed:

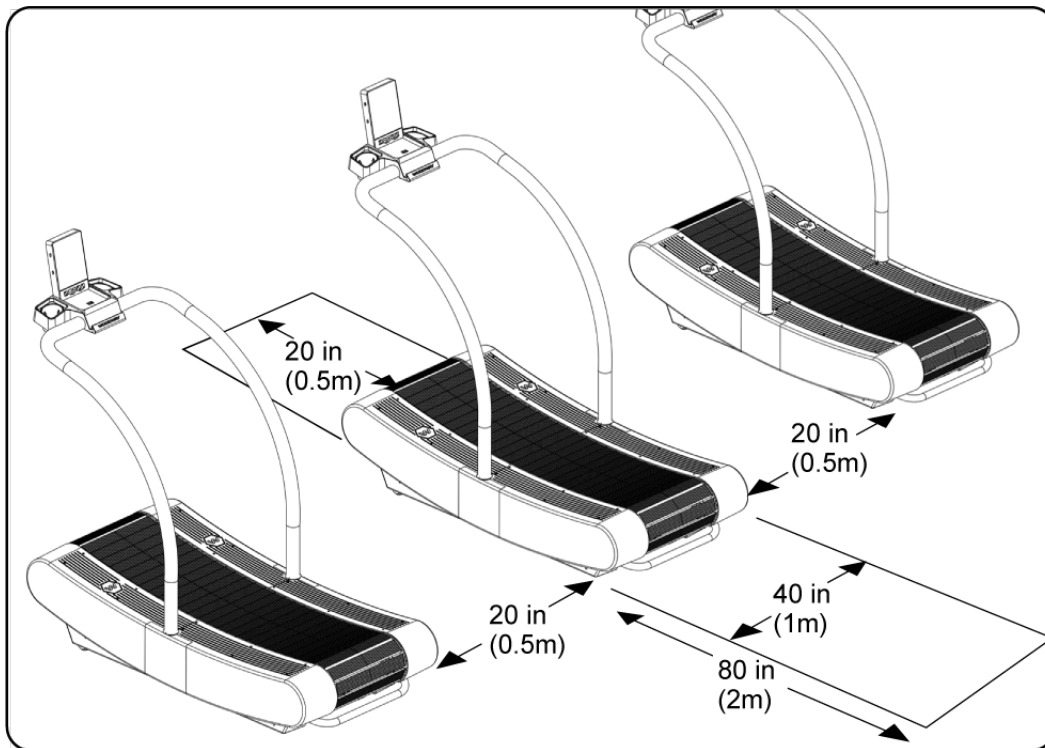
- When installed on upper floors, the device must be placed as far as possible in a corner of the room so that sufficient stability is guaranteed. The structure of the building must be checked in advance.
- The treadmill should not be installed close to a radiator or other heat source.
- Due to moving parts on the underside, the device must not be placed directly on thick or high-pile carpeting. In this case, a mat should be placed under the device. This will prevent lint from entering into the treadmill and at the same time reduce carpet wear.
- WOODWAY has appropriate mats available. For more information, call WOODWAY customer service.
- With larger devices, particular attention must be paid to the ceiling/floor load capacity at the installation site. This must be higher than the total weight (device weight plus the dynamic weight of a running person) and approved by an authorized authority with the treadmill representative.

4.3 Safe Fall Area

When using the treadmill, especially fast movements (fast running, etc) increases the risk of falling. For this reason, a safe fall area of at least 40in x 80in (1 x 2 m) must be maintained behind the treadmill.

No obstacles may be located in this safe fall area. Objects (e.g. furniture, plants, training materials, ladders, etc) may not be placed in this area, and sloping ceilings may not extend into the safety area.

When installing multiple treadmills ensure the distance between each unit is at least 20in (0.5 m).



5 Installation

5.1 Optional Tools

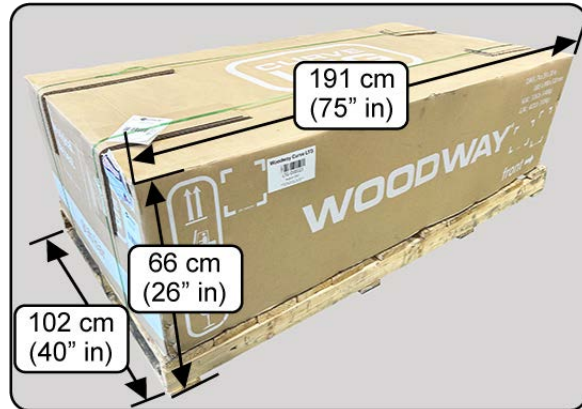
The Curve LTG ships with small tools for assembly, additional tools may aid in unpacking, and portions of assembly.

- 1/2" or 13mm Socket Wrench
- Box Cutter / Utility Knife
- Soft Blow Rubber Mallet

5.3 Unpacking

- **WARNING:** To avoid injury, use caution when moving and lifting the Curve LTG during unpacking and assembly.
- Move the boxed unit as close to the final installation location as possible, keeping in mind the specified required Safe Fall Area.

1. The Curve LTG will be delivered enclosed in a shipping box, strapped to a wooden skid/pallet.
Crated dimensions: 191 x 102 x 66 cm (75" L x 40" W x 26" H).
Weighing 317 lbs (144 kg).
Position the crated unit as close to the final installation point as possible, keeping in mind the recommended safe fall area [\(5.3 Safe Fall Area\)](#)



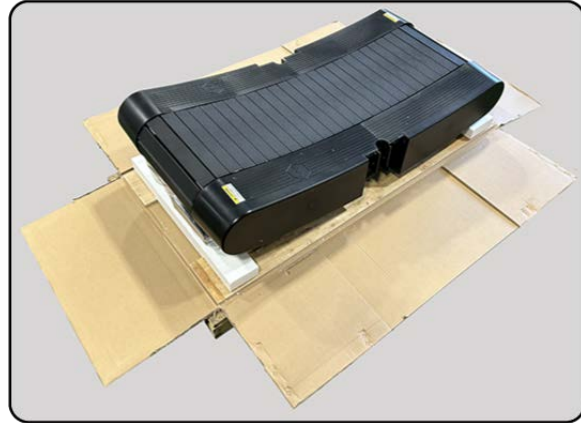
2. Cut the shipping straps and remove the top of the shipping box by lifting it straight up.



3. Remove the wooden internal braces by lifting them straight up. (Save for possible use later)
Remove the **Accessory Packages (1)** and packing support foam inserts from each end of the box.



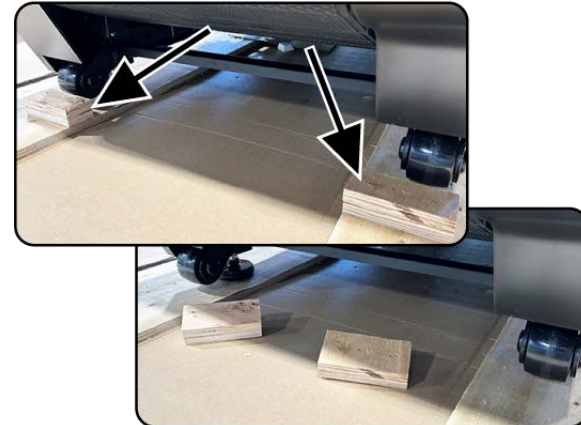
4. Cut each corner of the shipping box and fold down the sides as shown.



5. Carefully remove the two plastic side covers from under the front of the unit, and set them aside with the accessory packages. Remove the supporting packing foam from the front of the unit.



6. There are two front wheel stops nailed to the base skid support, remove them using a screwdriver or hammer to unattach them from the base support platform. This will aid in later unloading of the treadmill if it will be unloaded by rolling off the skid.

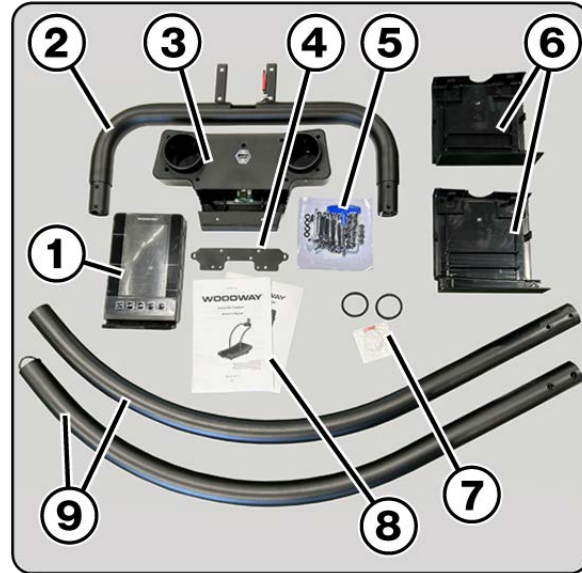


7. Pull the **Packing Support Foam (1)** from the rear of the unit, and slide the handrails out from beneath the unit.



8. Take stock of Components:

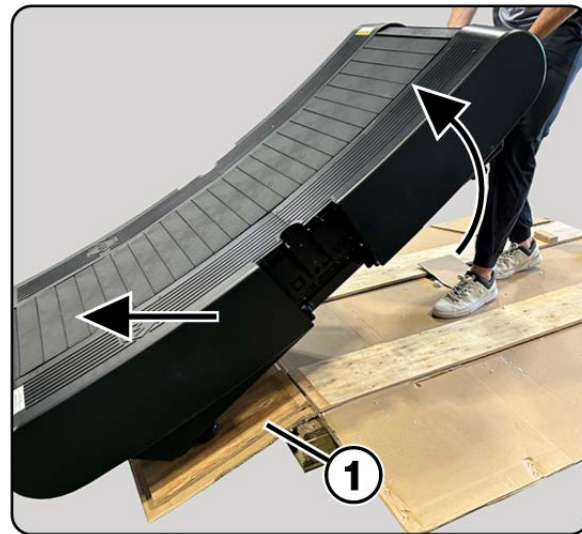
- 1) Control Console
- 2) Control Console Support Hoop
- 3) Control Console Support Tray
- 4) Metal Console Support Plate
- 5) Hardware and Tool Blister Pack
- 6) Right and Left Side Covers
- 7) Handrail Grommets, Lithium Grease
- 8) Manuals
- 9) Right and Left Handrails



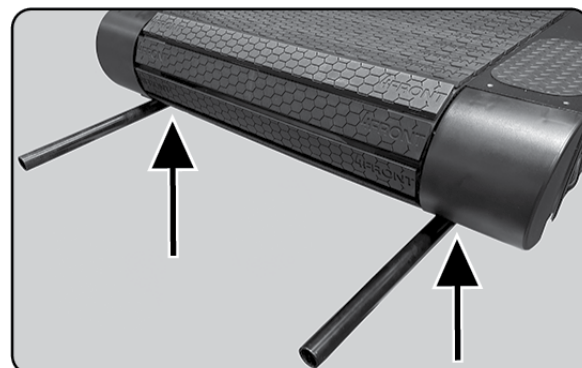
5.4 Placement

1. Unloading the unit from the skid can be done in two ways.
One is to use two pieces of **Wood (1)** left over from the shipping materials as "ramps" to roll the unit off the skid. At the rear of the treadmill there is a grab rail that can be used to lift the unit up and onto the treadmill's two front wheels.

Note: Two people are recommended for this unloading method.



2. Lifting Poles Method: Two lift bars (round steel tubes) are included as treadmill accessories. The lift bars can be inserted into the ports located at the front of the treadmill frame. Using two or more people, the lifting poles, and rear grab rail can be used to lift and position the unit where desired.



5.5 Main Chassis Assembly

1. With the treadmill in position, assembly can begin by installing the handrails. Prepare the handrails for installation by sliding the supplied Handrail **Grommets (1)** onto the lower portion of the handrail as shown.



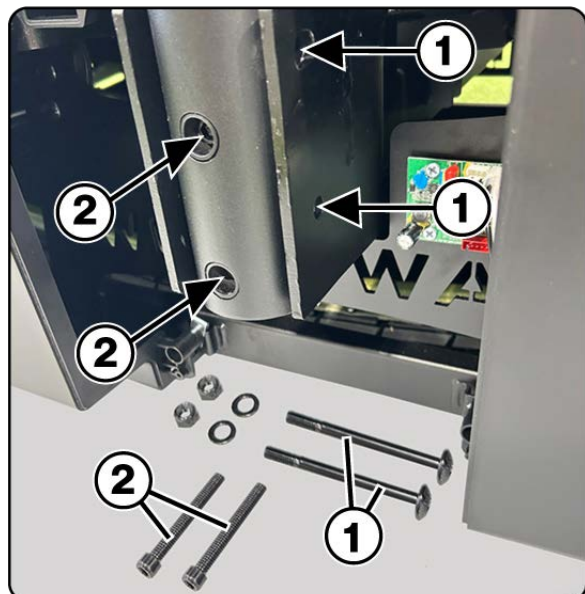
2. Position the Right Handrail as shown, pointing towards the front of the treadmill.
Note: The Right Handrail is the rail that has wires running through it.



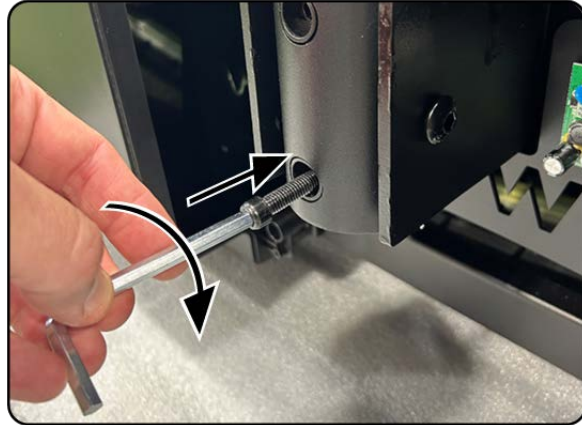
3. Position the handrail so the holes on the handrail align with the two holes on the mounting flanges.

Install the Two **M8 x 85mm Button Head Socket Cap Bolts (1)** through the chassis flanges and handrail, install a washer and nylon lock nut on each bolt. **(Do NOT Tighten Bolts)**

Install the Two **M8 x 55mm Socket Cap Bolts (2)** into the side of the handrail (rotating/shifting the handrail may help to align the bolt holes in the chassis (See Step 4). Install the bolts a couple revolutions. **(Do NOT Tighten Bolts)**



4. The Two **M8 x 55mm Socket Cap Bolts** get installed into recessed holes on the side of the handrail. Use a 6mm Allen Wrench to guide the bolt. While turning the wrench, gently shift the handrail to align the bolt with the threads on the chassis.

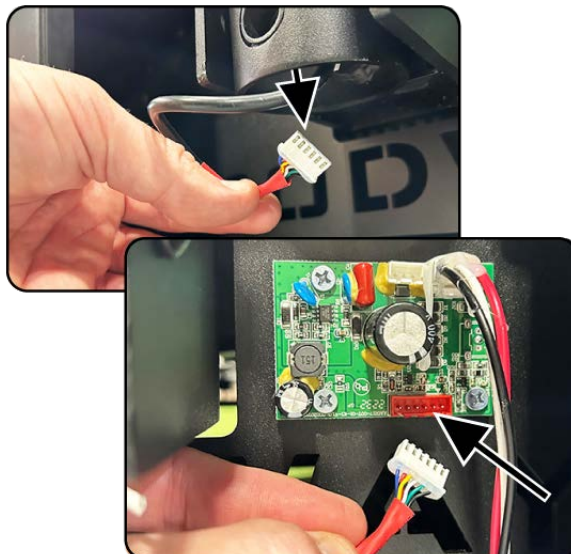


5. Position the Left Handrail as shown and repeat the bolt installation procedure as described in steps 3 and 4 to mount the Left handrail.
(Do NOT Tighten Bolts)



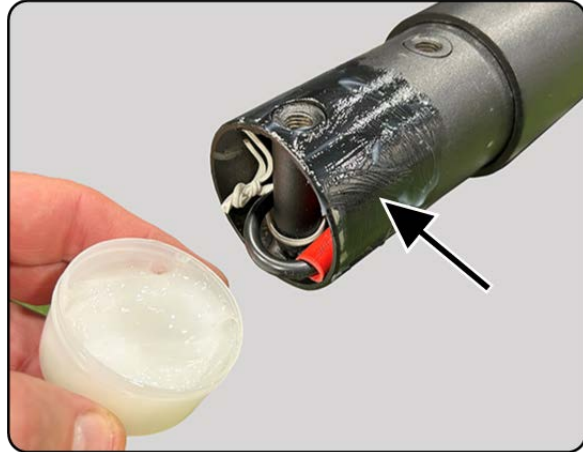
6. Inside the Right Handrail is the electrical communication cord, carefully remove cord from the lower portion of the handrail.

Plug the cord into the circuit board just ahead of the handrail, ensuring the connector is securely inserted into the circuit board receiver socket.

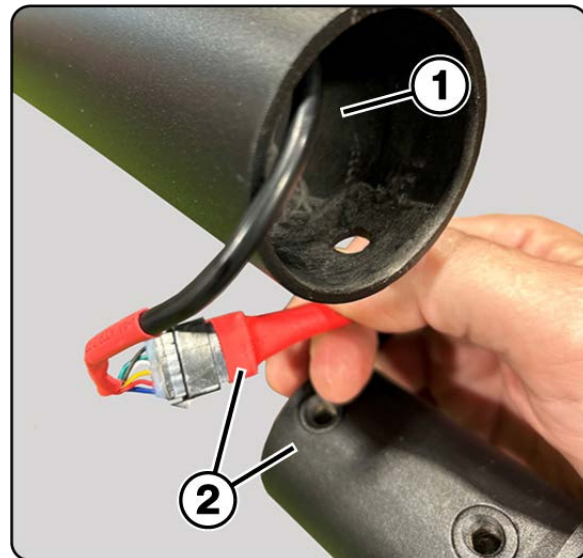


7. With the handrails installed, and the bolts NOT Tightened, the next step is to prep the ends of the Control Console Support Hoop.
Shipped with the treadmill is a small container of Lithium Grease, use a small amount to coat each end of the Support Hoop.
This will aid the installation of the hoop into the handrails.

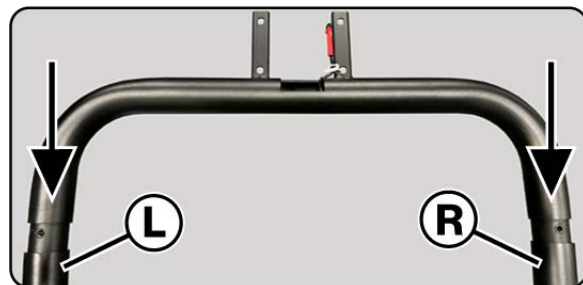
NOTE: The right side of the Support Hoop has wiring that will be connected to the wiring in the right handrail.



8. Carefully remove the wiring harness from the **Right Handrail (1)** and connect it to the wiring harness on the Right side of the **Support Hoop (2)**.



9. Insert the Support Hoop into the Left and Right handrails (use caution as to not pinch or snag the wires and or connector).



10. If the Hoop does not slide into the handrails easily, it can be gently tapped into position using a soft-blow rubber mallet. Tap the Support Hoop gently, alternating from Right to Left sides until it is seated completely into each of the handrails.



11. Install Two **M8 x 15mm Button Head Socket Cap Bolts (1)** into each of the handrails to secure the Support Hoop. Use a 6mm Allen Wrench to tighten the Support Hoop bolts.

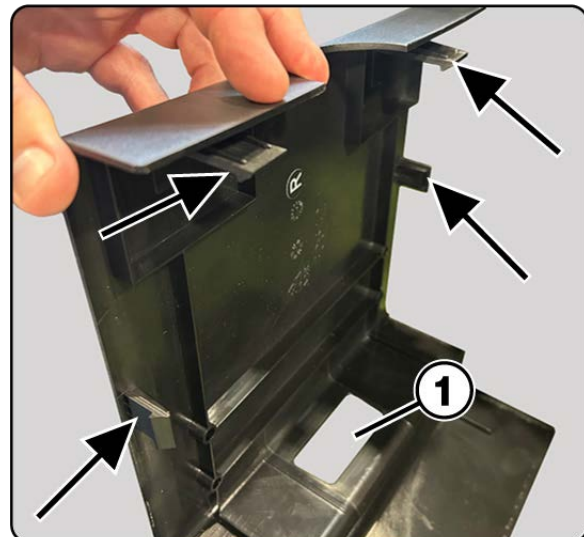
With the Support Hoop tightened, the lower handrail mounting bolts can now be tightened.

Use a 6mm Allen Wrench and 13mm Wrench to tighten all 4 bolts on each of the Handrails.

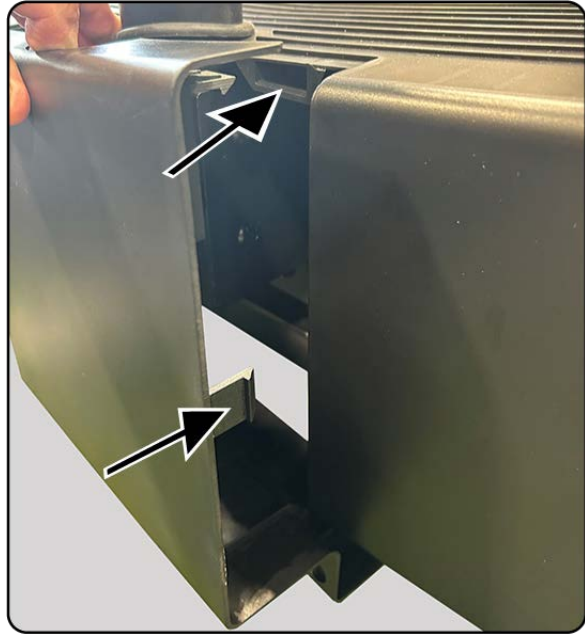


12. Install the Right and Left Side Panels. The Panels are labeled R and L for reference, note there are four locking that align with ports on the top of the main chassis covers and two on the sides that clip to the main panels.

At the bottom of the panel is an opening that is used as a grab point for removing the cover if needed.



13. Align the tabs to the ports as shown, insert the tabs and push the cover into place.



14. Secure the bottom of the cover using Two **M4 x 16mm Screws**.

Repeat the process for the other cover.



15. With the side covers installed, slide the Handrail Grommets down into position as shown.

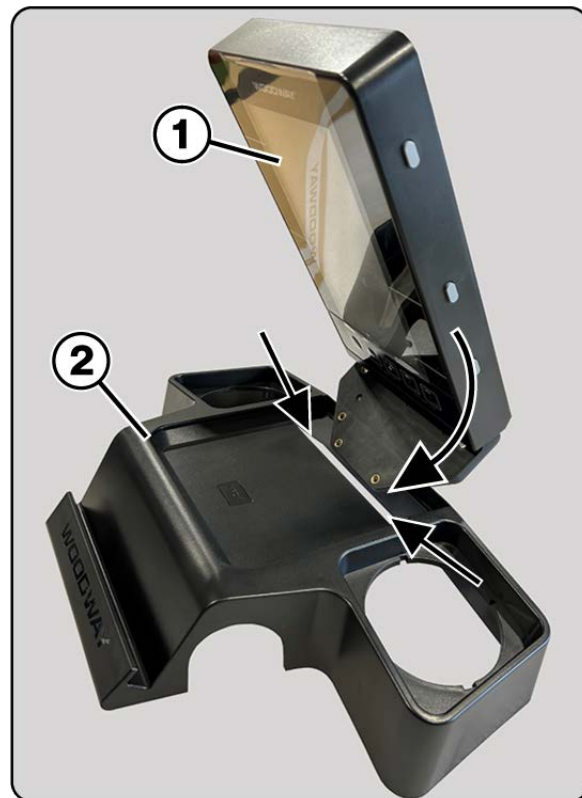


5.6 Control Console Assembly

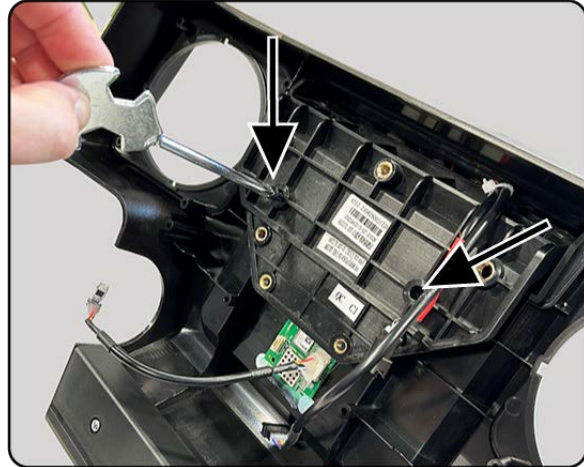
1. Prepare the **Console Support Tray (1)**, by separating the **Lower Cover (2)** and **Drink Holders (3)** from the Main Support Tray.



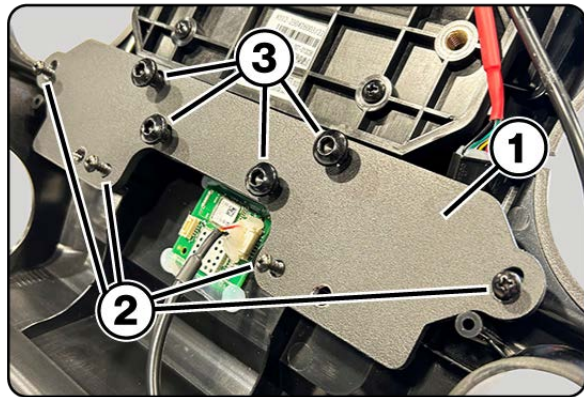
2. Install the **Control Console (1)** into the **Console Support Tray (2)** as shown. Feed the Two wire harness's through the rear slot in the Support Tray. Then slide the lower portion of the Control Console into the slot at the rear of the Support Tray while rotating it into position.



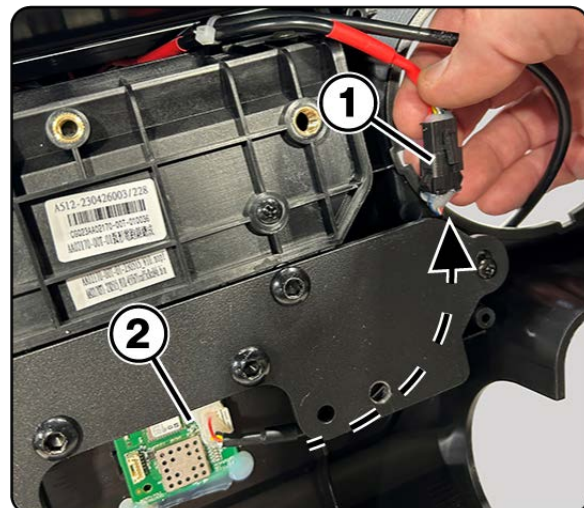
3. Rotate the assembly to access the bottom side and install Two **M3 x 25mm Screws**, and Two **M3 Washers** securing the Control Console to the Support Tray.



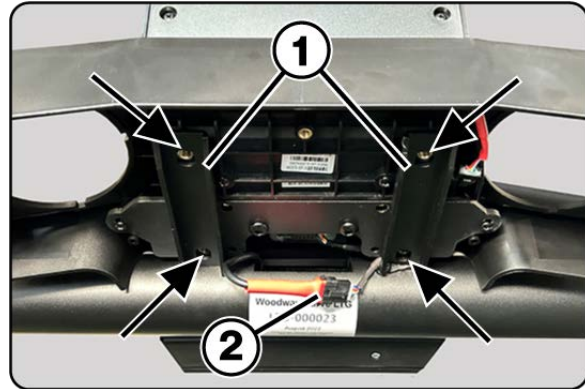
4. Install the **Metal Console Support Plate (1)** using Four **M3 x 12mm Screws (2)** and Four **M6 x 15mm Socket Cap Bolts (3)**



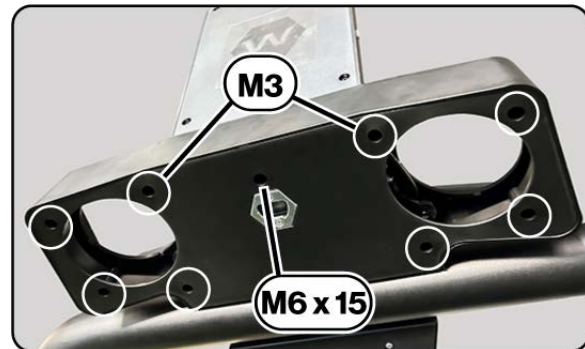
5. Connect the 5 Pin Wiring Harness from the **Control Console (1)** to the **Support Tray Circuit Board (2)**.
Ensure the wires are beneath the Metal Support Plate, between the Plate and the Support Tray.



6. Set the assembled Control Console on top of the **Support Hoop Rail Extensions (2)** as shown and secure the assembly using Four **M8 x 15mm Button Head Socket Cap Bolts**. Tighten all Four bolts using a 6mm Allen Wrench. With the console attached, next connect the **Wiring Harness (2)** from the Support Hoop to the Control Console harness, ensure the connection is secure. Carefully tuck the wires into the Support Hoop opening.



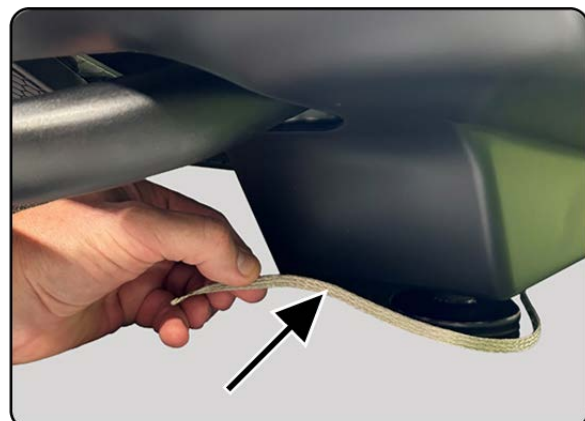
7. Install the Control Console lower cover using Eight **M3 x 12mm Screws** at the outer corners of the cover. The Center Bolt just above the bottle opener uses One **M6 x 15 Socket Cap Bolt**, fasten using a 5mm Allen Wrench.



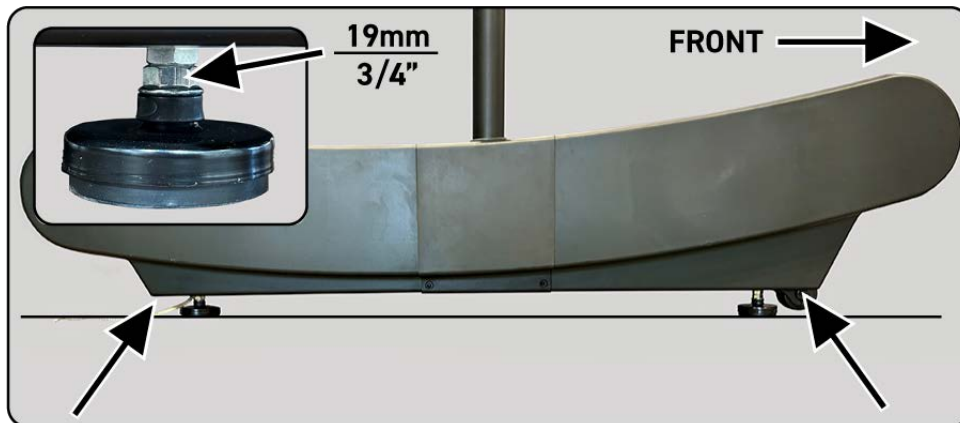
8. Install the two Drink Holders on each side of the Control Console assembly. There are Four Tabs on the holders, one of the tabs is wider than the others, the wider tab is positioned towards the outer most edge of the console. Align the tabs and push the drink holder into place.



9. Located near the Right rear leveling foot is a braided wire Ground Strap, position the strap so that it is beneath the chassis so as not to be a trip hazard. Ensure the strap is contacting the floor surface.



5.7 Leveling Instructions



Since the Curve LTG's running surface is curved, leveling the unit Front to Rear is done by ensuring the chassis is parallel to floor, use a measuring rule to ensure the chassis is the same distance from the floor surface at its furthest points. The front wheels should be an 1/8"-1/4" (3 - 6mm) from the surface of the floor when leveled.

Level the unit side to side by placing a level in the center of the tread surface.

Use a 19mm (3/4") wrench to make adjustments to the leveling feet at each corner of the chassis until it is level Right to Left, and the chassis is parallel to the floor Front to Rear.

Confirm leveling feet are equally weighted by carefully lifting the unit slightly at each corner.

