



How to Replace Rower Fan

This guide shows you how to replace the fan in the Rogue Rower.



TOOLS:

- Phillips/Cross Head Screwdriver (1)
- 14mm Wrench (1)

PARTS:

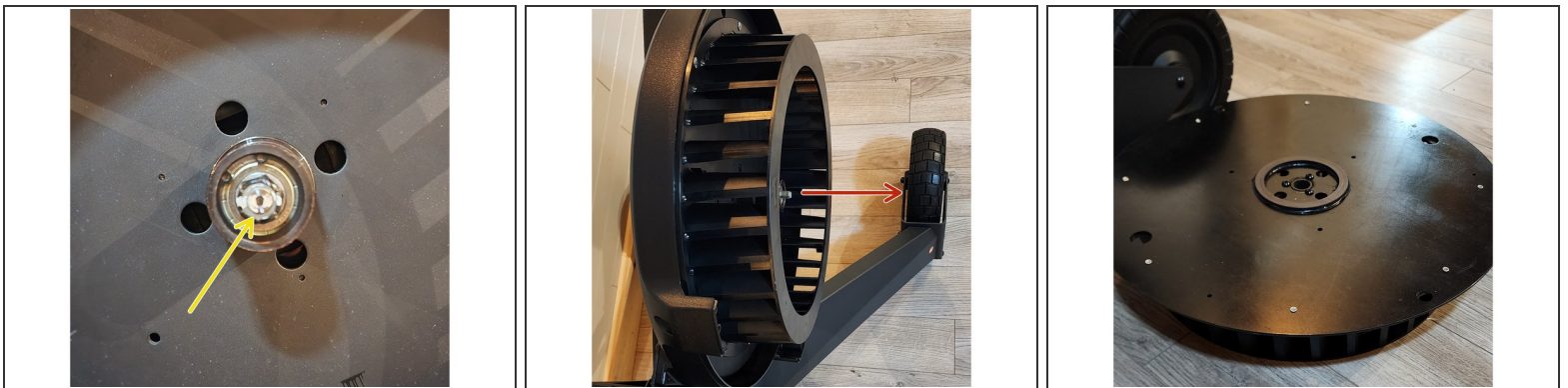
- Replacement Fan (1)
-

Step 1 — Remove fan housing.



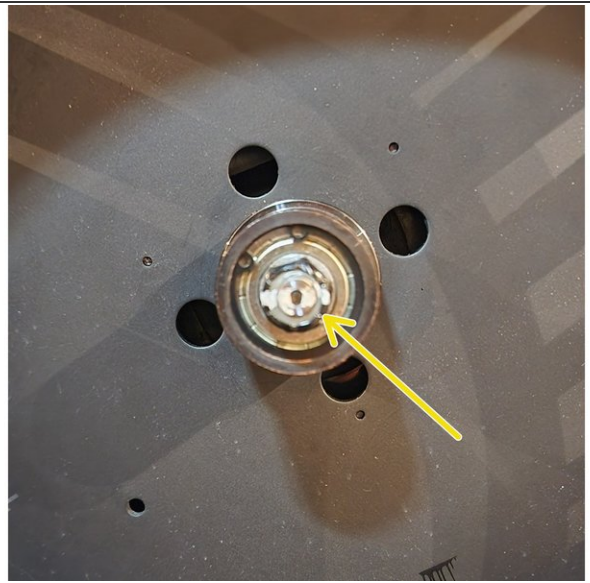
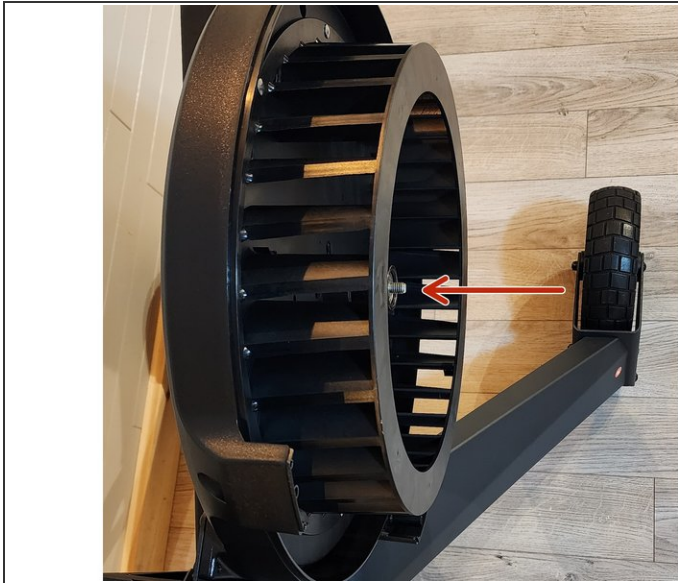
- Loosen the screw on the mesh ring a few turns.
- Keeping pressure on the face of the fan housing, use the Phillips screwdriver to remove the four screws.
- Remove the housing and the mesh ring.

Step 2 — Remove fan.



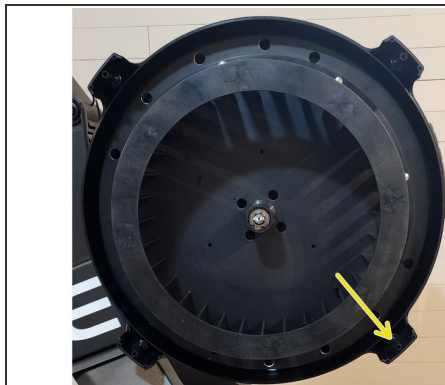
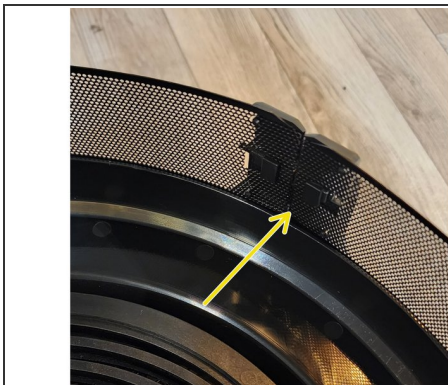
- Using the 14mm wrench, remove the nut from the fan axle.
- NOTE the witness mark painted in white across the nut and axle to maintain the nut's position.
- Carefully pull the fan straight away from the rower.
- Place the fan on its face to protect the delicate magnetic ring on the rear of the fan.

Step 3 — Replace the fan.



- Carefully slide the replacement fan onto the axle.
- Using the 14mm wrench, tighten the nut back onto the axle.
- NOTE when the nut tightens against the face of the axle bearing, make sure the witness marks line back up.

Step 4 — Position the mesh ring.



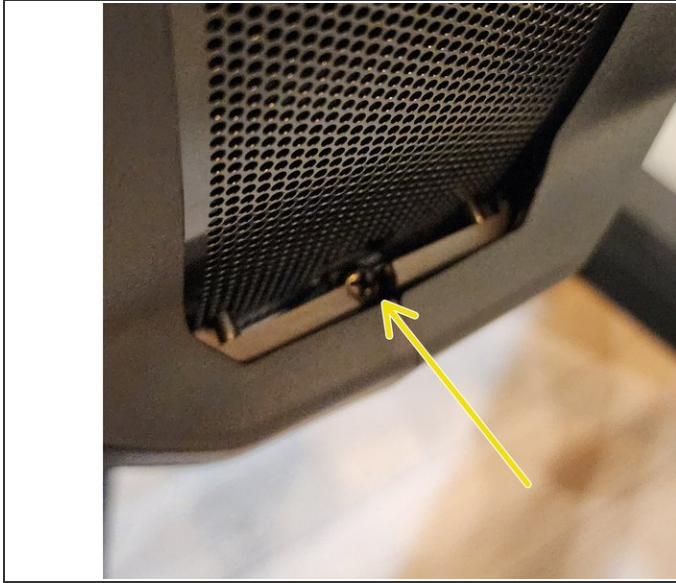
- Line up the joint of the mesh ring with the corners of the housing and rower as shown in the first two pictures.
- NOTE make sure the mesh ring sits in the groove around the fan housing.

Step 5 — Replace the housing.



- NOTE make sure the mesh ring sits in the groove on the rower side of the housing.
- Line up the four corners of the fan housing with the rower side of the housing and press it into place.
- Keeping pressure on the face of the housing, start the four screws by hand.

Step 6 — Tighten the screws.



- With pressure still on the face of the fan housing, tighten the mesh ring screw until it is snug.
- While continuing to maintain pressure on the face of the fan housing, use the Phillips screwdriver to tighten the four screws.
- NOTE do not over tighten the screws.