



How to Replace the Generator

This guide will show you how to replace the generator in the event of damage.



INTRODUCTION

CAUTION The data cable for the console is routed through the mast. Be careful to keep tension off the wire during this procedure.

TOOLS:

- [Philips Screwdriver](#) (1)
- [T27 Wrench](#) (1)

PARTS:

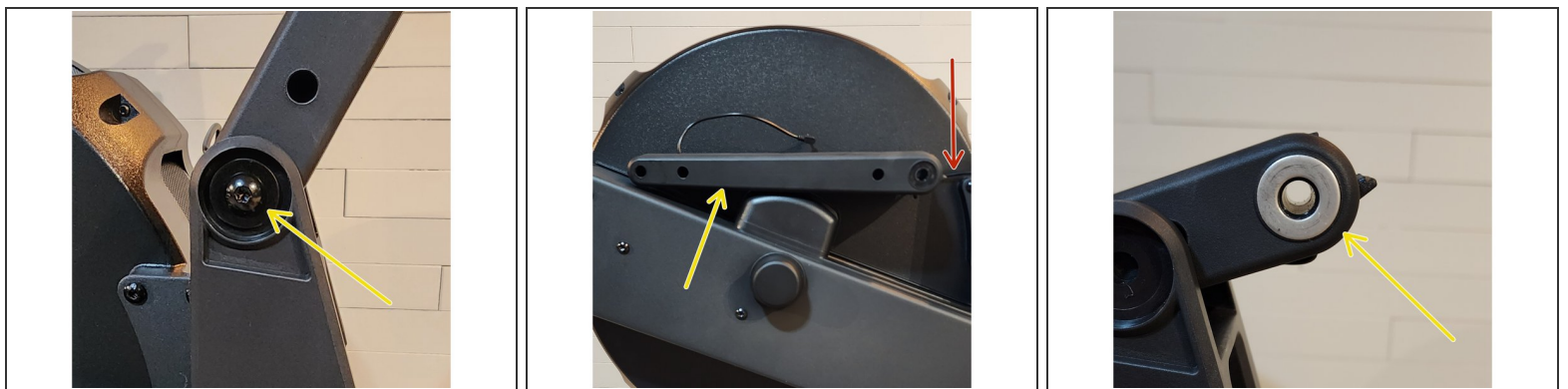
- [Replacement Generator](#) (1)
-

Step 1 — Remove the console.



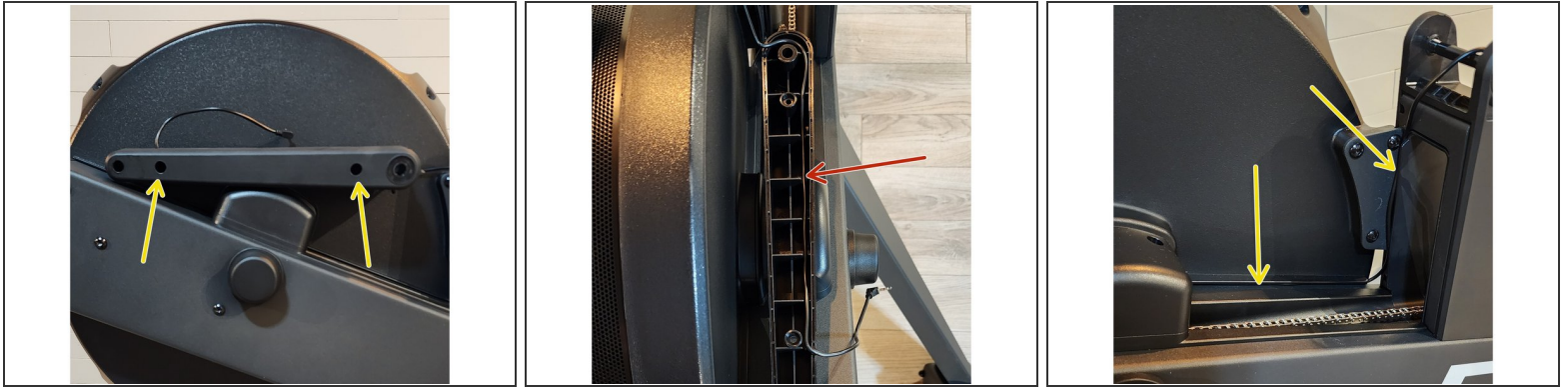
- Unplug the console.
- Using the T27 wrench, remove the bolt holding the console to the mast.

Step 2 — Remove the mast.



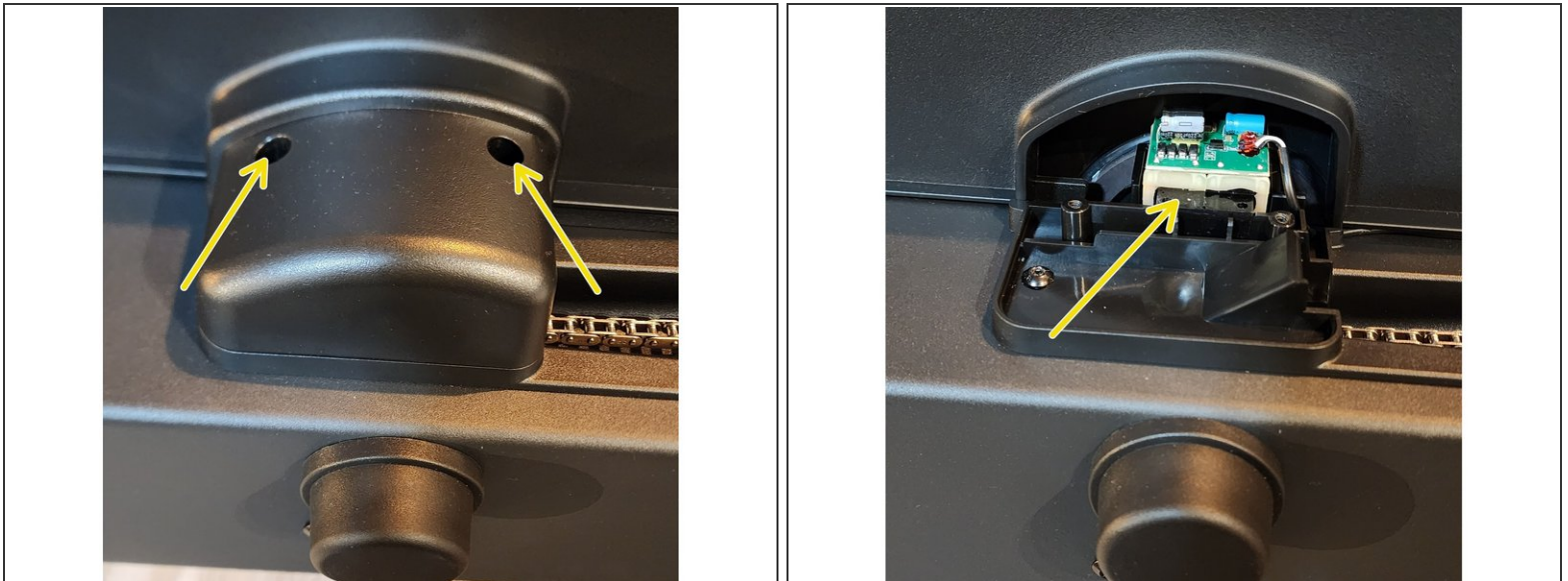
- Using the T27 wrench, remove the bolt holding the mast to the rower.
- Rest the mast on the generator cover.
- NOTE The wire is still attached to the rower.
- NOTE There are washers between the rower and mast. Save them for reassembly.

Step 3 — Disassemble the mast.



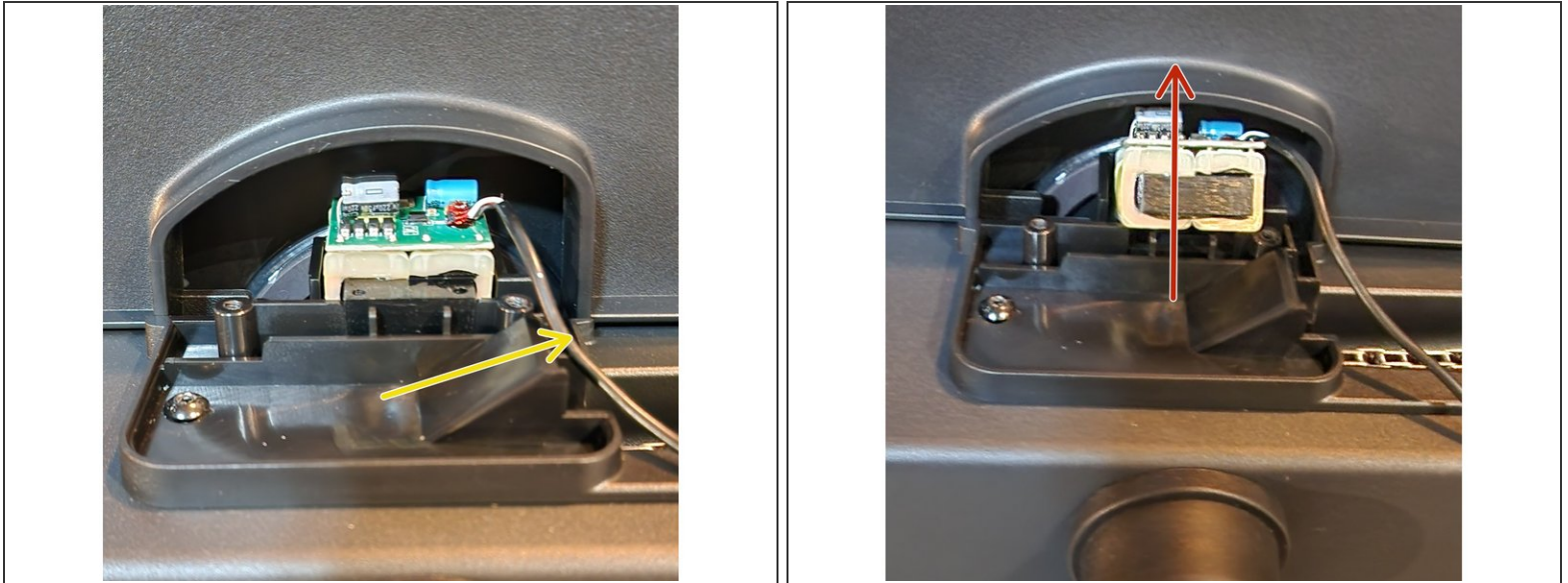
- Using the Phillips screwdriver, remove the screws holding the two halves of the mast together.
- NOTE The path the wire takes inside the mast for reassembly.
- Pull the wire free and set the disassembled mast aside.
- NOTE how the wire is routed through the grooves to the generator.

Step 4 — Remove the generator cover.



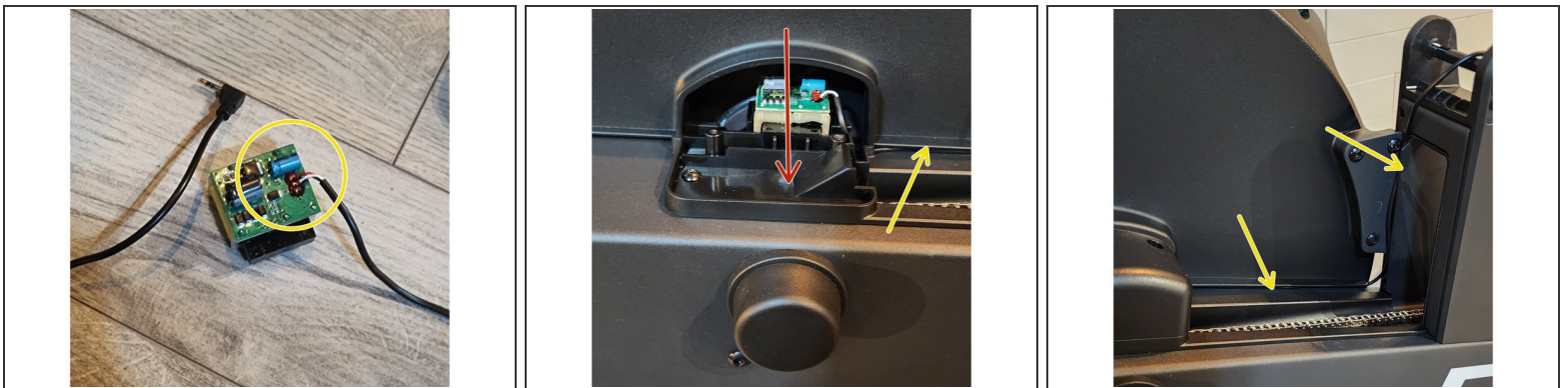
- Using the Phillips screwdriver, remove the two(2) screws from the generator cover.
- Remove the cover to expose the generator.

Step 5 — Remove the generator.



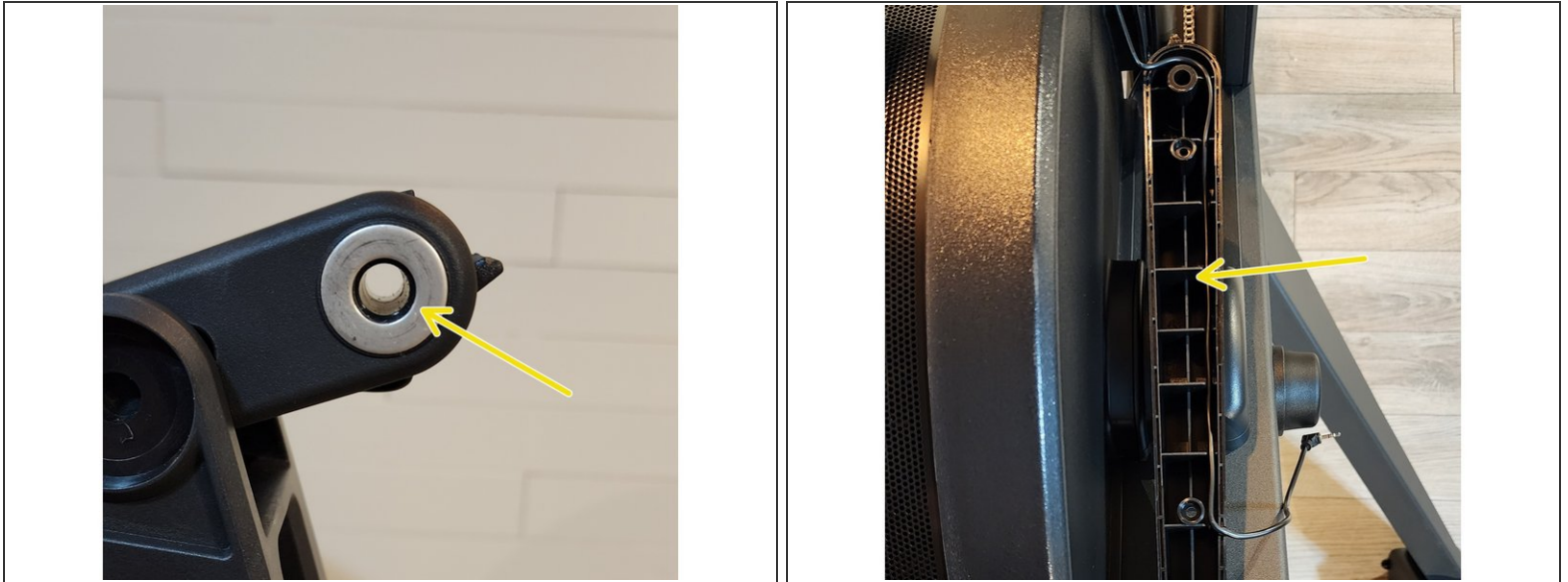
- Remove the wire from the grooves in the rower to give you enough slack to remove the generator.
- Slide the generator straight up out of its mount and pull it free of the rower.

Step 6 — Replace the generator.



- NOTE when handling the generator, be careful not to stress the solder joints where the wires connect to the circuit board.
- Install the generator by carefully inserting it into the holder molded into the rower.
- Carefully route the wire back through the grooves to the mast.

Step 7 — Reassembly notes.



- NOTE The washers go in the pivot of the mast during reassembly.
- NOTE Keep tension off the wire during reassembly.