



How to Replace Fan Housing

This guide illustrates how to remove and replace the fan housing of the Rogue Rower.





TOOLS:

- Philips Screwdriver (1)



PARTS:

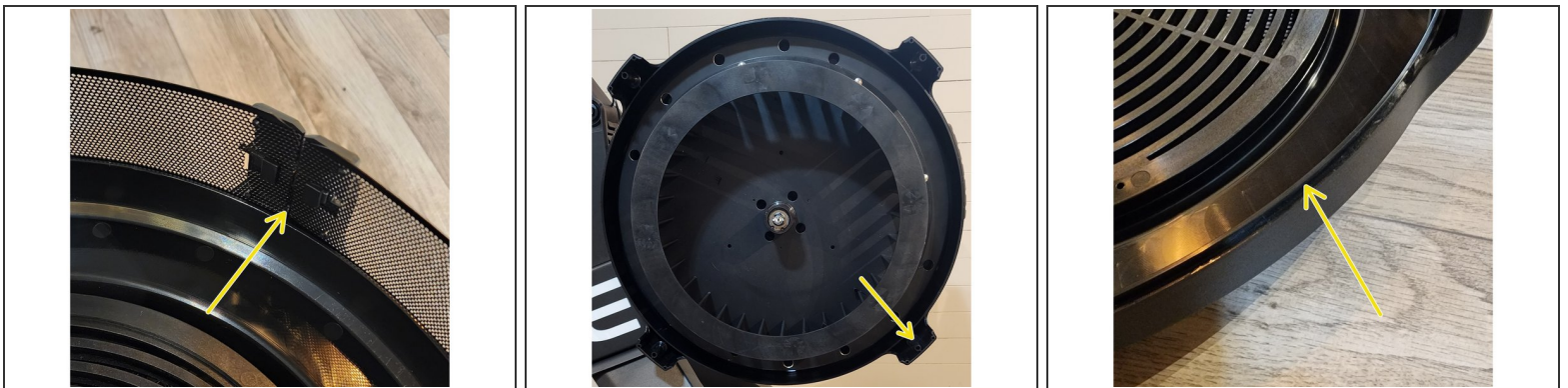
- Replacement Fan Housing (1)
-

Step 1 — Remove fan housing.



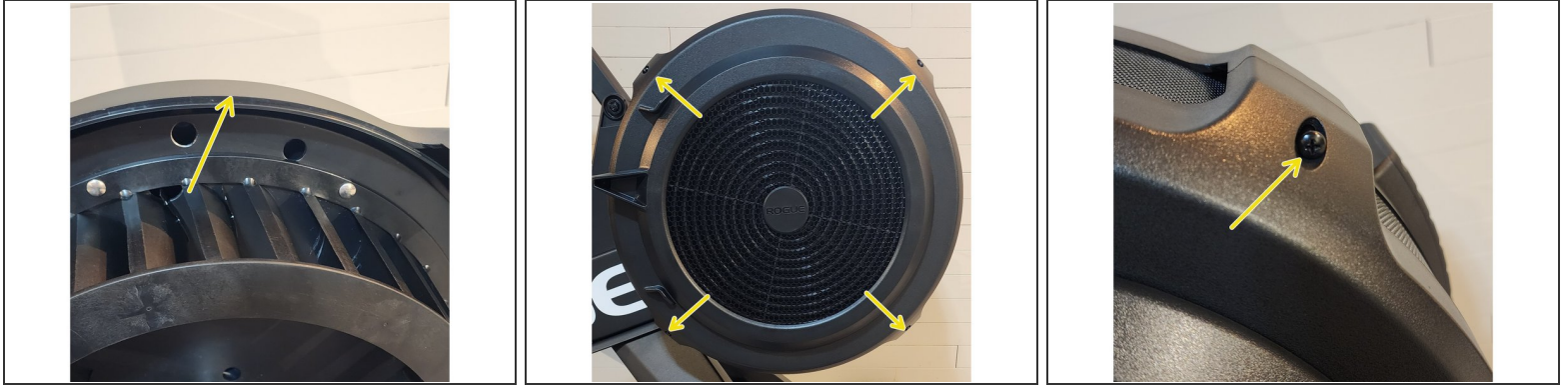
- Loosen the screw on the mesh ring a few turns.
- Keeping pressure on the face of the fan housing, use the Phillips screwdriver to remove the four screws.
- Remove the housing and the mesh ring.

Step 2 — Position the mesh ring.



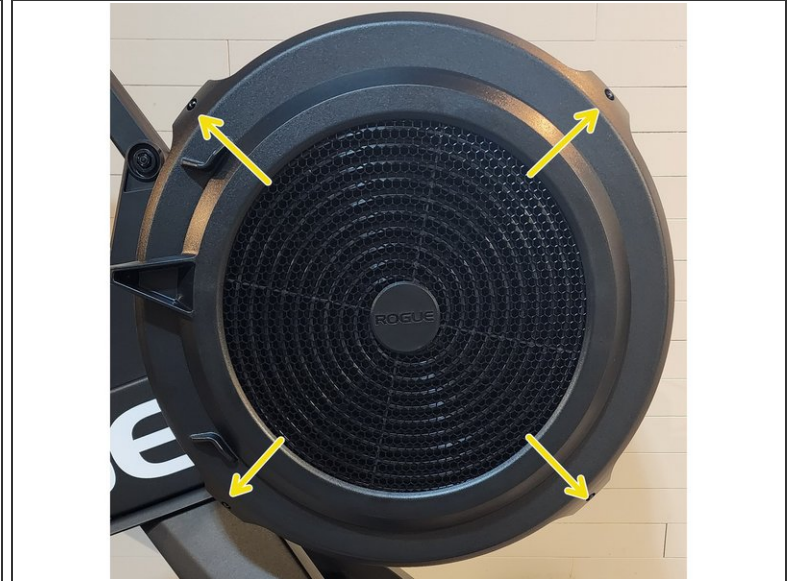
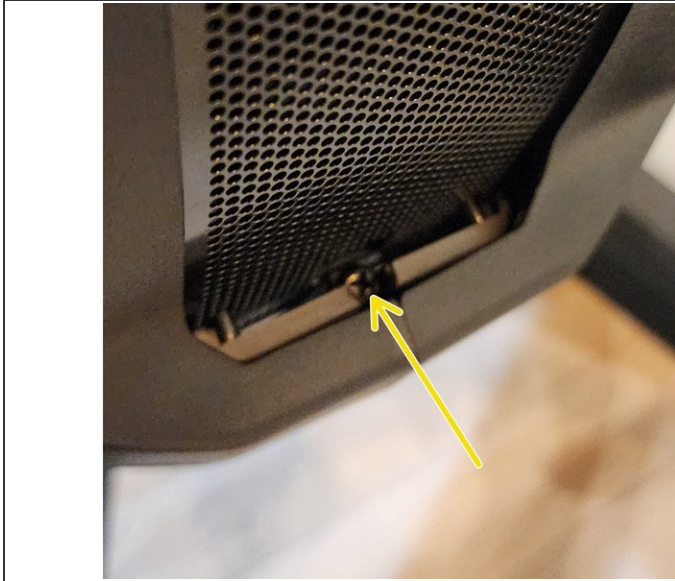
- On the replacement fan housing, line up the joint of the mesh ring with the corners of the housing and rower as shown in the first two pictures.
- NOTE make sure the mesh ring sits in the groove around the fan housing.

Step 3 — Replace the housing.



- NOTE make sure the mesh ring sits in the groove on the rower side of the housing.
- Line up the four corners of the fan housing with the rower side of the housing and press the replacement housing into place.
- Keeping pressure on the face of the housing, start the four screws by hand.

Step 4 — Tighten the screws.



- With pressure still on the face of the fan housing, tighten the mesh ring screw until it is snug.
- While continuing to maintain pressure on the face of the fan housing, use the Phillips screwdriver to tighten the four screws.
- NOTE do not over tighten the screws.