

ROGUE®

ECHO ROWER

HOW TO REPLACE ROWER FAN



IMPORTANT SAFETY INFORMATION

DISCLAIMER:

Resistance training, gymnastics training, and activities at height are potentially dangerous and may lead to severe injury or even death. Use common sense when training, obtain instruction in the proper execution of movements, and understand your limitations. This equipment must only be used by competent and responsible persons. Obtaining instruction in appropriate techniques and methods of use is your own responsibility. You assume all risks and responsibilities for all damage, injury or death which may occur during or following incorrect use of this equipment in any matter whatsoever. Rogue Fitness bears no liability beyond the replacement value of the equipment in question.

WARNING:

MISUSE OF THIS PRODUCT CAN RESULT IN SEVERE INJURY.

Both Rogue Fitness and buyer disclaim any express or implied warranty, including, without limitation, warranties or merchantability and/or fitness for a particular purpose with respect to the equipment. Buyer assumes all liability to use of equipment.

STEP 1 - REMOVE FAN HOUSING

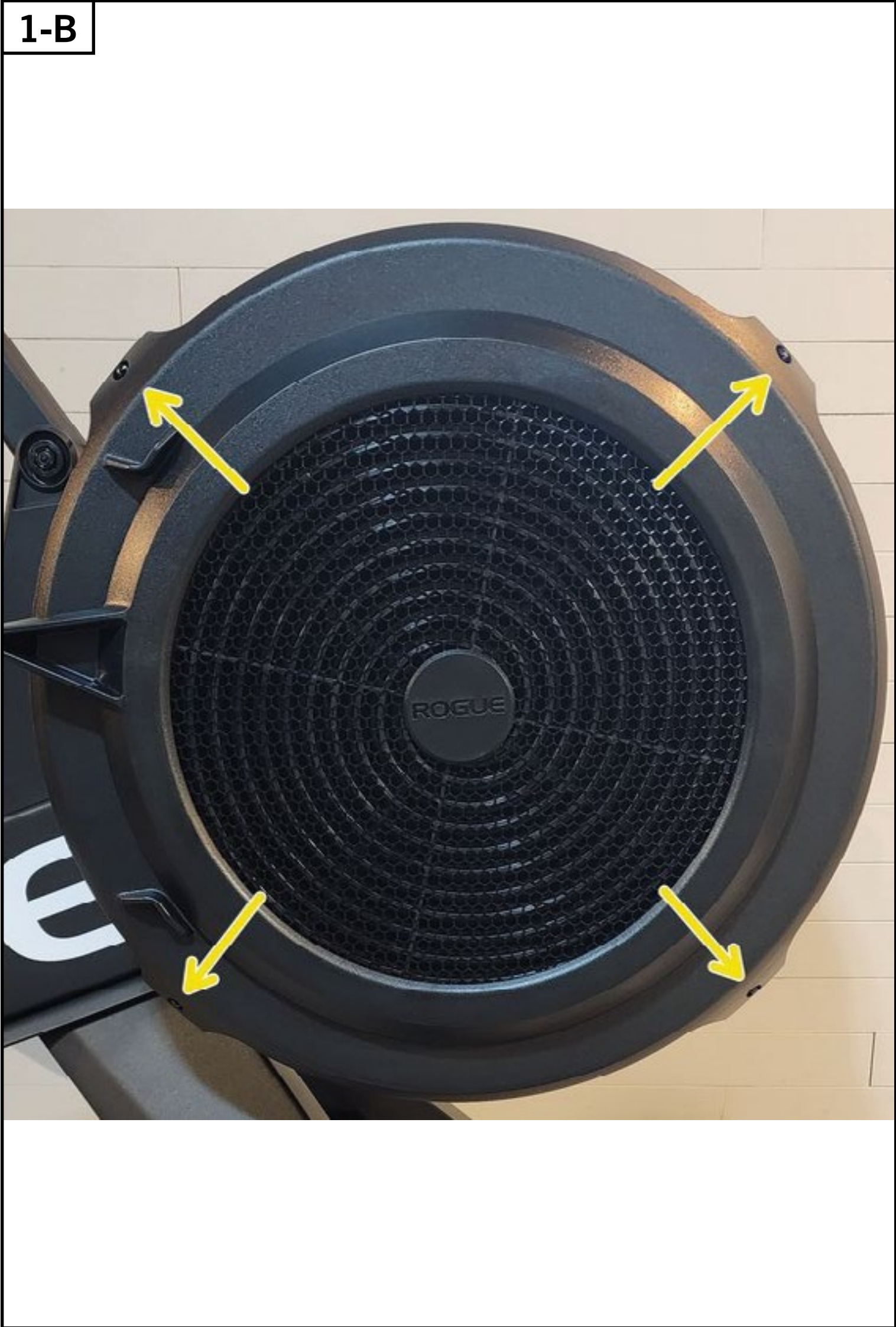
Tools Required:

- Philips Screwdriver
- 14mm Wrench

Parts Required:

- Replacement Fan

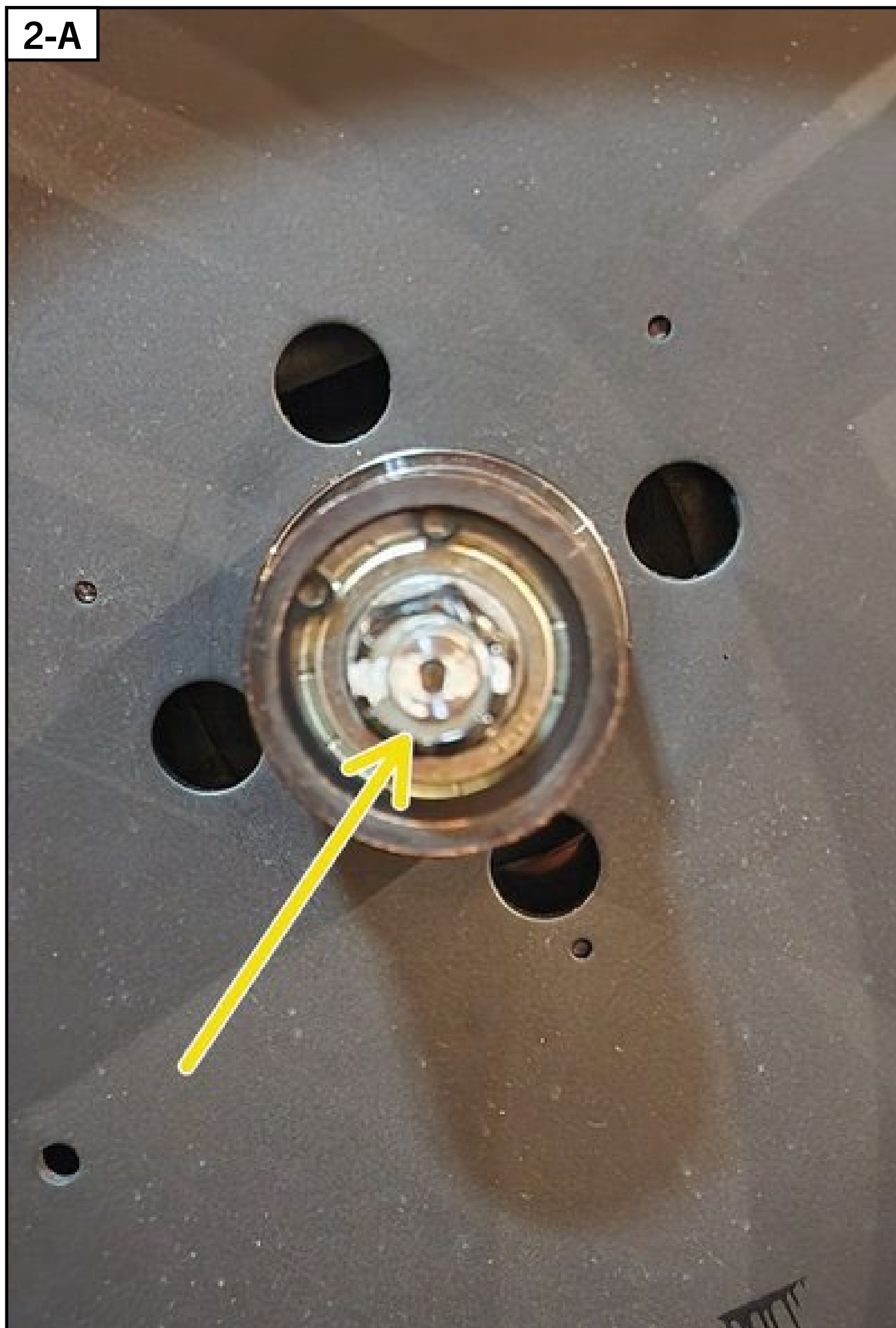
- Loosen the screw on the mesh ring a few turns.
- Keeping pressure on the face of the fan housing, use the Phillips screwdriver to remove the four screws.
- Remove the housing and the mesh ring.



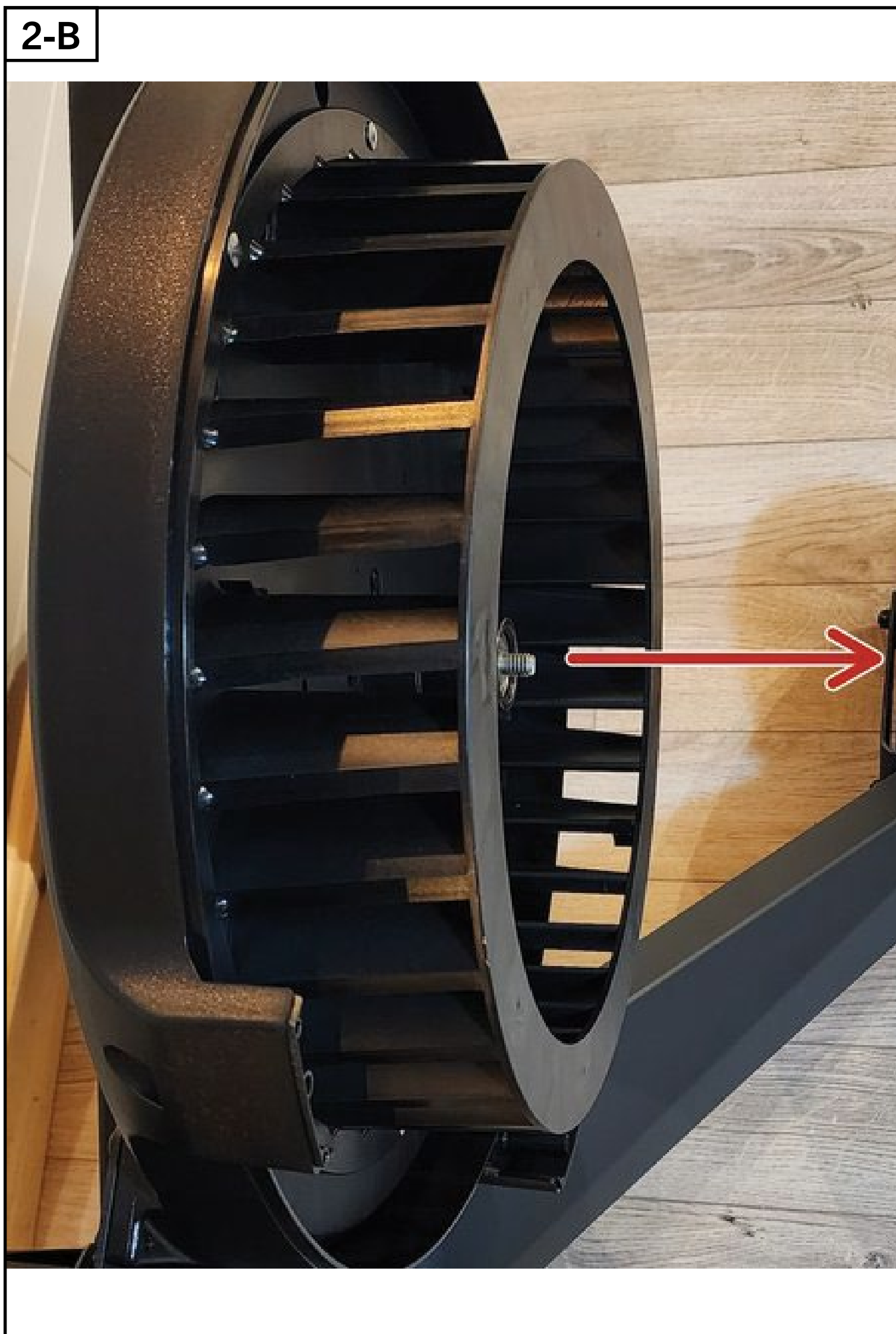
STEP 2 - REMOVE FAN

- Using the 14mm wrench, remove the nut from the fan axle.
- NOTE: The witness mark painted in white across the nut and axle to maintain the nut's position.
- Carefully pull the fan straight away from the rower.
- Place the fan on its face to protect the delicate magnetic ring on the rear of the fan.

2-A



2-B



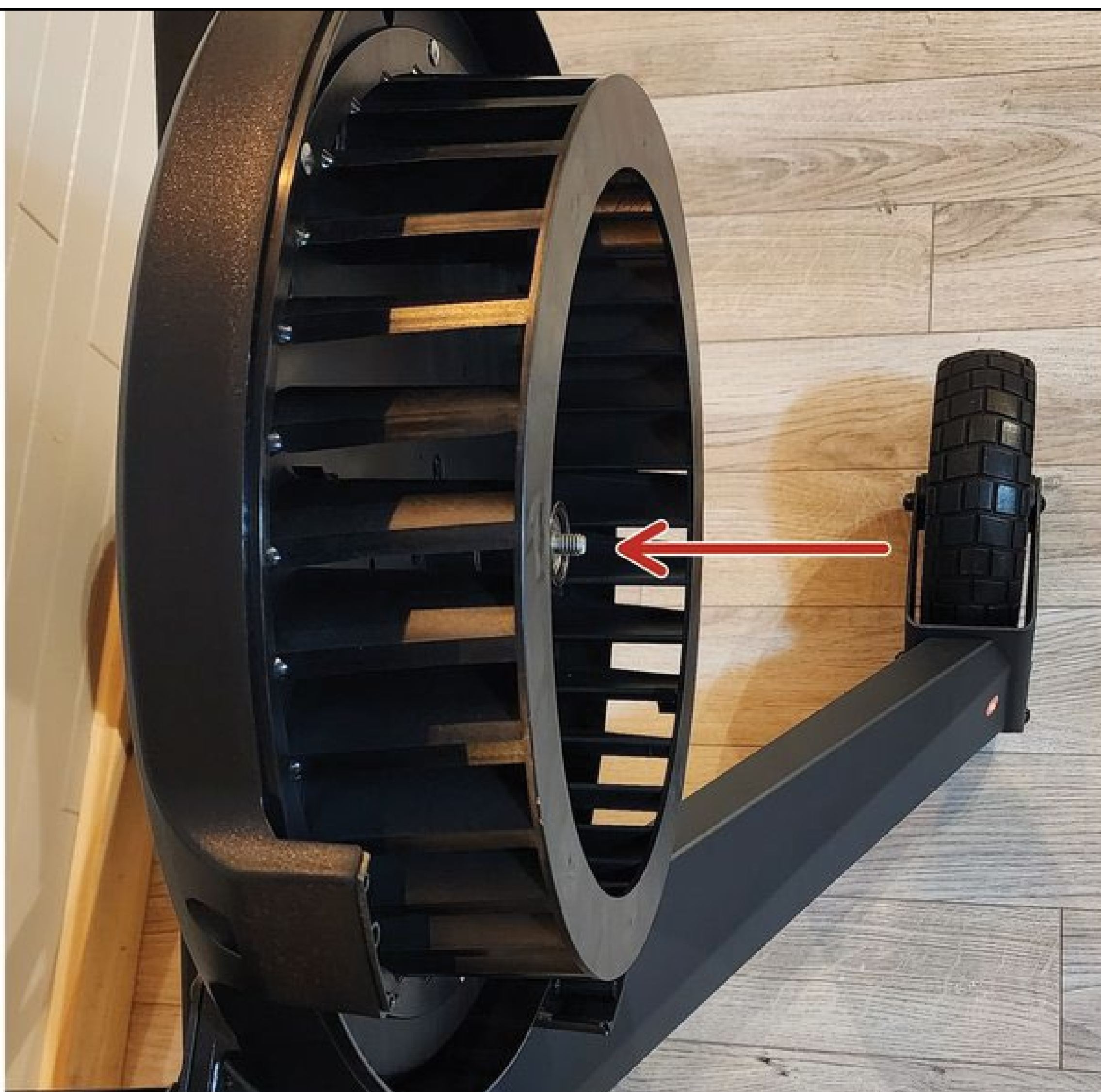
2-C



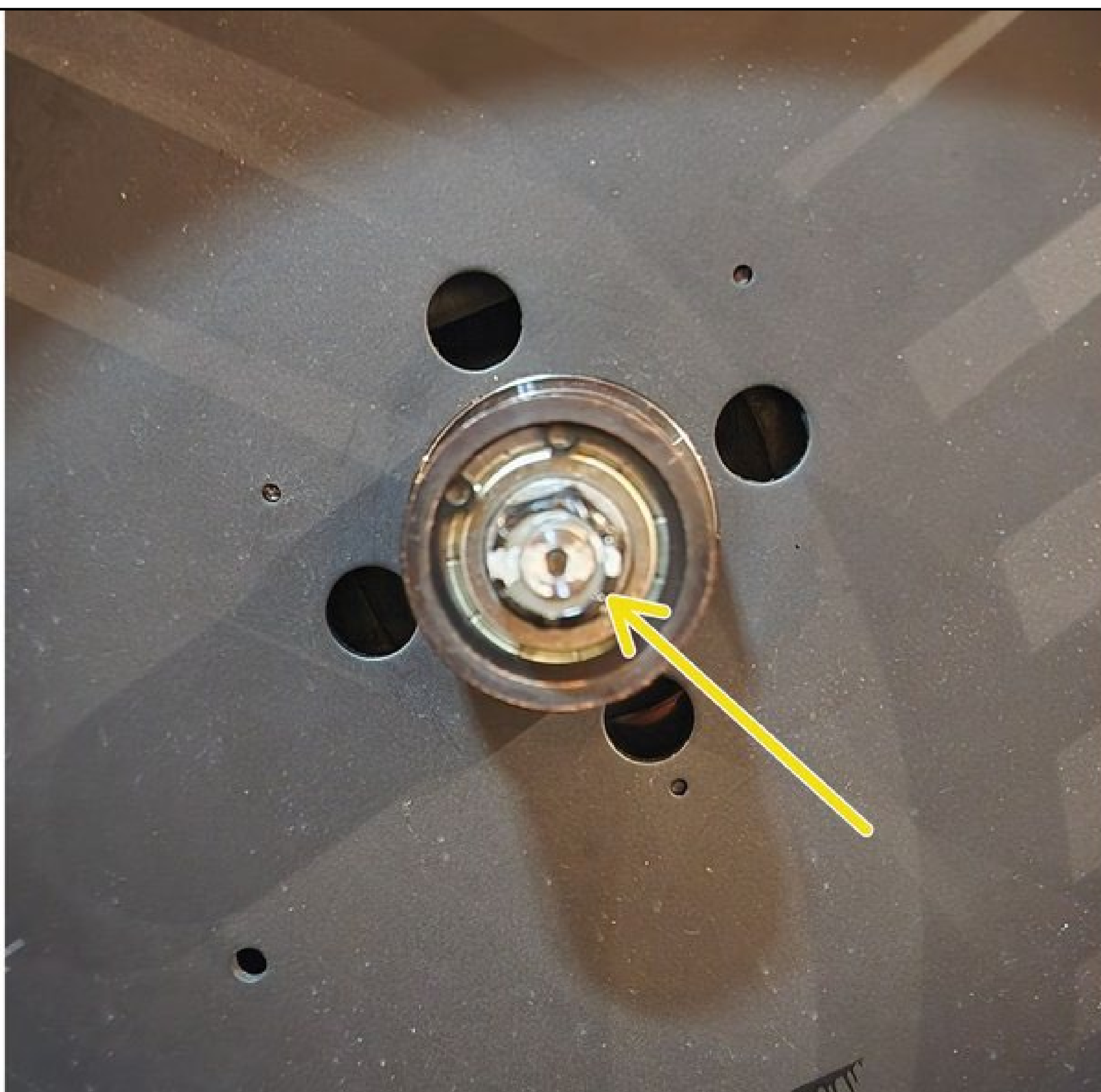
STEP 3 - REPLACE THE FAN

- Carefully slide the replacement fan onto the axle.
- Using the 14mm wrench, tighten the nut back onto the axle.
- NOTE: When the nut tightens against the face of the axle bearing, make sure the witness marks line back up.

3-A



3-B



STEP 4 - POSITION THE MESH RING

- On the replacement fan housing, line up the joint of the mesh ring with the corners of the housing and rower as shown in the first two pictures.
- NOTE: Make sure the mesh ring sits in the groove around the fan housing.



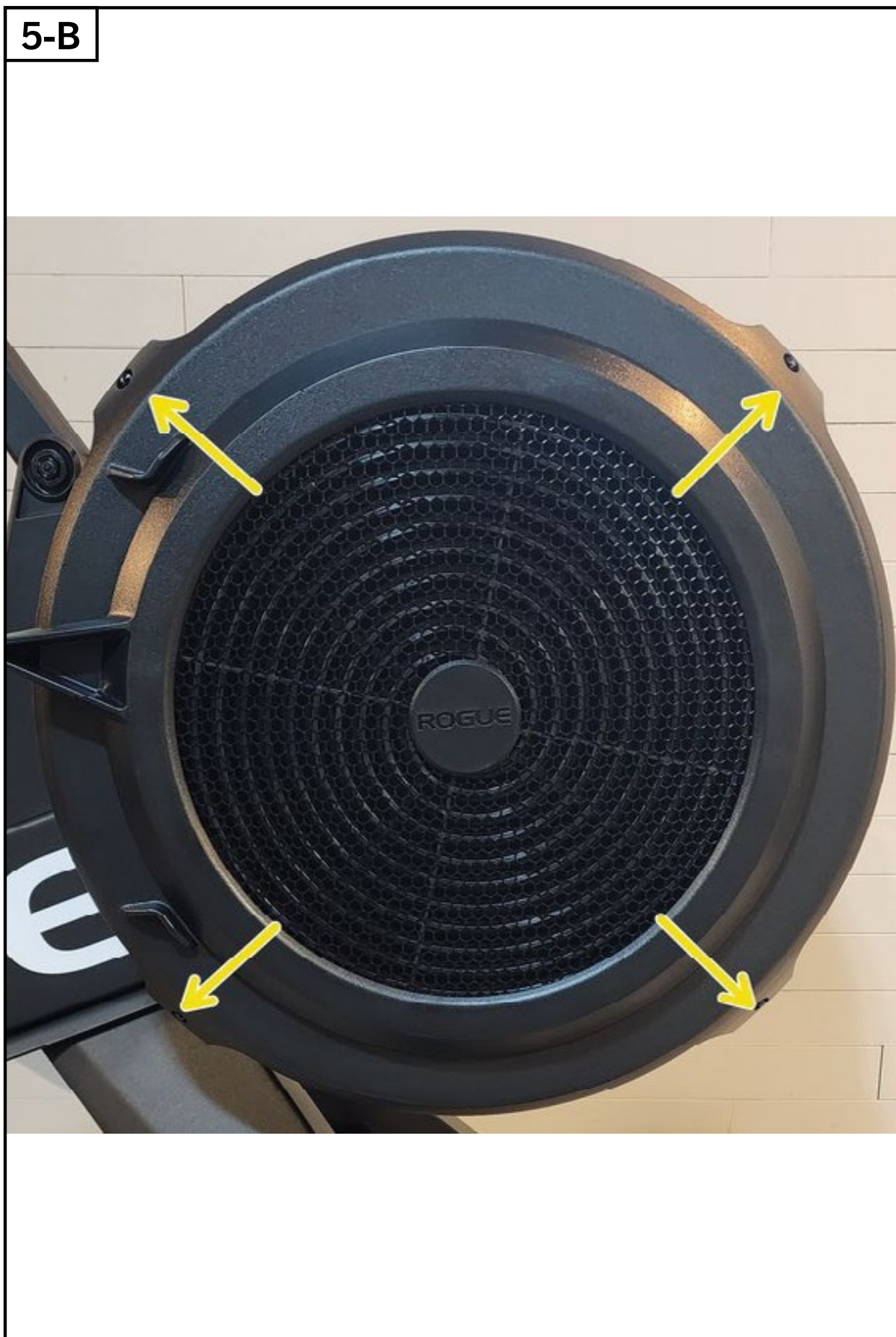
STEP 5 - REPLACE THE HOUSING

- NOTE: Make sure the mesh ring sits in the groove on the rower side of the housing.
- Line up the four corners of the fan housing with the rower side of the housing and press the replacement housing into place.
- Keeping pressure on the face of the housing, start the four screws by hand.

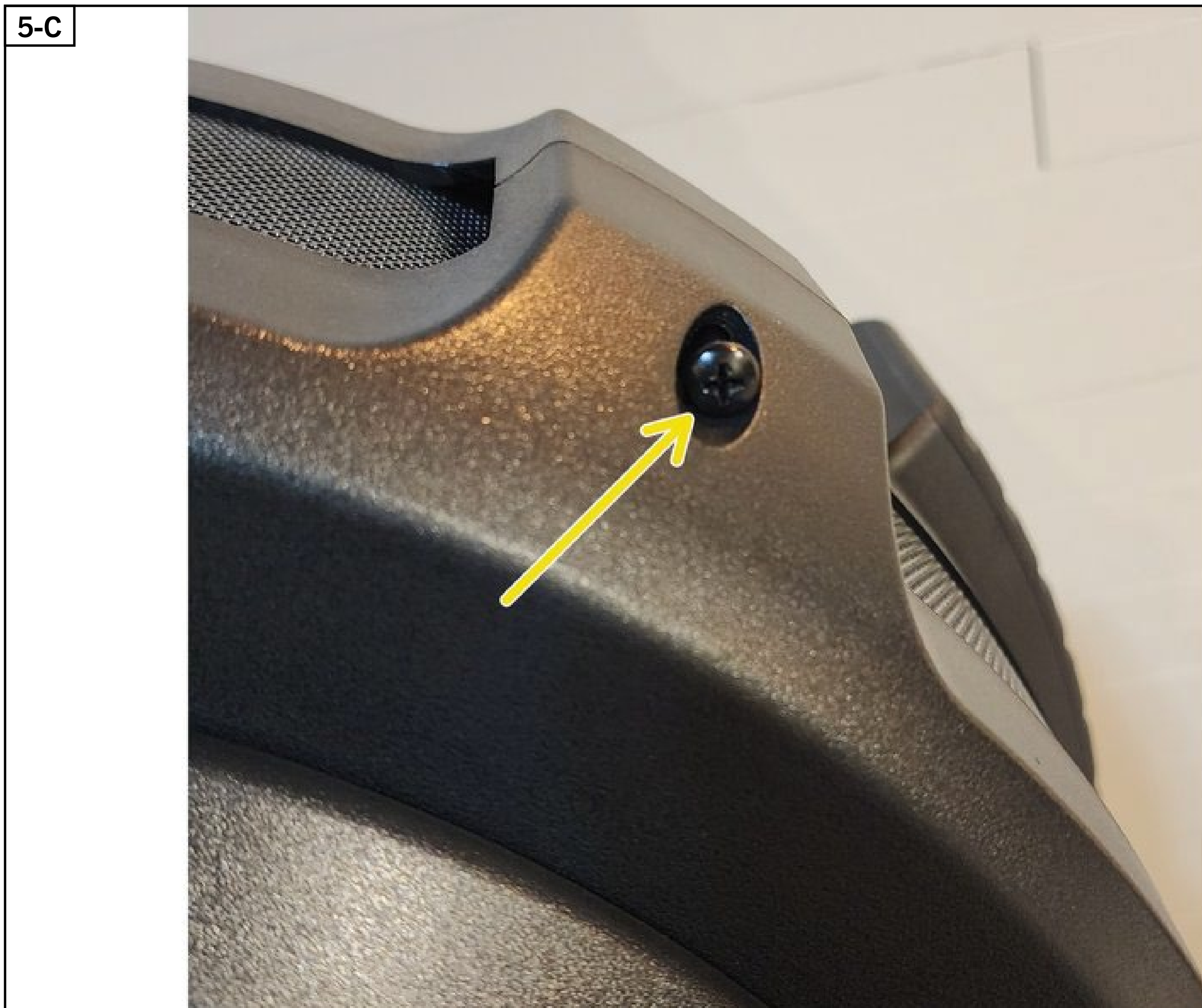
5-A



5-B



5-C



STEP 6 - TIGHTEN THE SCREWS

- With pressure still on the face of the fan housing, tighten the mesh ring screw until it is snug.
- While continuing to maintain pressure on the face of the fan housing, use the Phillips screwdriver to tighten the four screws.
- NOTE: Do not over tighten the screws.

