

ROGUE®

ECHO ROWER

HOW TO REPLACE THE GENERATOR



IMPORTANT SAFETY INFORMATION

DISCLAIMER:

Resistance training, gymnastics training, and activities at height are potentially dangerous and may lead to severe injury or even death. Use common sense when training, obtain instruction in the proper execution of movements, and understand your limitations. This equipment must only be used by competent and responsible persons. Obtaining instruction in appropriate techniques and methods of use is your own responsibility. You assume all risks and responsibilities for all damage, injury or death which may occur during or following incorrect use of this equipment in any matter whatsoever. Rogue Fitness bears no liability beyond the replacement value of the equipment in question.

WARNING:

MISUSE OF THIS PRODUCT CAN RESULT IN SEVERE INJURY.

Both Rogue Fitness and buyer disclaim any express or implied warranty, including, without limitation, warranties or merchantability and/or fitness for a particular purpose with respect to the equipment. Buyer assumes all liability to use of equipment.

STEP 1 - REMOVE THE CONSOLE

Tools Required:

- Philips Screwdriver
- T27 Wrench

Parts Required:

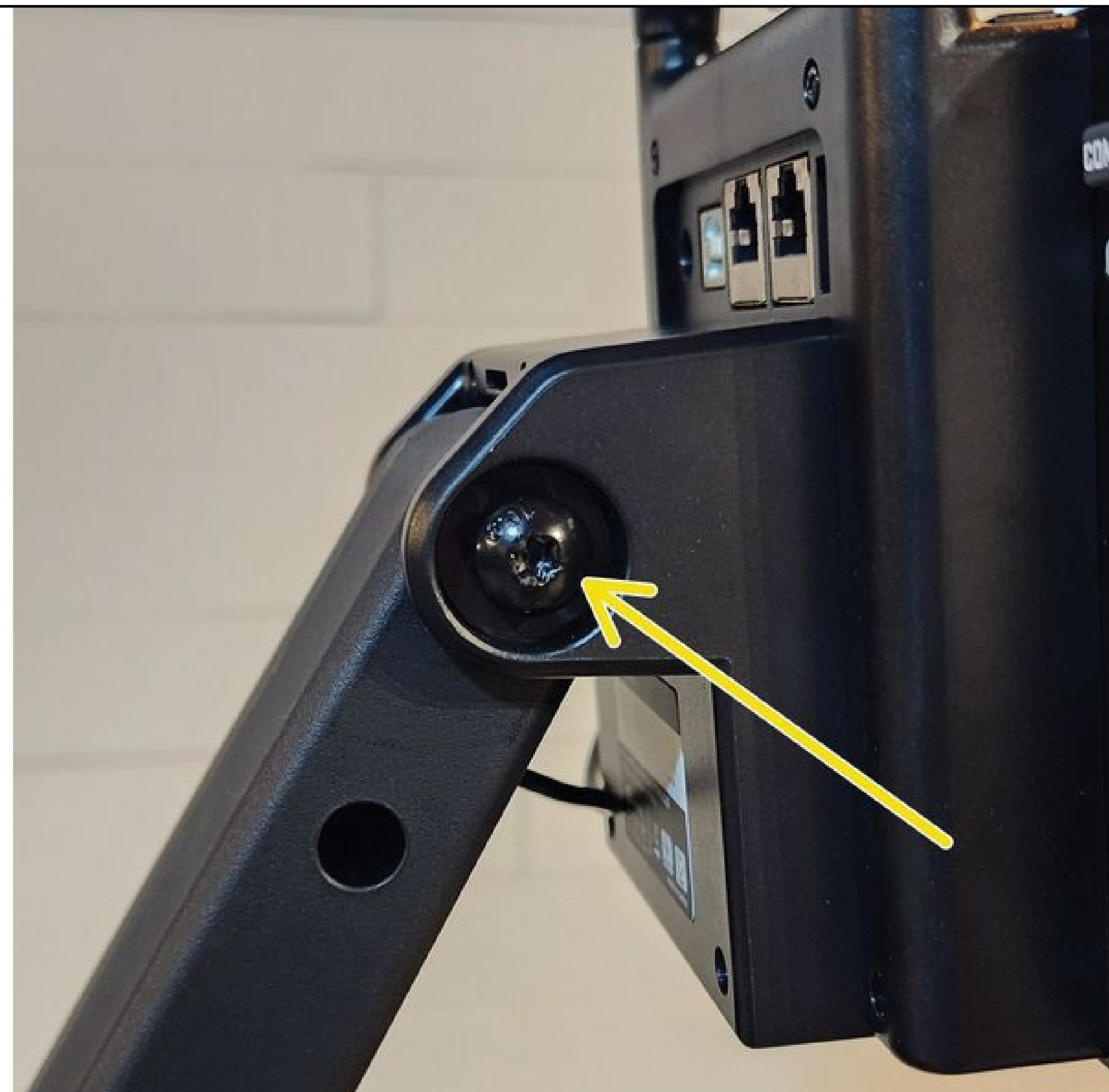
- Replacement Generator

- **CAUTION!** The data cable for the console is routed through the mast. Be careful to keep tension off the wire during this procedure.
- Unplug the console.
- Using the T27 wrench, remove the bolt holding the console to the mast.

1-A



1-B



STEP 2 - REMOVE THE MAST

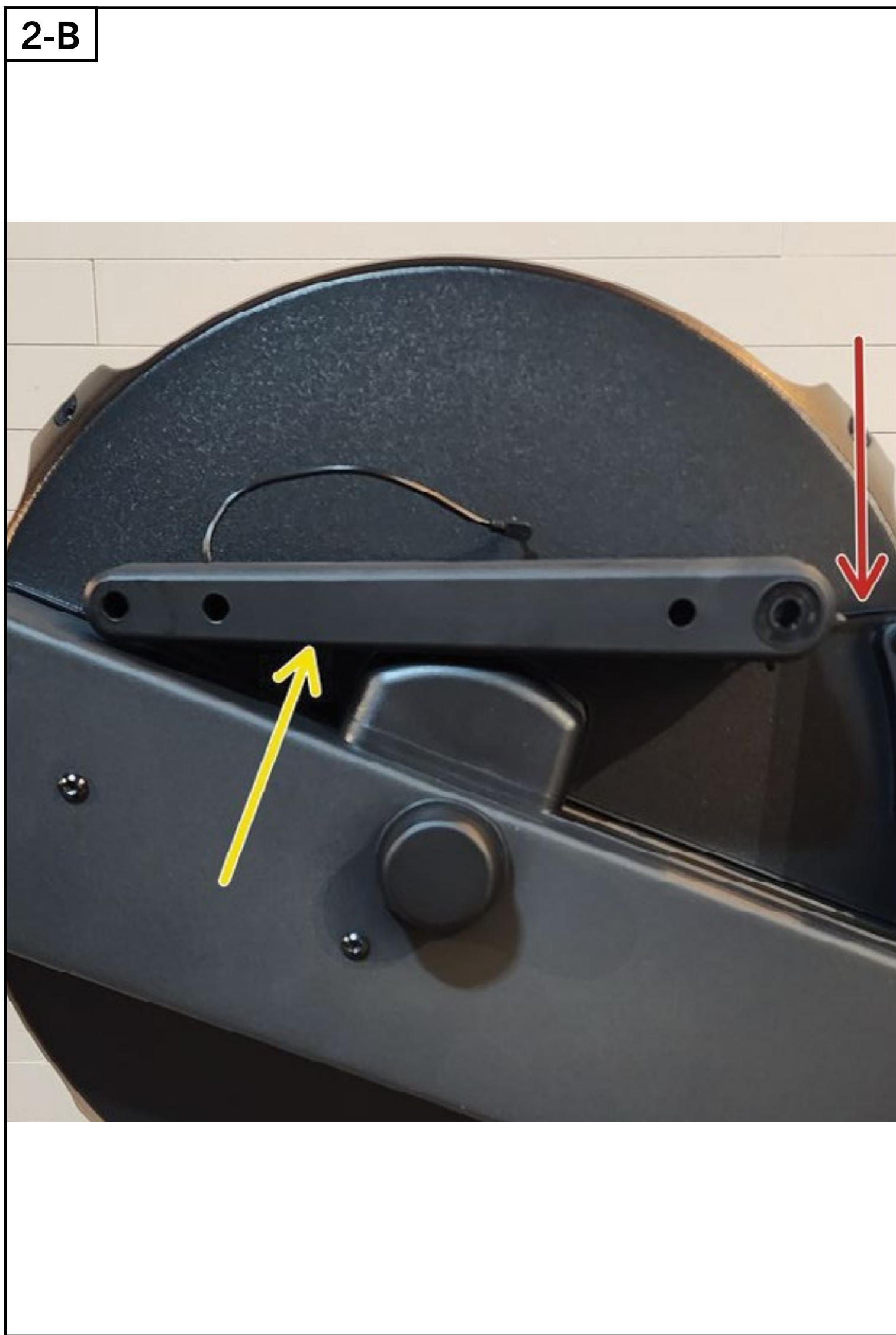
- Using the T27 wrench, remove the bolt holding the mast to the rower.
- Rest the mast on the hub cover.
- NOTE: The wire is still attached to the rower.

- NOTE: There are washers between the console and mast. Save them for reassembly.

2-A



2-B

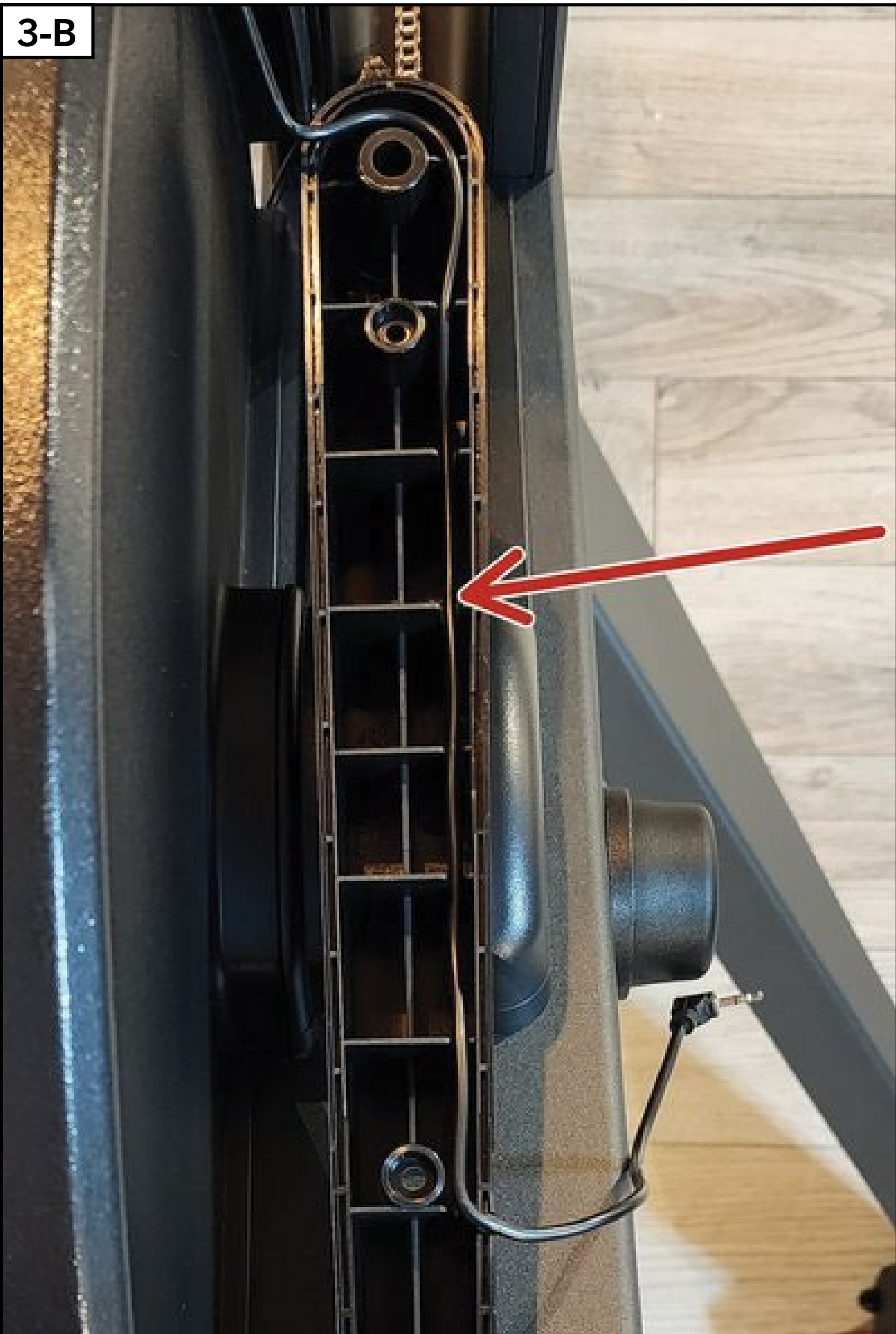
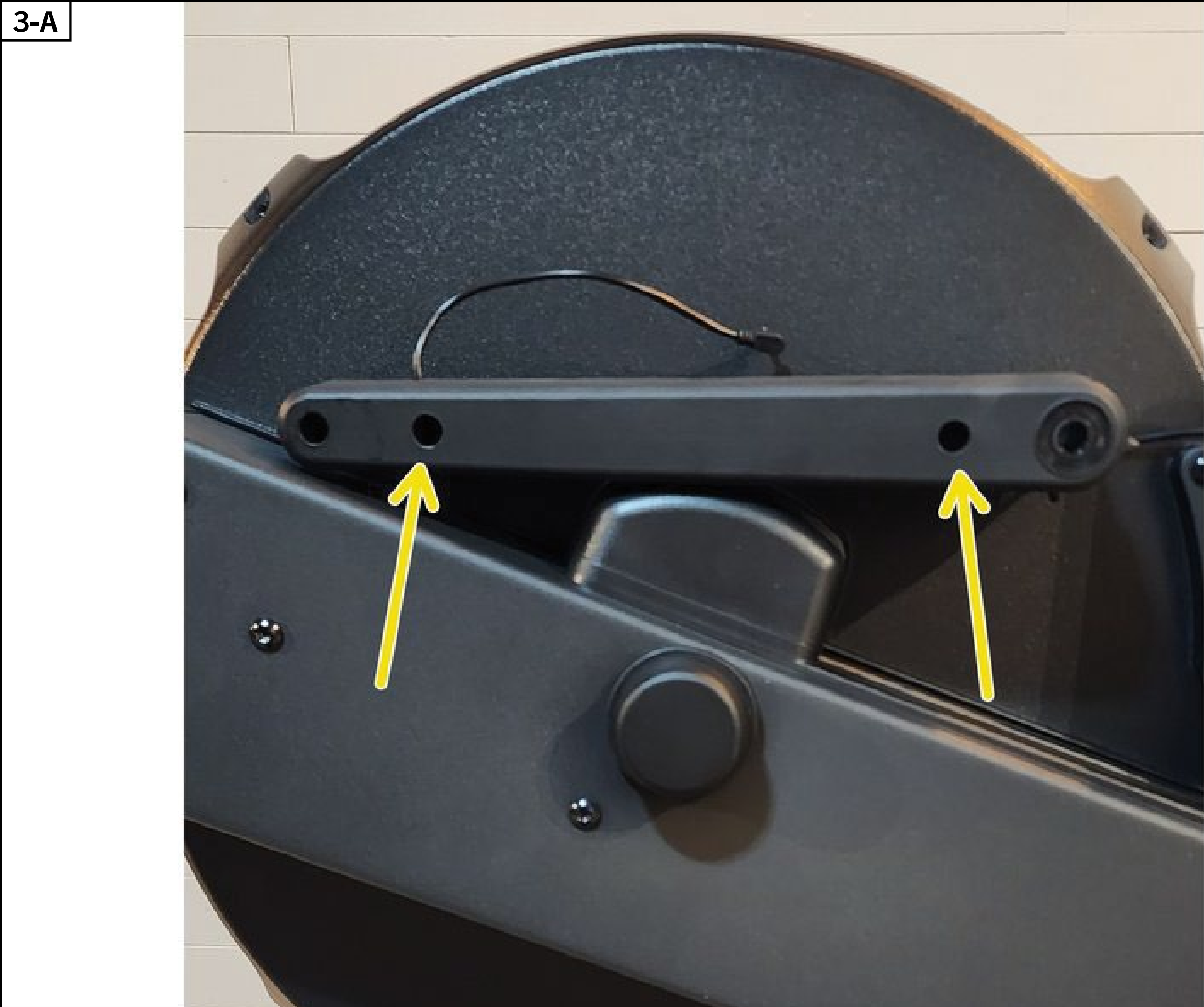


2-C



STEP 3 - DISASSEMBLE THE MAST

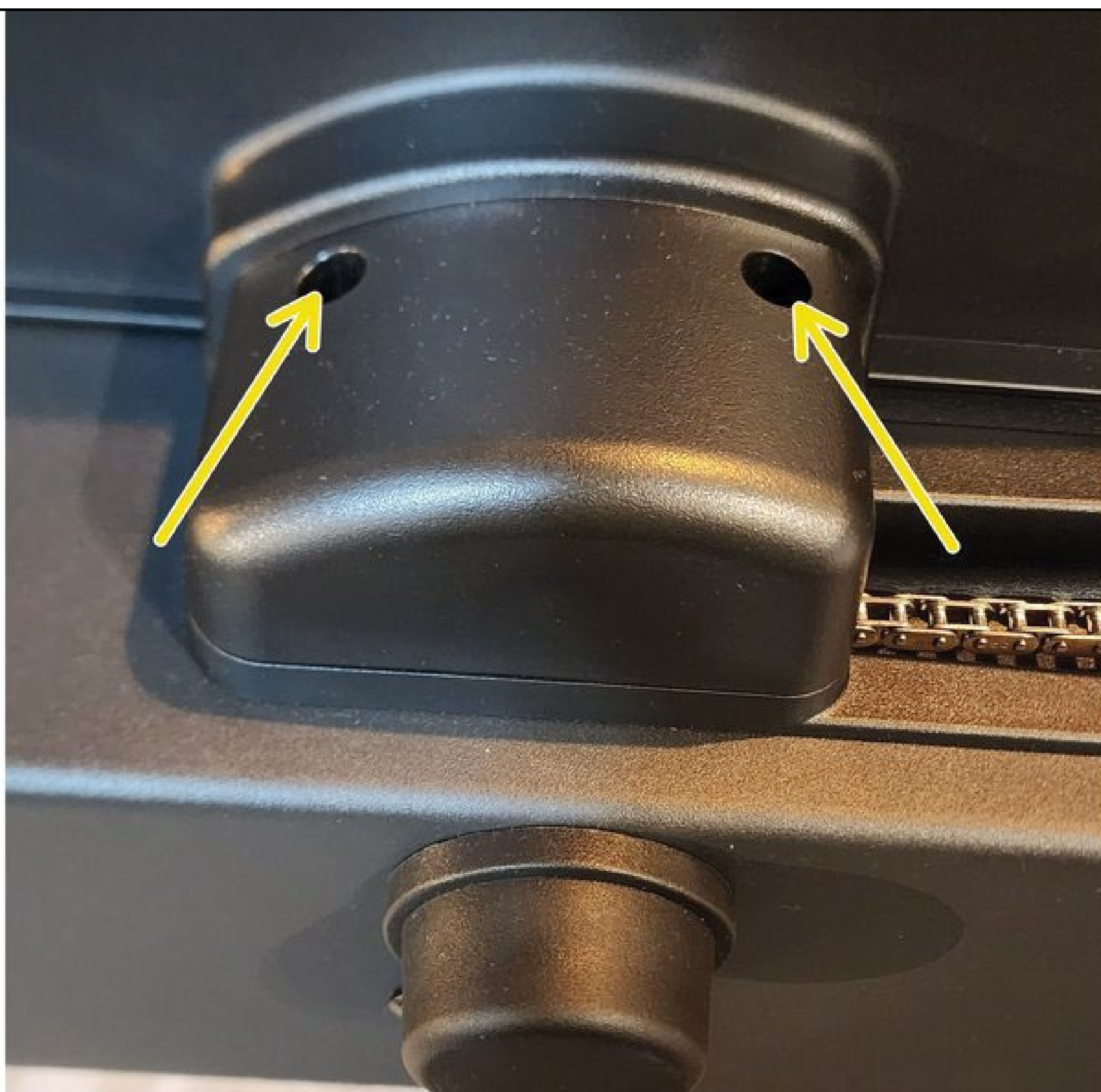
- Using the Phillips screwdriver, remove the screws holding the two halves of the mast together.
- NOTE: The path the wire takes inside the mast for reassembly.
- Pull the wire free and set the disassembled mast aside.
- Note how the wire is routed through the grooves to the generator.



STEP 4 - REMOVE THE GENERATOR COVER

- Using the Phillips screwdriver, remove the two screws from the generator cover.
- Remove the cover to expose the generator.

4-A



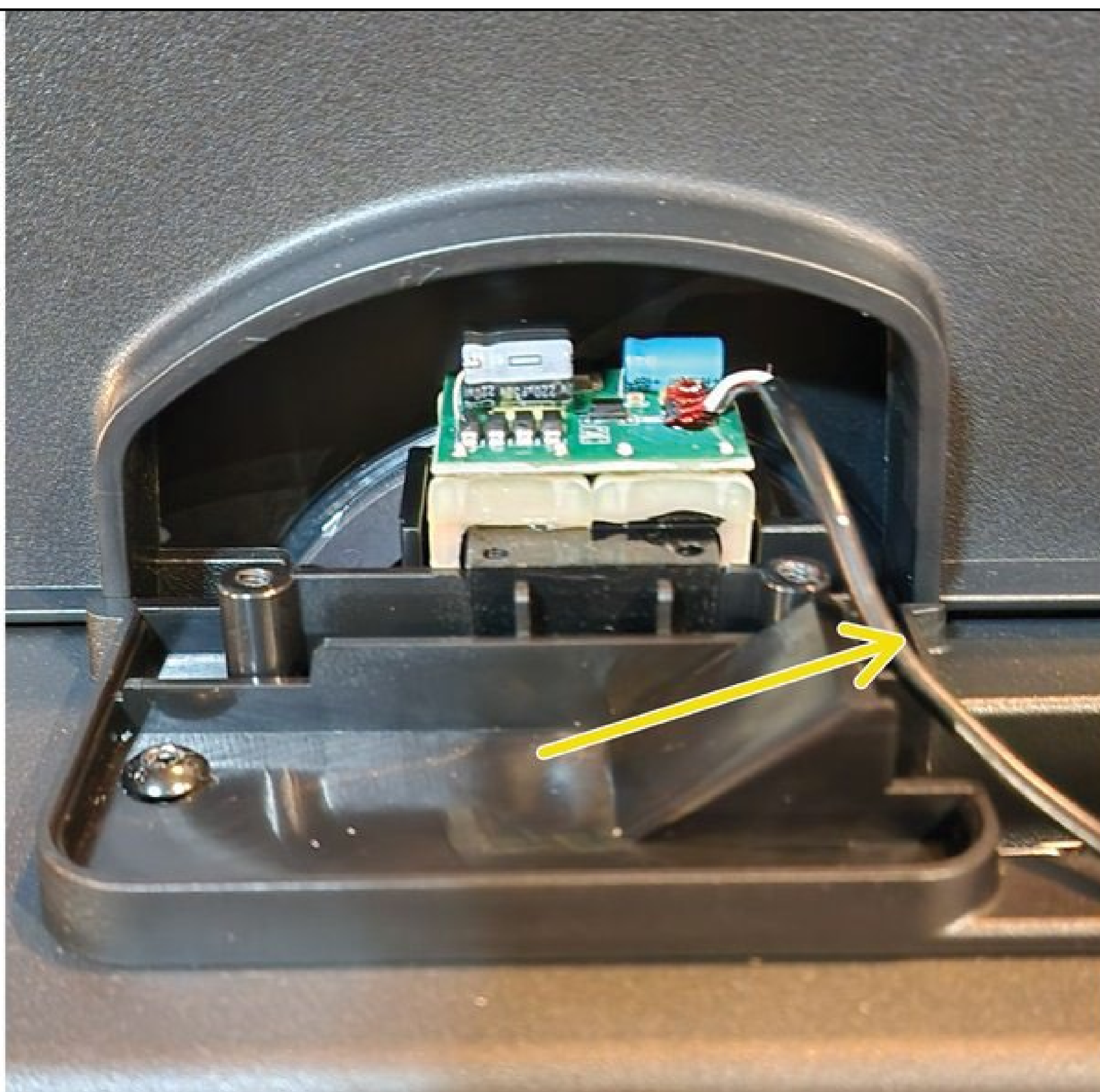
4-B



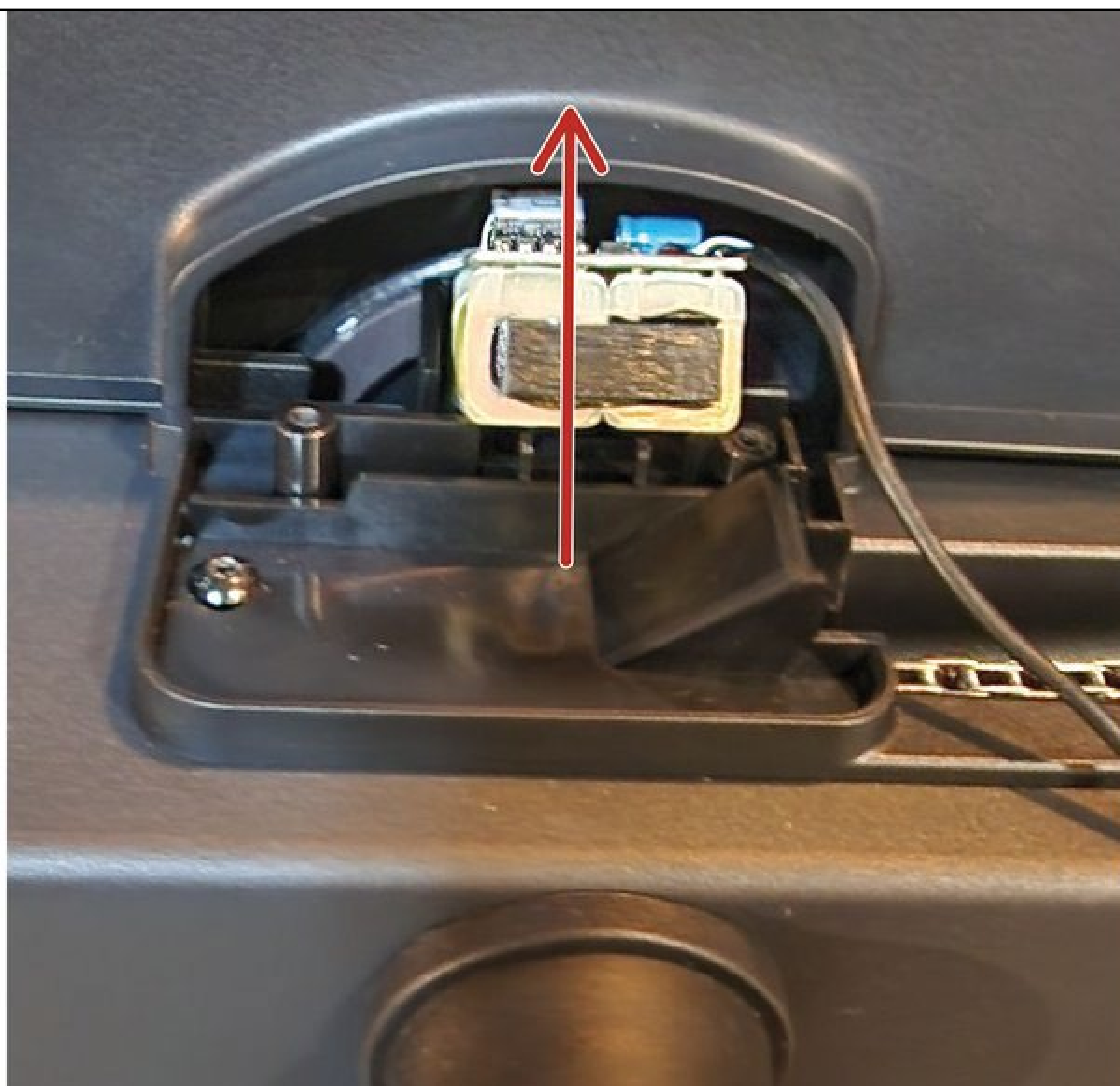
STEP 5 - REMOVE THE GENERATOR

- Remove the wire from the grooves in the rower to give you enough slack to remove the generator.
- Slide the generator straight up out of its mount and pull it free of the rower.

5-A



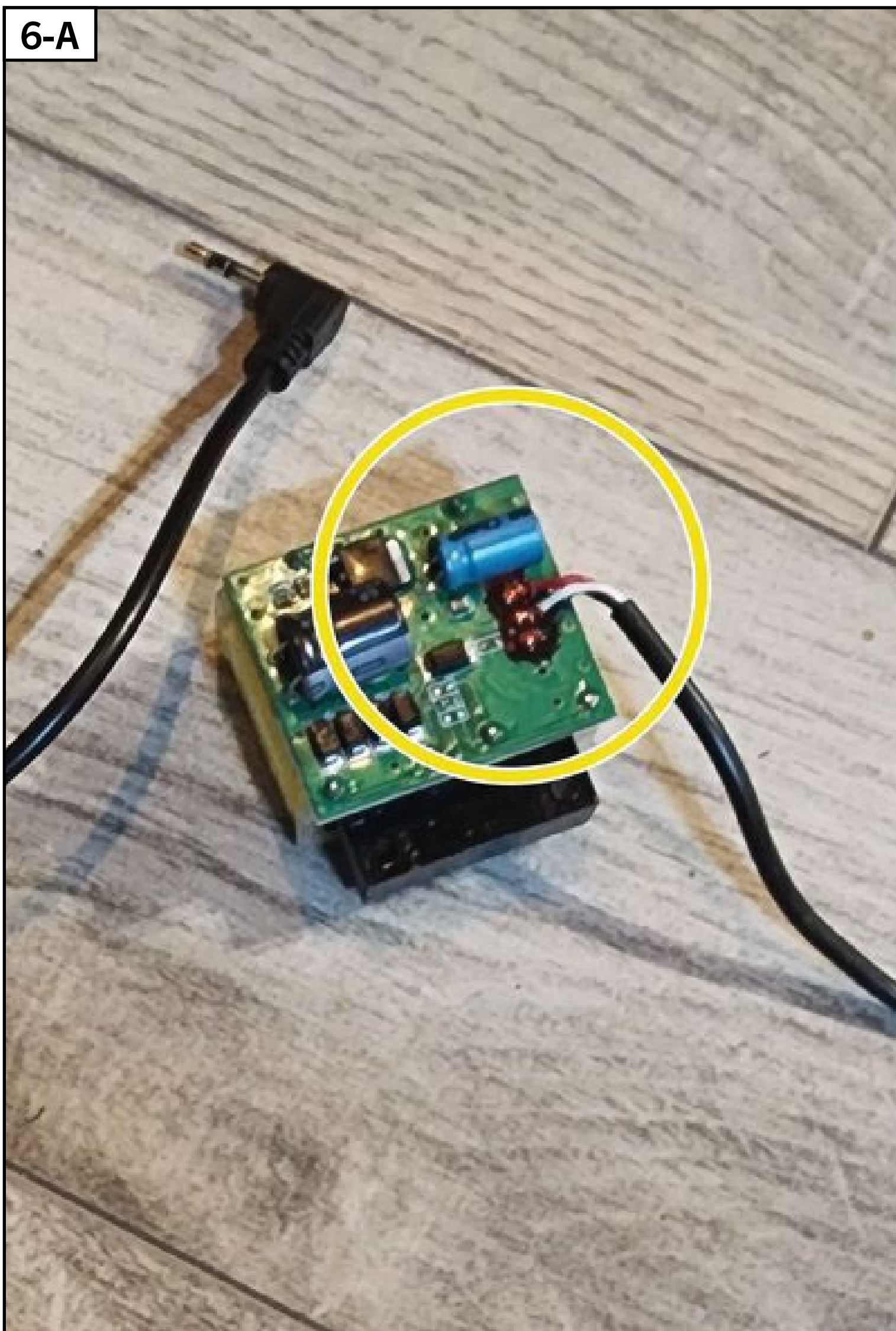
5-B



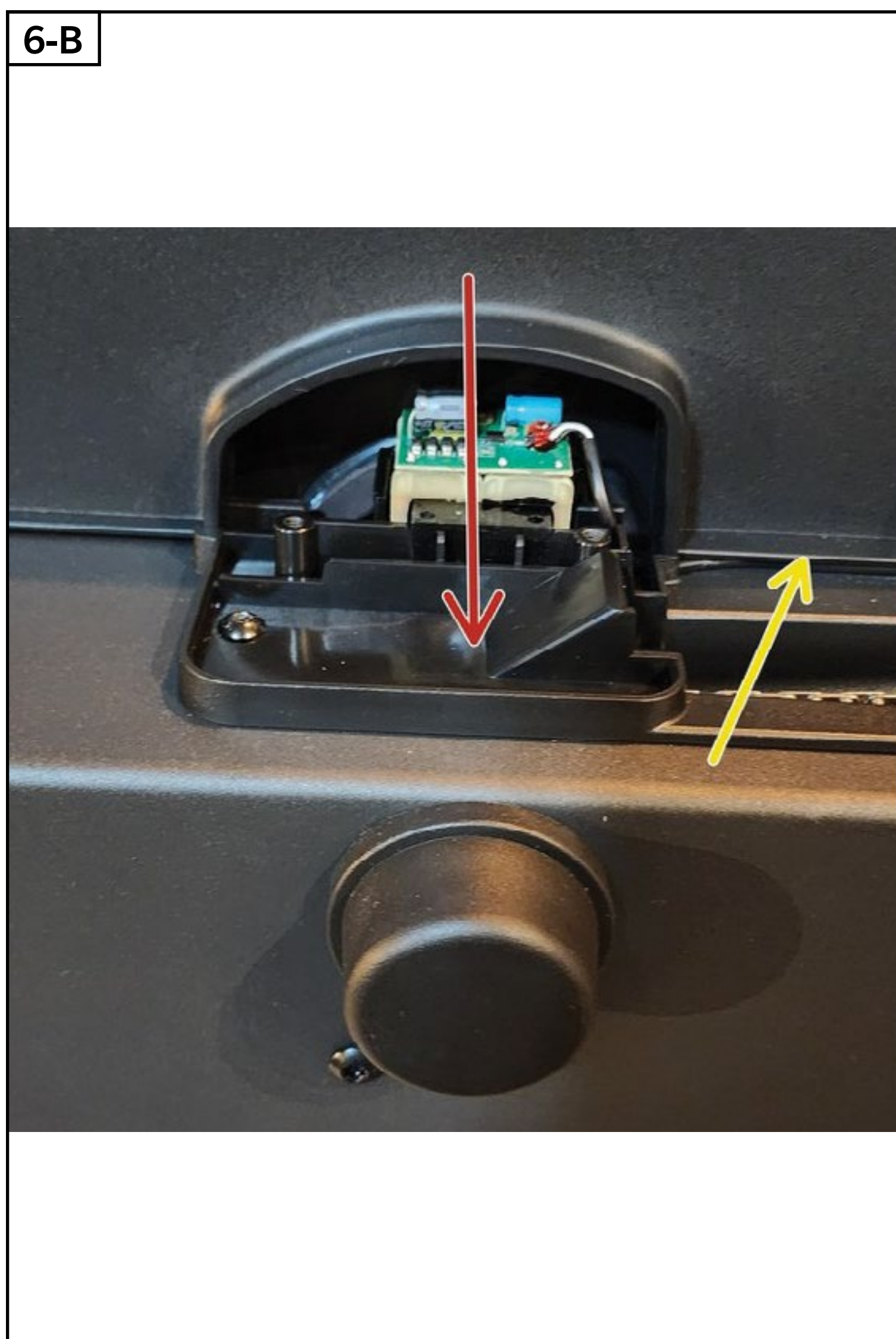
STEP 6 - REPLACE THE GENERATOR

- NOTE: When handling the generator, be careful not to stress the solder joints where the wires connect to the circuit board.
- Install the generator by carefully inserting it into the holder molded into the rower.
- Carefully route the wire back through the grooves to the mast.

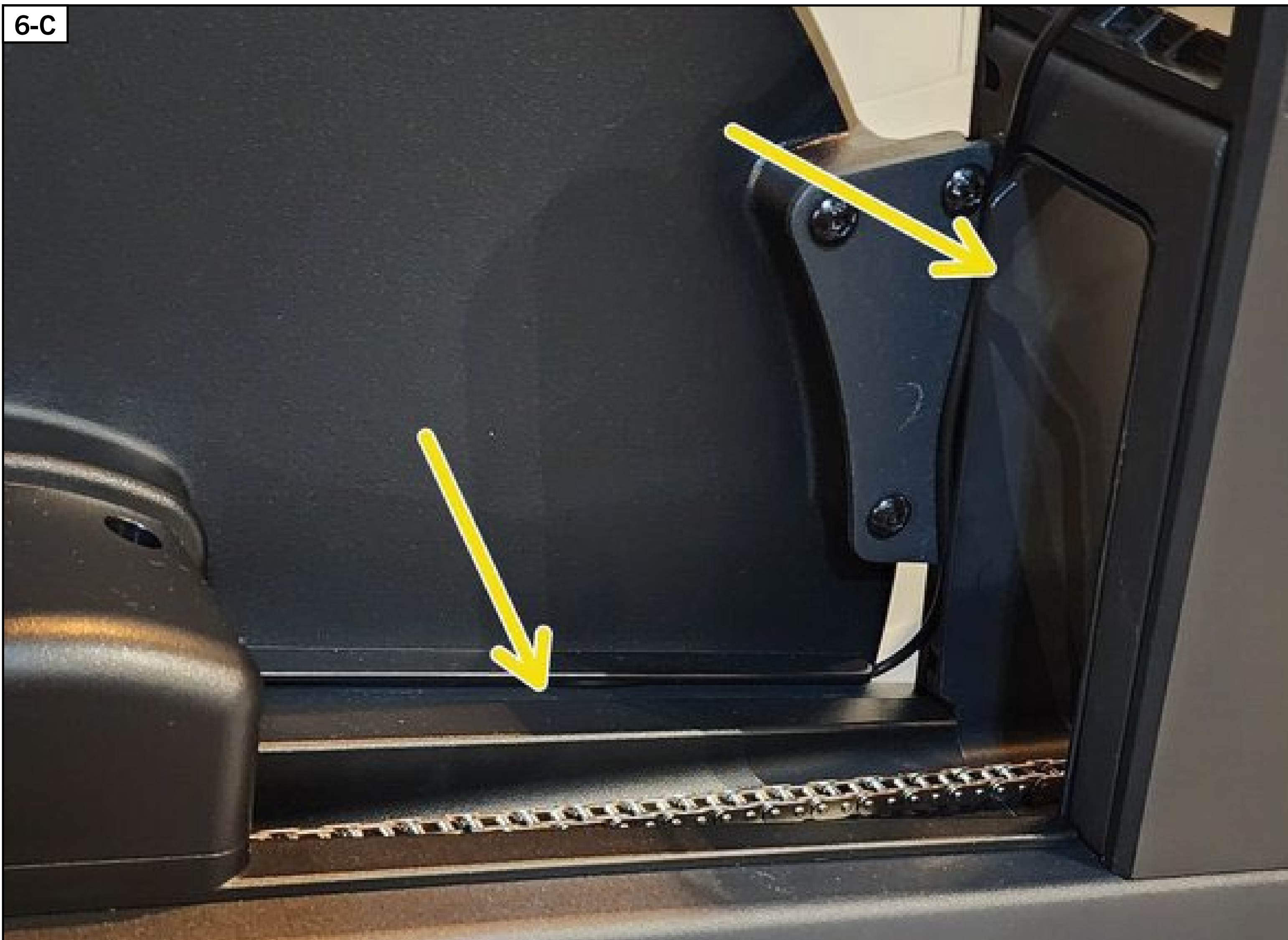
6-A



6-B



6-C



STEP 7 - REASSEMBLY NOTES

- The washers go in the pivot of the mast during reassembly.
- Keep tension off the wire during reassembly.

7-A



7-B

