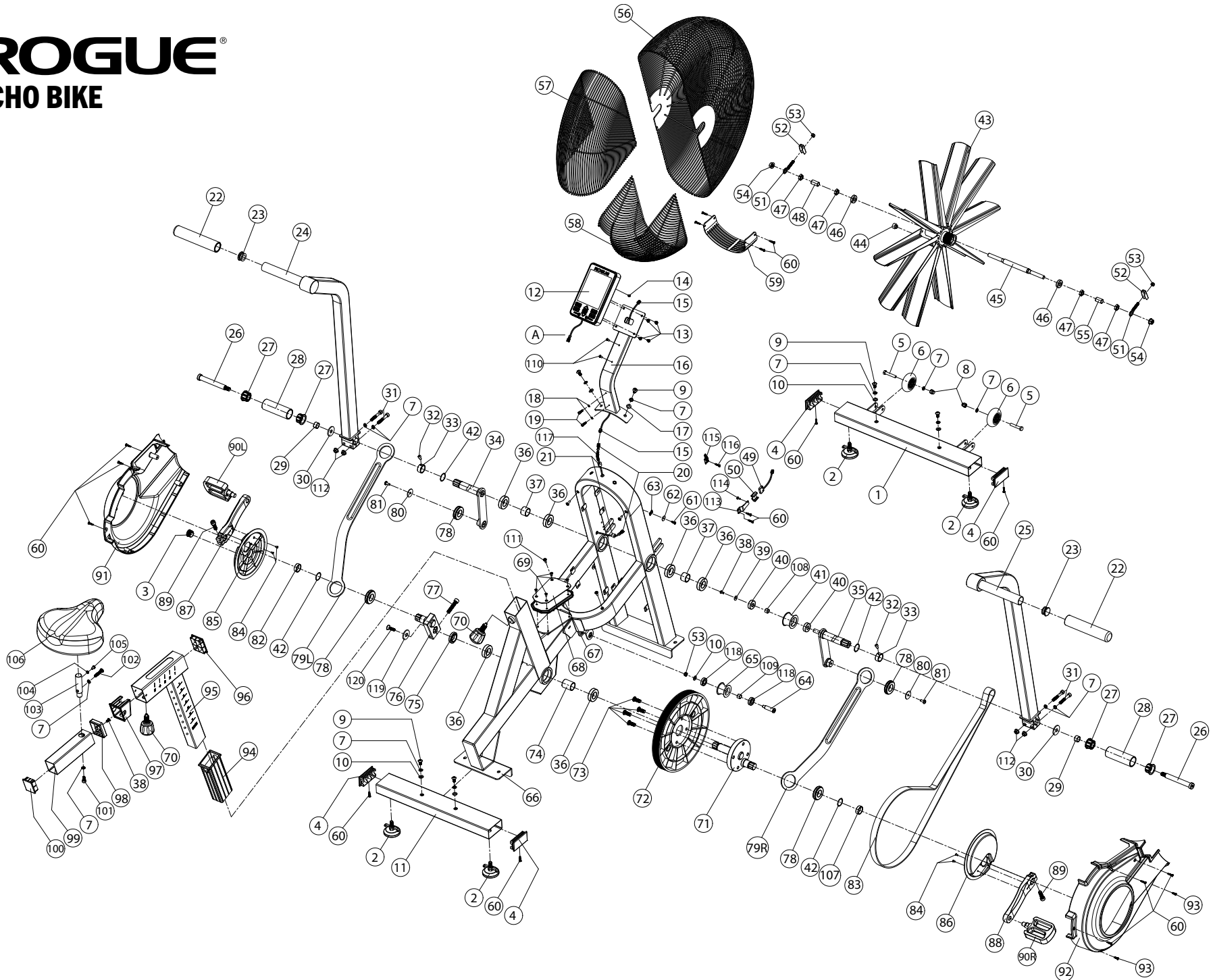


ROGUE[®]

ECHO BIKE



SCHEMATIC-1

ROGUE®

ECHO BIKE PARTS LIST

SCHEMATIC-1

DIAGRAM #	PART #	DESCRIPTION
1	IP0895-1	Front Stabilizer
2	IP0810	Rogue ECHO Bike - Footpad
3	IP0895-125	Round End Cap
4	IP0817	Rogue ECHO Bike - Foot Base End Cap
5	IP0895-126	Hexagon Socket Screw
6	IP0818	Rogue ECHO Bike - Transport Wheel
7	IP0334	Rogue ECHO Bike - M8 Spring Washer Black (Part # 7)
8	IP0895-8	Rogue ECHO Bike - M8x20 Hex Socket Button Head Screw (Part # 9)
9	IP0320	Rogue ECHO Bike - M8x20 Hex Socket Button Head Screw (Part # 9)
10	IP0333	Rogue ECHO Bike - M8 Washer Black (Part # 10)
11	IP0215	Rogue ECHO Bike - Rear Stabilizer (Part # 11)
12	IP0904	Rogue Echo Bike v3.0 - Console
13	IP0327	Rogue ECHO Bike - M5x10 Pan Head Cross Recessed Screw (Part # 13)
14	IP0895-14	Battery Door Screw
15	IP0895-15	Upper Wire
16	IP0895-16	Console Mast
17	IP0358	Rogue ECHO Bike - M8 Arc Washer (Part # 17)
18	IP0895-18	Spring Washer
19	IP0895-19	Hexagon Socket cap Head Screws
20	IP0895-20	Middle Wire
21	IP0895-21	Wire Clamp
22	IP0895-22	Handle Grip
23	IP0895-23	Round End Cap
24	IP0895-24	Left Handlebar
25	IP0895-25	Right Handlebar
26	IP0895-26	Footpeg Bolt
27	IP0895-27	Bushing
28	IP0895-28	Footpeg
29	IP0895-29	Footpeg Spacer
30	IP0895-30	Footpeg Washer
31	IP0335	Rogue ECHO Bike - M8x50 Hex Socket Cap Screw w/ thread lock (Part # 31)
32	IP0355	Rogue ECHO Bike - M6x8 Flat Head Screw (Part #32)
33	IP0895-33	Axle Bushing

DIAGRAM #	PART #	DESCRIPTION
34	IP0321	Rogue ECHO Bike - Left HB Link Arm Assembly (Part # 34)
35	IP0340	Rogue ECHO Bike - Right HB Link Arm Assembly (Part #35)
36	IP0895-36	Axle Bearing
37	IP0895-37	Handlebar Axle Bushing
38	IP0344	Rogue ECHO Bike - M5 x10 Button Head Screw (Part #38)
39	IP0895-39	Axle Washer
40	IP0895-40	Bearing
41	IP0895-41	Front Belt Pulley
42	IP0907	Rogue ECHO Bike v3.0 - Replacement Washer (Part #42)
43	IP0343	Rogue ECHO Bike - Fan Assembly (Part #43)
44	IP0359	Rogue ECHO Bike - Magnet (Part # 44)
45	IP0346	Rogue ECHO Bike - Fan Axle M12 x 1.25 (Part #45)
46	IP0347	Rogue ECHO Bike - Bearing - 6001ZZM (Part #46)
47	IP0348	Rogue ECHO Bike - Nut M12 x 1.25 (Part #47)
48	IP0895-48	Fan Axle Spacer
49	IP0895-49	Lower Wire with Sensor
50	IP0895-127	Senor Bracket
51	IP0329	Rogue ECHO Bike - M8 Lever Bolt (Part # 51)
52	IP0330	Rogue ECHO Bike - U Shape Plate (Part # 52)
53	IP0331	Rogue ECHO Bike - M8 Lock Nut (Part # 53)
54	IP0354	Rogue ECHO Bike - M5 x10 Button Head Screw (Part #38)
55	IP0895-55	Fan Axle Spacer
56	IP0895-56	Front Fan Shield - Echo Bike V3
57	IP0357	Rogue ECHO Bike - Upper Fan Shield (Part #57)
58	IP0901	Rogue ECHO Bike v3.0 - Bottom Fan Cage
59	IP0895-58	Rear Bottom Fan Shield - Echo Bike V3
60	IP0322	Rogue ECHO Bike - ST4.2x19 Cross Recessed Pan Head Tapping (Part # 60)
61	IP0351	Rogue ECHO Bike - Fan Cage Screw (Part # 61)
62	IP0339	Rogue ECHO Bike - Washer (Part# 62)
63	IP0352	Rogue ECHO Bike - Fan Cage Spring Clip (Part # 63)
64	IP0895-64	Belt Pulley Bolt
65	IP0895-65	Rear Belt Pulley
66	IP0895-66	Main Frame

ROGUE®

ECHO BIKE PARTS LIST

SCHEMATIC-1

DIAGRAM #	PART #	DESCRIPTION
67	IP0895-67	Decoration Ring
68	IP0895-68	Decoration Plate
69	IP0895-69	Decoration Plate Countersunk Head Screws
70	IP0893	Rogue ECHO Bike v3.0 - Pop Pin v2.0
71	IP0350	Rogue ECHO Bike - Axle Assembly (Part #71)
72	IP0317	Rogue ECHO Bike - Belt Pulley (Part # 72)
73	IP0895-73	Hexagon Socket Button Head Screws
74	IP0895-74	Axle Spacer left
75	IP0353	Rogue ECHO Bike - Axle Spacer (Part #75)
76	IP0337	Rogue ECHO Bike - Left Crank Link Arm Assembly (Part # 76)
77	IP0332	Rogue ECHO Bike - M10x1.25x50 Hex Socket Head Screw (Part # 77)
78	IP0318	Rogue ECHO Bike - 6005 Bearing w/ Clamp (Part # 78)
79L	IP0897	Rogue ECHO Bike v3.0 -Link arm-LEFT
79R	IP0898	Rogue ECHO Bike v3.0 -Link arm-RIGHT
80	IP0349	Rogue ECHO Bike - Washer (Part #80)
81	IP0324	Rogue ECHO Bike - M6x15 Hex Socket Head Black (Part # 81)
82	IP0895-82	Left Crank Bushing
83	IP0806	Belt
84	IP0216	Rogue ECHO Bike - M4 Cross Recessed Countersunk Screw (Part # 84)
85	IP0913	Rogue ECHO Bike v3.0 - Crank Cover Left
86	IP0912	Rogue ECHO Bike v3.0 - Crank Cover Right
87	IP0899	Rogue ECHO Bike v3.0 -Crank-left
88	IP0900	Rogue ECHO Bike v3.0 -Crank-right
89	IP0328	Rogue ECHO Bike - M10x1.25x35 Hex Socket Head w/ threadlock (Part # 89)
90L/R	IP0847	Rogue ECHO Bike - v4 Metal Pedal (Pair)
91	IP0895-91	Crank Cover Left
92	IP0895-92	Crank Cover Right
93	IP0323	Rogue Echo Bike - ST4.2x10 Cross Recessed Pan Head Tapping (Part # 93)
94	IP0811	Seat Post Vertical Bushing
95	IP0895-95	V3 Seat Post
96	IP0815	Rogue ECHO Bike - Front Seattube End Cap
97	IP0812	Seat Post Horizontal Bushing
98	IP0814	Seattube slider

DIAGRAM #	PART #	DESCRIPTION
99	IP0895-99	Seat Sliding Tube
100	IP0816	Rogue ECHO Bike - Back Seattube End Cap
101	IP0895-101	Hexagon Socket Cap Head Screws
102	IP0895-102	Hexagon Socket Button Head Screws
103	IP0895-103	Seat Short round Tube
104	IP0895-104	Spring Washer
105	IP0895-105	Hexagon Headed Bolt
106	IP0832	Rogue ECHO Bike - Seat v2
107	IP0895-107	Right Crank Bushing - Echo Bike V3
108	IP0895-108	Front Belt Pulley Bushing
109	IP0895-109	Rear Belt Pulley Bushing
110	IP0895-110	Phone Holder Cross Head Screw
111	IP0319	Rogue ECHO Bike - M5x15 Pan Head Cross Screw (Part # 111)
112	IP0336	Rogue ECHO Bike - M8 Nut (Part # 112)
113	IP0895-113	Sensor Mounting Plate
114	IP0895-114	Sensor Mounting Plate Cross Head Screw
115	IP0895-115	Senor Mounting Tie
116	IP0895-116	Cross Countersunk Head Drilling Screws with Tapping Screw Thread
117	IP0895-117	Flexible Pipe for Wire
118	IP0895-128	Belt Pulley Bearing
119	IP0325	Rogue ECHO Bike - Washer M13x3 (Part # 119)
120	IP0326	Rogue ECHO Bike - M10x30 Hex Socket Countersink Head Screw (Part # 120)