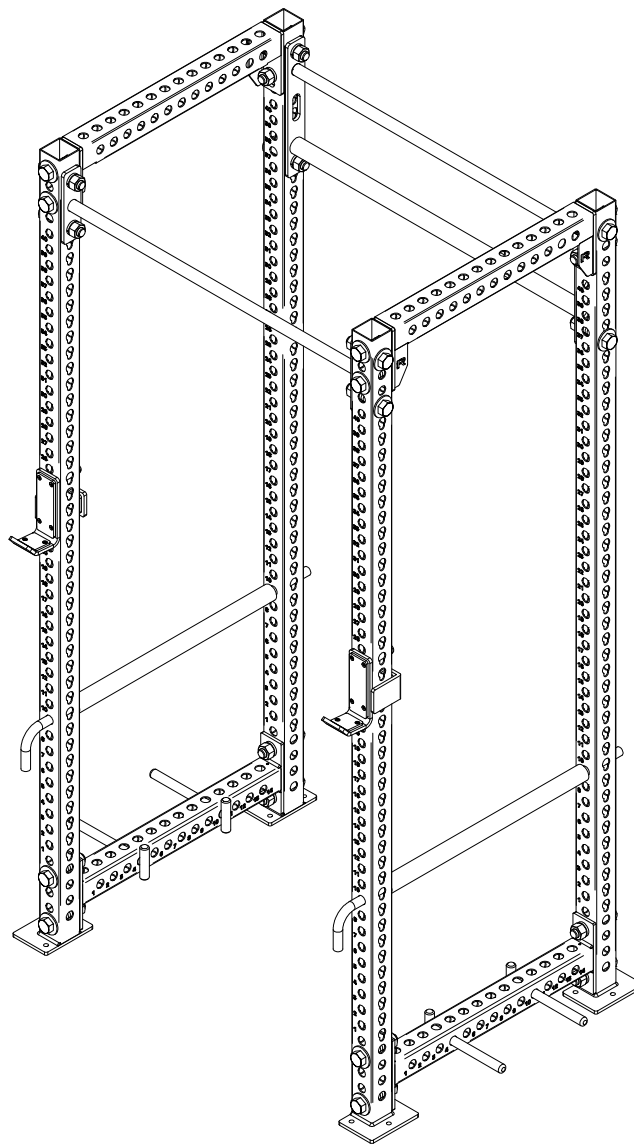


RM-3BT MONSTER 2.0



DISCLAIMER

Resistance training, gymnastics training, and activities at height are potentially dangerous and may lead to severe injury or even death. Use common sense when training, to obtain instruction in the proper execution of movements, and understand your limitations. This equipment must only be used by competent and responsible persons, or under the direct and visual control of a competent and responsible person. Obtaining instruction in appropriate techniques and methods of use is your own responsibility. You assume all risks and responsibilities for all damage, injury or death which may occur during or following incorrect use of this equipment in any matter whatsoever. Rogue Fitness bears no liability beyond the replacement value of the equipment in question.



WARNING!



MISUSE OF THIS CAN RESULT IN SEVERE INJURY

BOTH ROGUE FITNESS AND BUYER DISCLAIM ANY EXPRESS OR IMPLIED WARRANTY, INCLUDING, WITHOUT LIMITATION, WARRANTIES OR MERCHANTABILITY AND/OR FITNESS FOR A PARTICULAR PURPOSE WITH RESPECT TO THE EQUIPMENT. BUYER ASSUMES ALL LIABILITY IN USE OF EQUIPMENT.



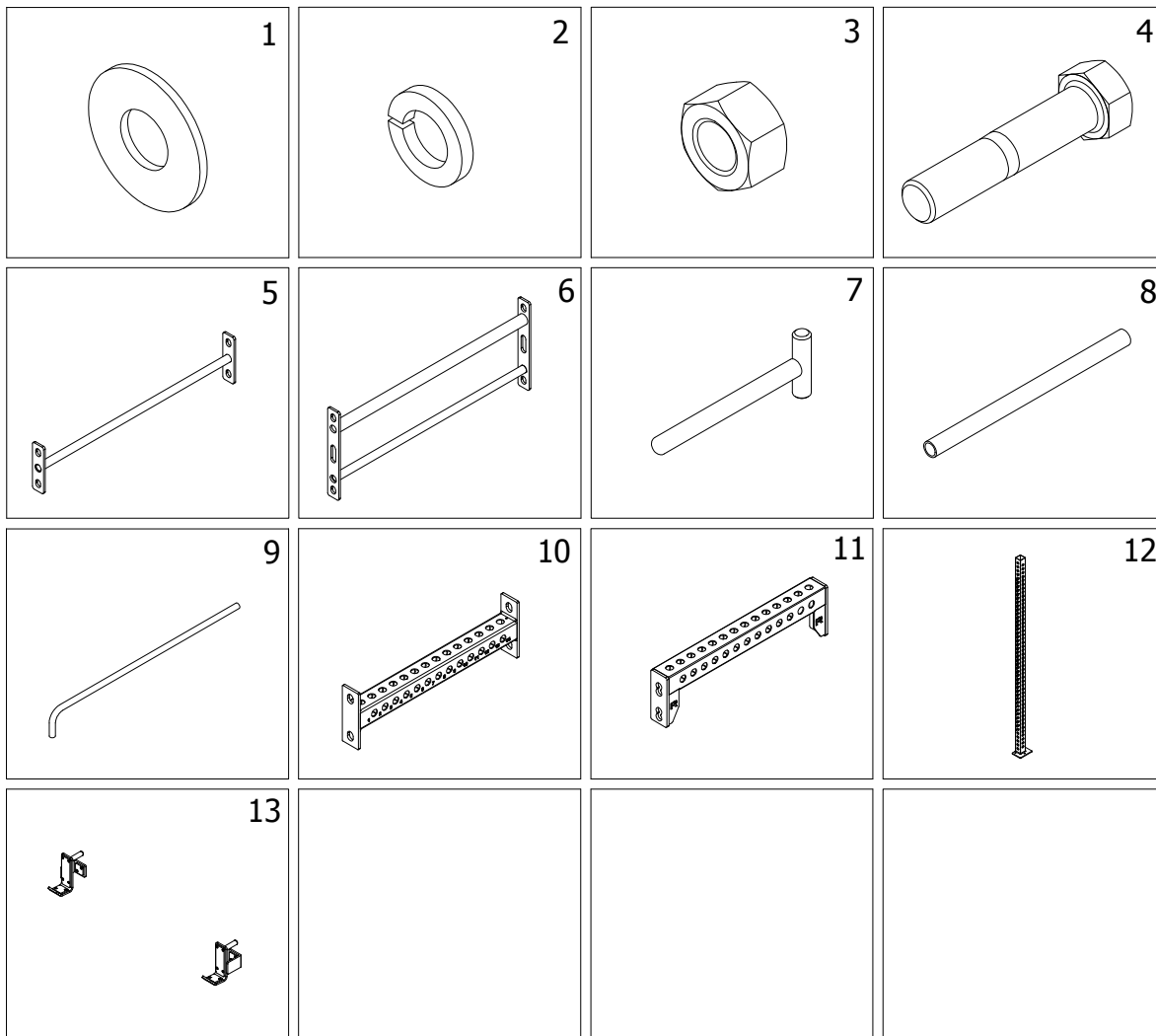
Rogue Fitness
1080 Steelwood Rd.
Columbus, Ohio 43212
614-358-6190
TEAM@Roguefitness.com

ROGUE FITNESS

RM-3BT MONSTER 2.0

INCLUDED PARTS
*NOTE: IMAGES NOT SHOWN TO SCALE

PARTS LIST		
ITEM	QTY	DESCRIPTION
1	24	1" FLAT WASHER
2	24	1" LOCK WASHER
3	24	1"-8 HEX NUT
4	24	1"-8 x 4.75" HEX HEAD BOLT
5	1	43" SKINNY PULL-UP BAR *
6	1	43" FAT / SKINNY PULL-UP BAR *
7	4	BAND PEGS
8	2	RACK PIPE 29"
9	2	1" x 42" MONSTER SAFETY PIN
10	2	MONSTER 2.0 30" BOTTOM CROSSMEMBER
11	2	MONSTER 2.0 30" TOP CROSSMEMBER
12	4	MONSTER 2.0 100" LEG *
13	1	V2 MONSTER J-CUP PAIR



* LEG HEIGHT CAN VARY; 90", 100" & 108". 100" SHOWN AS EXAMPLE

* PULL-UP BAR MAY VARY BASED UPON SELECTION AT CHECKOUT

DISCLAIMER

Resistance training, gymnastics training, and activities at height are potentially dangerous and may lead to severe injury or even death. Use common sense when training, to obtain instruction in the proper execution of movements, and understand your limitations. This equipment must only be used by competent and responsible persons, or under the direct and visual control of a competent and responsible person. Obtaining instruction in appropriate techniques and methods of use is your own responsibility. You assume all risks and responsibilities for all damage, injury or death which may occur during or following incorrect use of this equipment in any matter whatsoever. Rogue Fitness bears no liability beyond the replacement value of the equipment in question.



WARNING!



MISUSE OF THIS CAN RESULT IN SEVERE INJURY

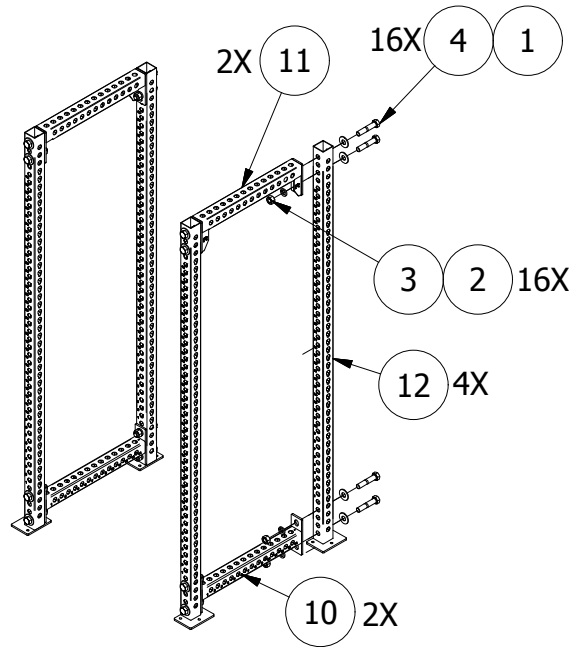
BOTH ROGUE FITNESS AND BUYER DISCLAIM ANY EXPRESS OR IMPLIED WARRANTY, INCLUDING, WITHOUT LIMITATION, WARRANTIES OR MERCHANTABILITY AND/OR FITNESS FOR A PARTICULAR PURPOSE WITH RESPECT TO THE EQUIPMENT. BUYER ASSUMES ALL LIABILITY IN USE OF EQUIPMENT.



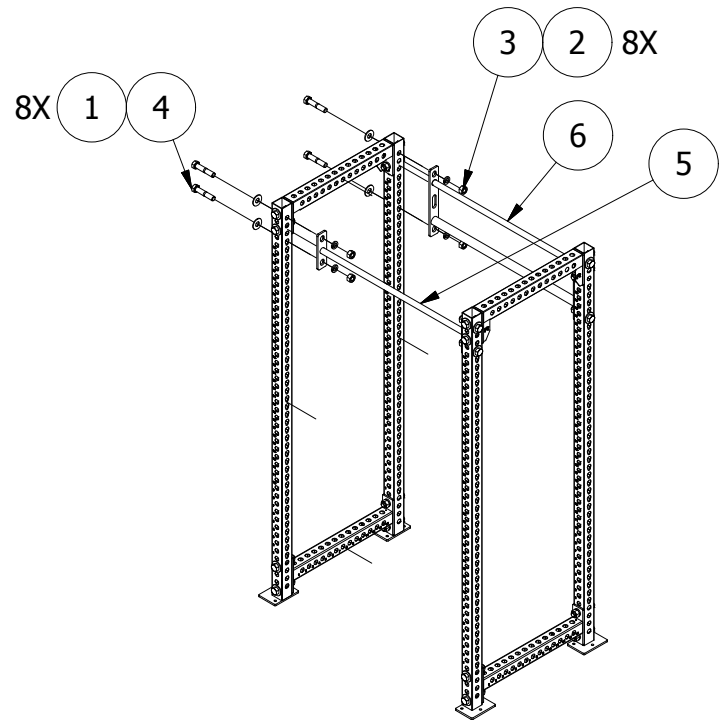
Rogue Fitness
1080 Steelwood Rd.
Columbus, Ohio 43212
614-358-6190
TEAM@Roguefitness.com

ROGUE FITNESS

RM-3BT MONSTER 2.0



STEP 1: ASSEMBLE SIDE FRAMES FROM ITEM # 10, 11, & 12.
 SECURE USING 1" x 4.75" HEX BOLTS, 1" FLAT WASHERS,
 1" LOCK WASHERS, AND 1" HEX NUTS.



STEP 2: ASSEMBLE PULL-UP BARS TO SIDE FRAMES. SECURE
 USING 1" x 4.75" HEX BOLTS, 1" FLAT WASHERS,
 1" LOCK WASHERS, AND 1" HEX NUTS.

DISCLAIMER

Resistance training, gymnastics training, and activities at height are potentially dangerous and may lead to severe injury or even death. Use common sense when training, to obtain instruction in the proper execution of movements, and understand your limitations. This equipment must only be used by competent and responsible persons, or under the direct and visual control of a competent and responsible person. Obtaining instruction in appropriate techniques and methods of use is your own responsibility. You assume all risks and responsibilities for all damage, injury or death which may occur during or following incorrect use of this equipment in any matter whatsoever. Rogue Fitness bears no liability beyond the replacement value of the equipment in question.



WARNING!



MISUSE OF THIS CAN RESULT IN
 SEVERE INJURY

BOTH ROGUE FITNESS AND BUYER DISCLAIM ANY EXPRESS OR IMPLIED WARRANTY, INCLUDING, WITHOUT LIMITATION, WARRANTIES OR MERCHANTABILITY AND/OR FITNESS FOR A PARTICULAR PURPOSE WITH RESPECT TO THE EQUIPMENT. BUYER ASSUMES ALL LIABILITY IN USE OF EQUIPMENT.

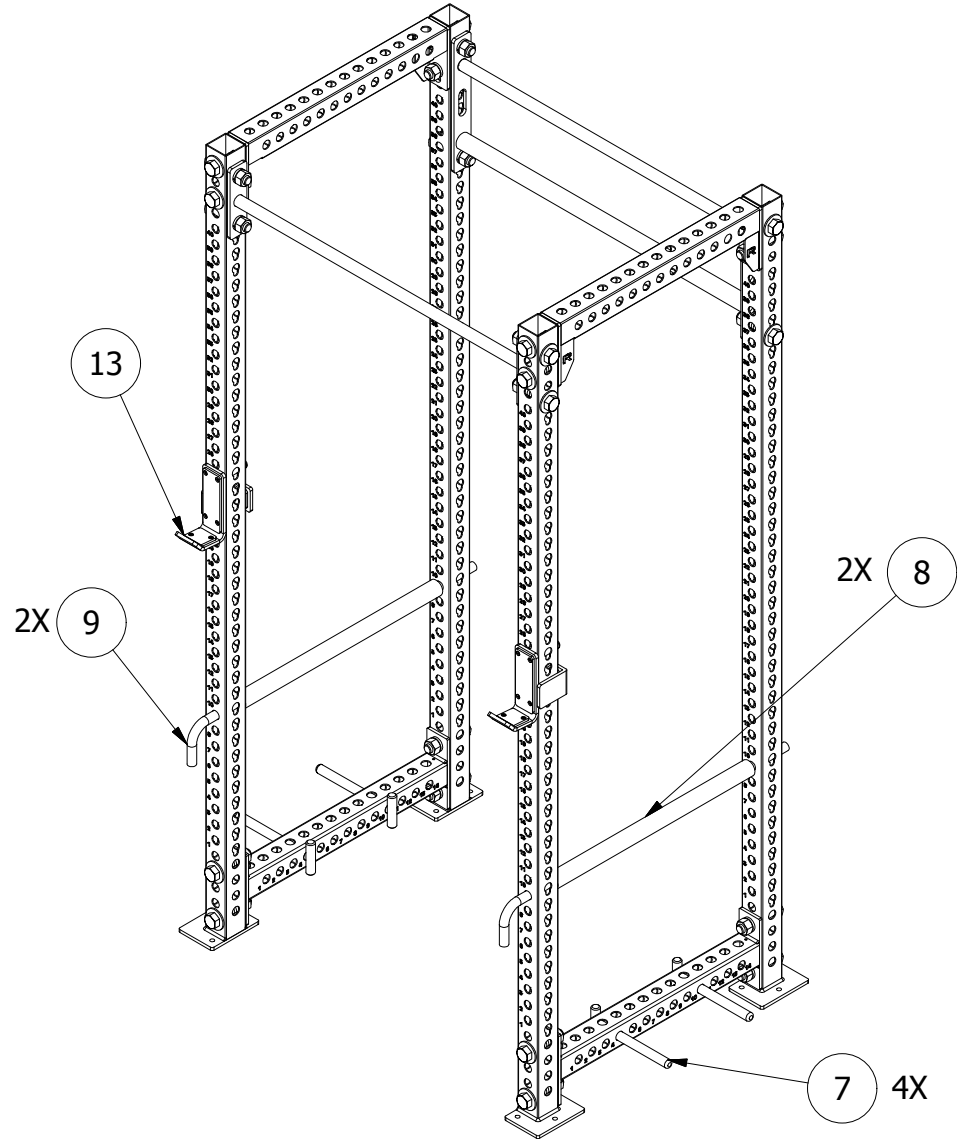


Rogue Fitness
 1080 Steelwood Rd.
 Columbus, Ohio 43212
 614-358-6190
 TEAM@Roguefitness.com

ROGUE FITNESS

RM-3BT MONSTER 2.0

STEP 3: ATTACHED J-CUPS, SAFETY PIN & PIPE, AND BAND PEGS AT DESIRED LOCATION



DISCLAIMER

Resistance training, gymnastics training, and activities at height are potentially dangerous and may lead to severe injury or even death. Use common sense when training, to obtain instruction in the proper execution of movements, and understand your limitations. This equipment must only be used by competent and responsible persons, or under the direct and visual control of a competent and responsible person. Obtaining instruction in appropriate techniques and methods of use is your own responsibility. You assume all risks and responsibilities for all damage, injury or death which may occur during or following incorrect use of this equipment in any matter whatsoever. Rogue Fitness bears no liability beyond the replacement value of the equipment in question.



WARNING!

MISUSE OF THIS CAN RESULT IN SEVERE INJURY

BOTH ROGUE FITNESS AND BUYER DISCLAIM ANY EXPRESS OR IMPLIED WARRANTY, INCLUDING, WITHOUT LIMITATION, WARRANTIES OR MERCHANTABILITY AND/OR FITNESS FOR A PARTICULAR PURPOSE WITH RESPECT TO THE EQUIPMENT. BUYER ASSUMES ALL LIABILITY IN USE OF EQUIPMENT.



Rogue Fitness
1080 Steelwood Rd.
Columbus, Ohio 43212
614-358-6190
TEAM@Roguefitness.com