

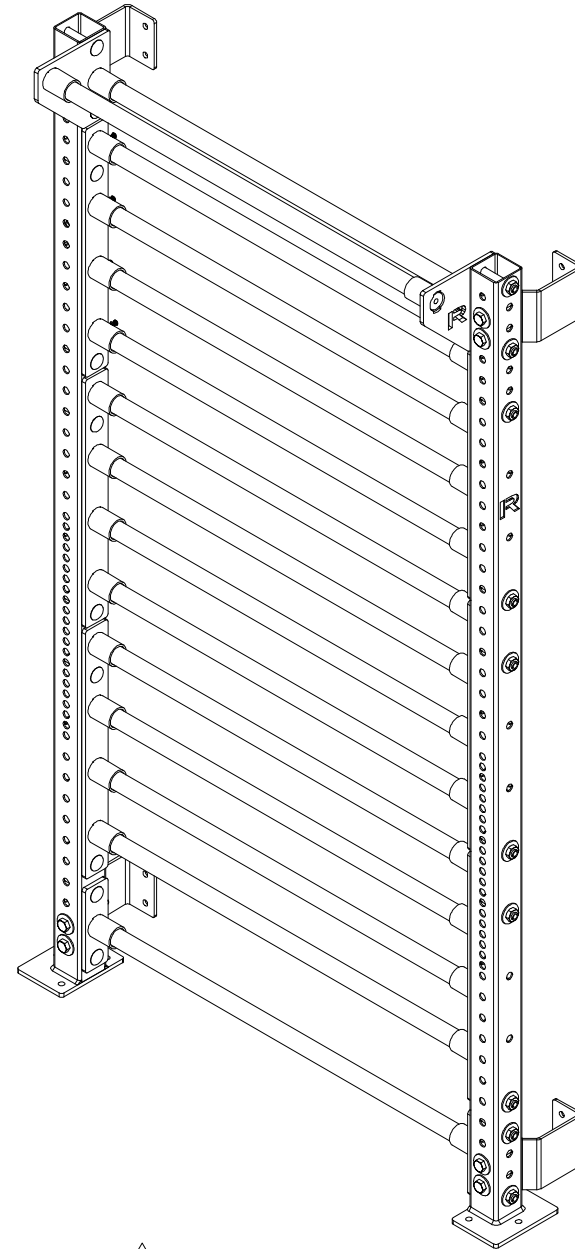
## Rogue Wood Stall Bars

### NOTES:

- 1) IF YOU ARE NOT CONFIDENT IN YOUR MECHANICAL SKILLS, PLEASE SEEK THE HELP OF A PROFESSIONAL TO PERFORM THE INSTALLATION. IT IS THE BUYERS RESPONSIBILITY TO INSTALL THE STALL BARS IN A LOCATION AND WITH HARDWARE CAPABLE OF SUPPORTING THE AGGREGATE WEIGHT OF THE STALL BARS AND ALL GEAR MOUNTED OR STORED ON IT, AND ANY PERSON USING IT.
- 2) IT IS NEVER RECOMMENDED TO INSTALL THE STALL BARS ON A DRYWALL, WOOD OR METAL STUD WALL WITHOUT A STRINGER OR ADDITIONAL SUPPORT.
- 3) TEST UNIT FOR STABILITY BEFORE EACH USE.

## DISCLAIMER

Resistance training, gymnastics training, and activities at height are potentially dangerous and may lead to severe injury or even death. Use common sense when training, to obtain instruction in the proper execution of movements, and understand your limitations. This equipment must only be used by competent and responsible persons, or under the direct and visual control of a competent and responsible person. Obtaining instruction in appropriate techniques and methods of use is your own responsibility. You assume all risks and responsibilities for all damage, injury or death which may occur during or following incorrect use of this equipment in any matter whatsoever. Rogue Fitness bears no liability beyond the replacement value of the equipment in question.



MISUSE OF THIS CAN RESULT IN  
SEVERE INJURY

BOTH ROGUE FITNESS AND BUYER DISCLAIM ANY EXPRESS OR IMPLIED WARRANTY, INCLUDING, WITHOUT LIMITATION, WARRANTIES OR MERCHANTABILITY AND/OR FITNESS FOR A PARTICULAR PURPOSE WITH RESPECT TO THE EQUIPMENT. BUYER ASSUMES ALL LIABILITY IN USE OF EQUIPMENT.

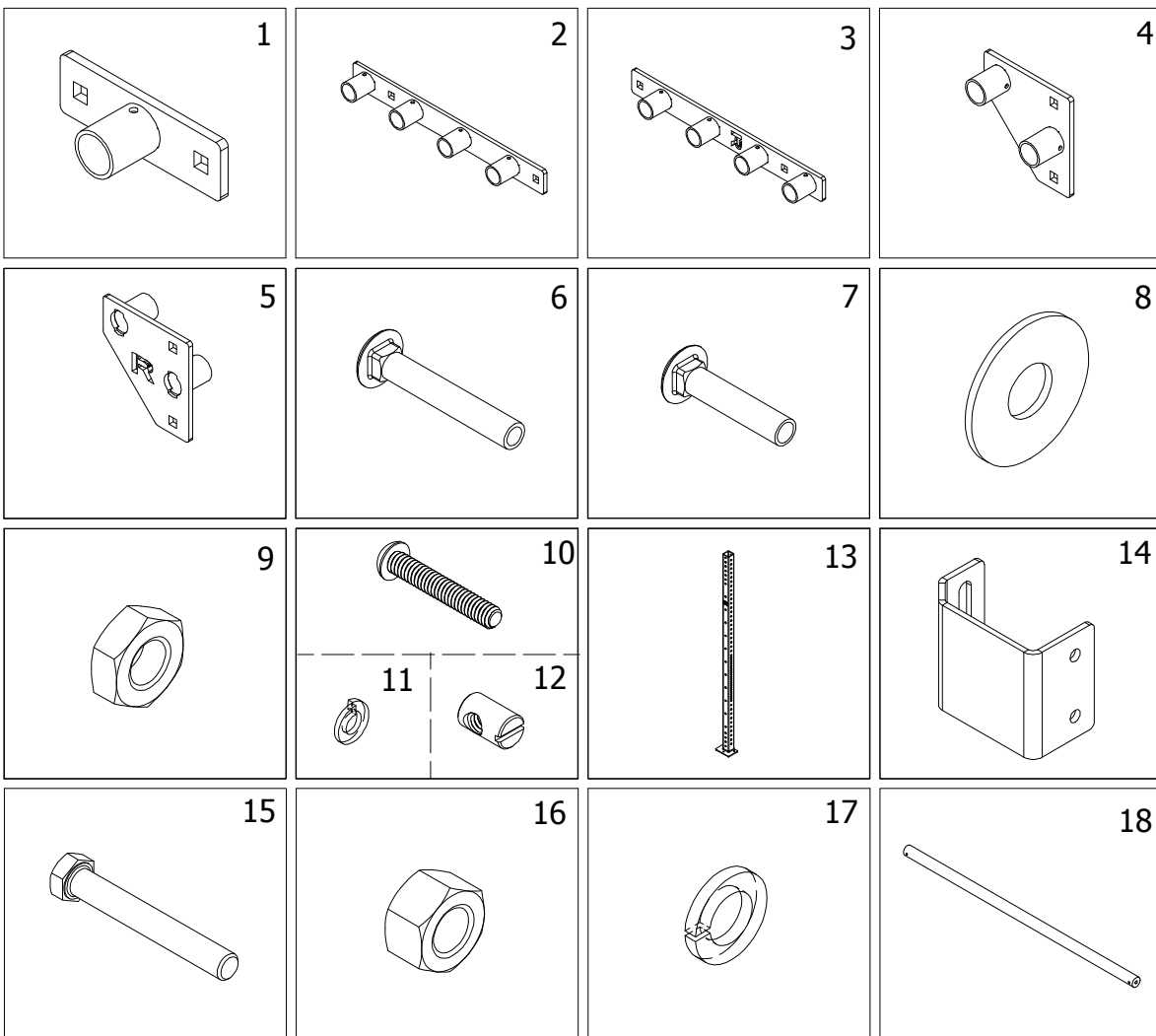


**Rogue Fitness**  
1080 Steelwood Rd.  
Columbus, Ohio 43212  
614-358-6190  
TEAM@Roguefitness.com

# ROGUE FITNESS

## Stall Bars

\*NOTE: IMAGES NOT SHOWN TO SCALE



### STALL BAR KIT

ITEM	QTY.	DESCRIPTION
1	2	SINGLE STALL BAR
2	3	LONG STALL BAR - LEFT
3	3	LONG STALL BAR - RIGHT
4	1	TOP STALL BAR - LEFT
5	1	TOP STALL BAR - RIGHT

### STALL BAR KIT HARDWARE

ITEM	QTY.	DESCRIPTION
6	20	5/8" - 11 x 4" CARRIAGE BOLT*
7	20	5/8" - 11 x 3" CARRIAGE BOLT**
8	20	5/8" FLAT WASHER
9	20	5/8" - 11 LOW PROFILE NYLOCK NUT
10	30	1/4" - 20 x 1.5" BUTTON HEAD CAP SCREW
11	30	1/4" LOCK WASHER
12	30	1/4" - 20 x 16mm DOWEL NUT

\* MONSTER LITE VERSION

\*\* INFINITY VERSION

### UPRIGHTS (Optional)

ITEM	QTY.	DESCRIPTION
13	2	90" MONSTER LITE UPRIGHT

### WALL MOUNT BRACKETS (Optional)

ITEM	QTY.	DESCRIPTION
14	4	WALL MOUNT BRACKET
15	8	5/8"-11 x 4.25" HEX BOLT
8	8	5/8" FLAT WASHER
16	8	5/8"-11 HEX NUT
17	8	5/8" SPLIT LOCK WASHER

### STALL BAR WOOD DOWELS

ITEM	QTY.	DESCRIPTION
18	15	WOODEN DOWEL

## DISCLAIMER

Resistance training, gymnastics training, and activities at height are potentially dangerous and may lead to severe injury or even death. Use common sense when training, to obtain instruction in the proper execution of movements, and understand your limitations. This equipment must only be used by competent and responsible persons, or under the direct and visual control of a competent and responsible person. Obtaining instruction in appropriate techniques and methods of use is your own responsibility. You assume all risks and responsibilities for all damage, injury or death which may occur during or following incorrect use of this equipment in any matter whatsoever. Rogue Fitness bears no liability beyond the replacement value of the equipment in question.



## WARNING!

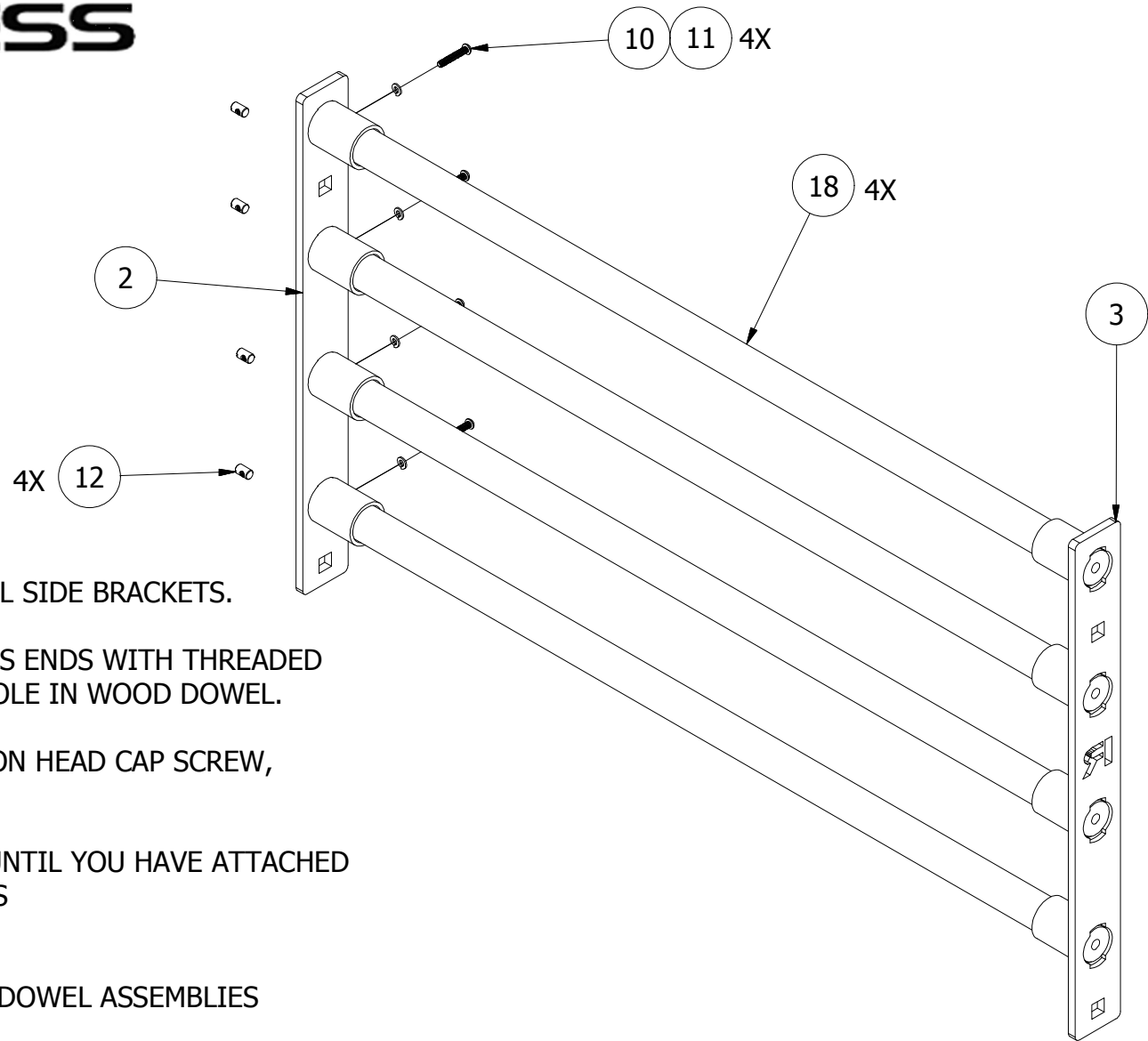


MISUSE OF THIS CAN RESULT IN SEVERE INJURY

BOTH ROGUE FITNESS AND BUYER DISCLAIM ANY EXPRESS OR IMPLIED WARRANTY, INCLUDING, WITHOUT LIMITATION, WARRANTIES OR MERCHANTABILITY AND/OR FITNESS FOR A PARTICULAR PURPOSE WITH RESPECT TO THE EQUIPMENT. BUYER ASSUMES ALL LIABILITY IN USE OF EQUIPMENT.



**Rogue Fitness**  
 1080 Steelwood Rd.  
 Columbus, Ohio 43212  
 614-358-6190  
 TEAM@Roguefitness.com



STEP 1: INSERT WOOD DOWELS INTO STEEL SIDE BRACKETS.

STEP 2: INSERT DOWEL NUTS INTO DOWELS ENDS WITH THREADED HOLES ALIGNED WITH THE SIDE HOLE IN WOOD DOWEL.

STEP 3: SECURE WITH 1/4"-20 x 1.5" BUTTON HEAD CAP SCREW, AND 1/4" LOCK WASHER.

DO NOT FULLY TIGHTEN SCREWS UNTIL YOU HAVE ATTACHED THE END PLATES TO THE UPRIGHTS

\*PROCESS IS THE SAME FOR ALL WOODEN DOWEL ASSEMBLIES

## DISCLAIMER

Resistance training, gymnastics training, and activities at height are potentially dangerous and may lead to severe injury or even death. Use common sense when training, to obtain instruction in the proper execution of movements, and understand your limitations. This equipment must only be used by competent and responsible persons, or under the direct and visual control of a competent and responsible person. Obtaining instruction in appropriate techniques and methods of use is your own responsibility. You assume all risks and responsibilities for all damage, injury or death which may occur during or following incorrect use of this equipment in any matter whatsoever. Rogue Fitness bears no liability beyond the replacement value of the equipment in question.

\* SEE SHEET 2 FOR ITEM DESCRIPTIONS AND QUANTITIES \*



## WARNING!

MISUSE OF THIS CAN RESULT IN SEVERE INJURY

BOTH ROGUE FITNESS AND BUYER DISCLAIM ANY EXPRESS OR IMPLIED WARRANTY, INCLUDING, WITHOUT LIMITATION, WARRANTIES OR MERCHANTABILITY AND/OR FITNESS FOR A PARTICULAR PURPOSE WITH RESPECT TO THE EQUIPMENT. BUYER ASSUMES ALL LIABILITY IN USE OF EQUIPMENT.



**Rogue Fitness**  
 1080 Steelwood Rd.  
 Columbus, Ohio 43212  
 614-358-6190  
 TEAM@Roguefitness.com

# ROGUE FITNESS

## Stall Bars

STEP 4: SECURE STALL BAR CROSSMEMBERS TO UPRIGHTS USING 5/8" CARRIAGE BOLTS\*, 5/8" FLAT WASHERS AND 5/8" LOCK NUTS. DO NOT FULLY TIGHTEN HARDWARE.

IF MOUNTING TO AN EXISTING RACK OR RIG SKIP TO STEP 6.

STEP 5: SECURE OPTIONAL STALL BAR WALL MOUNT BRACKETS TO UPRIGHTS USING 5/8" x 4-1/4" BOLTS, 5/8" FLAT WASHERS, 5/8" LOCK WASHERS AND 5/8" NUTS.

DO NOT FULLY TIGHTEN HARDWARE UNTIL ALL BRACKETS ARE INSTALLED.

STEP 6: FULL TIGHTEN HARDWARE ONCE ALL STALL BAR CROSSMEMBERS AND STALL BAR WALL MOUNT BRACKETS ARE INSTALLED.

\*4" CARRIAGE BOLTS FOR MONSTER LITE, 3" CARRIAGE BOLTS FOR INFINITY UPRIGHTS

**\*\*IMPORTANT\*\***

SEE NOTES ON WALL MOUNTING ON SHEET 1.

WALL MOUNTING HARDWARE NOT INCLUDED.

**NOTE: INFINITY UPRIGHTS PURCHASED PRIOR TO AUGUST 2012 DO NOT FEATURE 6" HOLE SPACING, IF THIS IS THE CASE YOU MAY BE REQUIRED TO DRILL YOUR OWN HOLES.**

## DISCLAIMER

Resistance training, gymnastics training, and activities at height are potentially dangerous and may lead to severe injury or even death. Use common sense when training, to obtain instruction in the proper execution of movements, and understand your limitations. This equipment must only be used by competent and responsible persons, or under the direct and visual control of a competent and responsible person. Obtaining instruction in appropriate techniques and methods of use is your own responsibility. You assume all risks and responsibilities for all damage, injury or death which may occur during or following incorrect use of this equipment in any matter whatsoever. Rogue Fitness bears no liability beyond the replacement value of the equipment in question.

\* SEE SHEET 2 FOR ITEM DESCRIPTIONS AND QUANTITIES \*

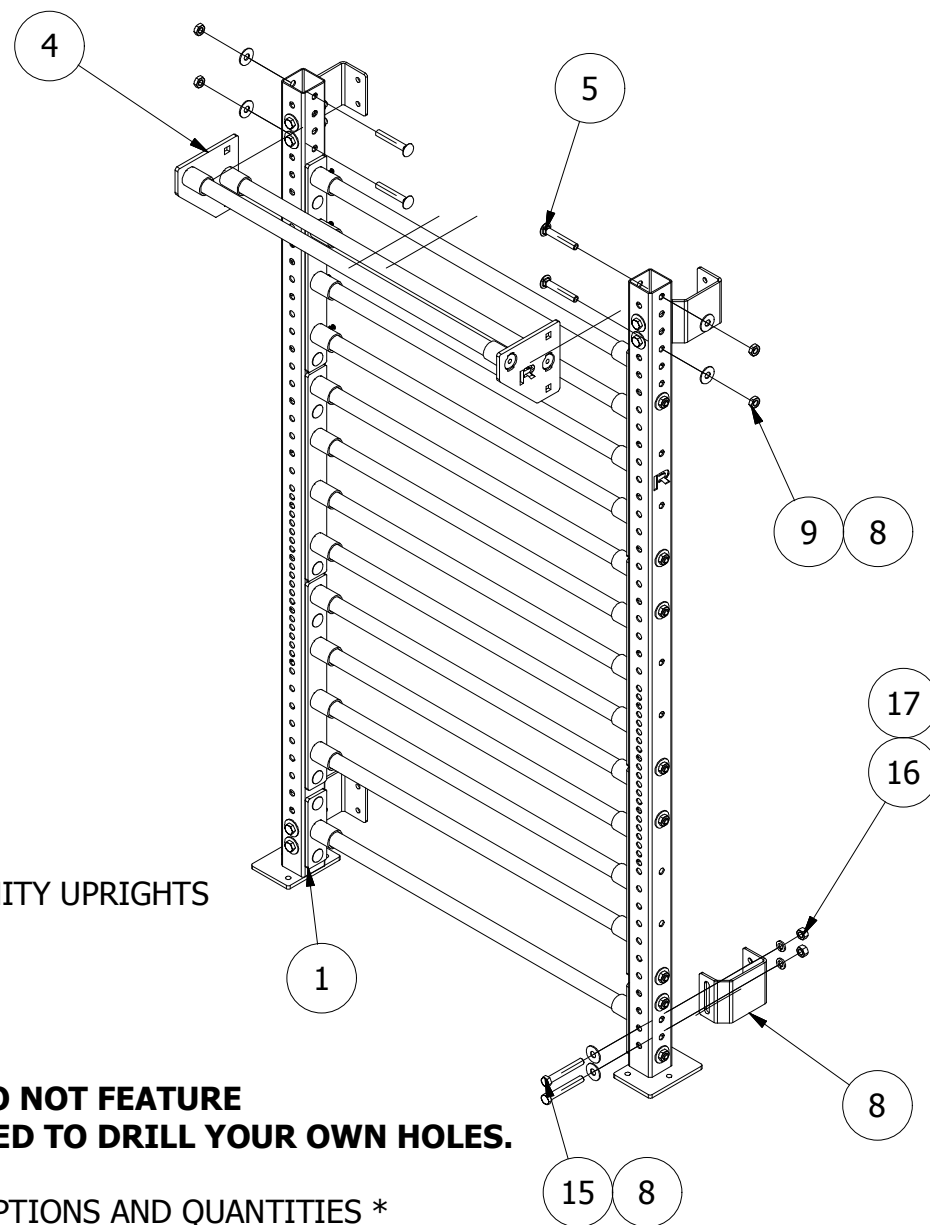


# WARNING!



MISUSE OF THIS CAN RESULT IN SEVERE INJURY

BOTH ROGUE FITNESS AND BUYER DISCLAIM ANY EXPRESS OR IMPLIED WARRANTY, INCLUDING, WITHOUT LIMITATION, WARRANTIES OR MERCHANTABILITY AND/OR FITNESS FOR A PARTICULAR PURPOSE WITH RESPECT TO THE EQUIPMENT. BUYER ASSUMES ALL LIABILITY IN USE OF EQUIPMENT.



**Rogue Fitness**  
1080 Steelwood Rd.  
Columbus, Ohio 43212  
614-358-6190  
TEAM@Roguefitness.com