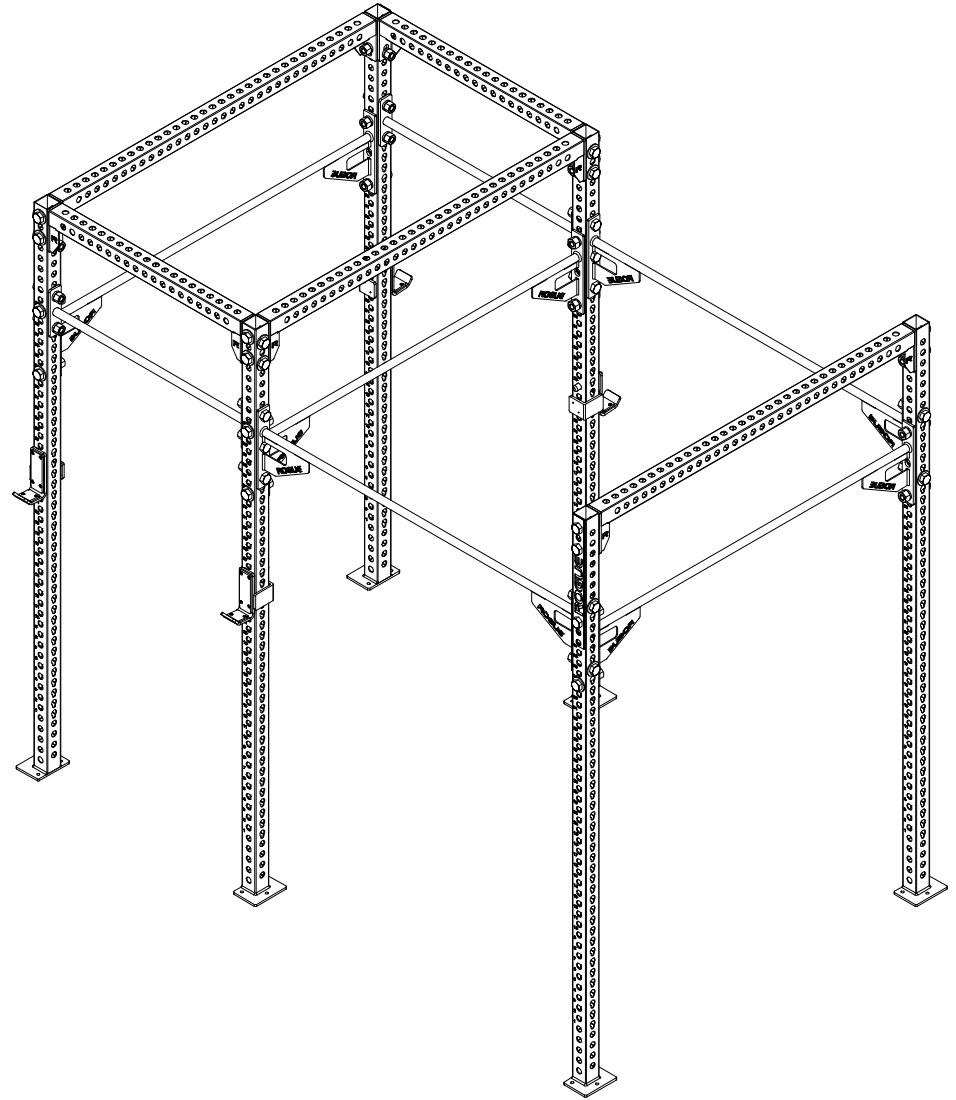


MONSTER 2.0 M-10 RIG



***NOTE: ASSEMBLING A RIG REQUIRES MULTIPLE PEOPLE.
ASK YOUR FRIENDS FOR HELP WHEN BUILDING**

DISCLAIMER

Resistance training, gymnastics training, and activities at height are potentially dangerous and may lead to severe injury or even death. Use common sense when training, to obtain instruction in the proper execution of movements, and understand your limitations. This equipment must only be used by competent and responsible persons, or under the direct and visual control of a competent and responsible person. Obtaining instruction in appropriate techniques and methods of use is your own responsibility. You assume all risks and responsibilities for all damage, injury or death which may occur during or following incorrect use of this equipment in any matter whatsoever. Rogue Fitness bears no liability beyond the replacement value of the equipment in question.



**MISUSE OF THIS CAN RESULT IN
SEVERE INJURY**

BOTH ROGUE FITNESS AND BUYER DISCLAIM ANY EXPRESS OR IMPLIED WARRANTY, INCLUDING, WITHOUT LIMITATION, WARRANTIES OR MERCHANTABILITY AND/OR FITNESS FOR A PARTICULAR PURPOSE WITH RESPECT TO THE EQUIPMENT. BUYER ASSUMES ALL LIABILITY IN USE OF EQUIPMENT.



Rogue Fitness
1080 Steelwood Rd.
Columbus, Ohio 43212
614-358-6190
TEAM@Roguefitness.com

ROGUE FITNESS

MONSTER 2.0 M-10 RIG

INCLUDED PARTS
*NOTE: IMAGES NOT SHOWN TO SCALE

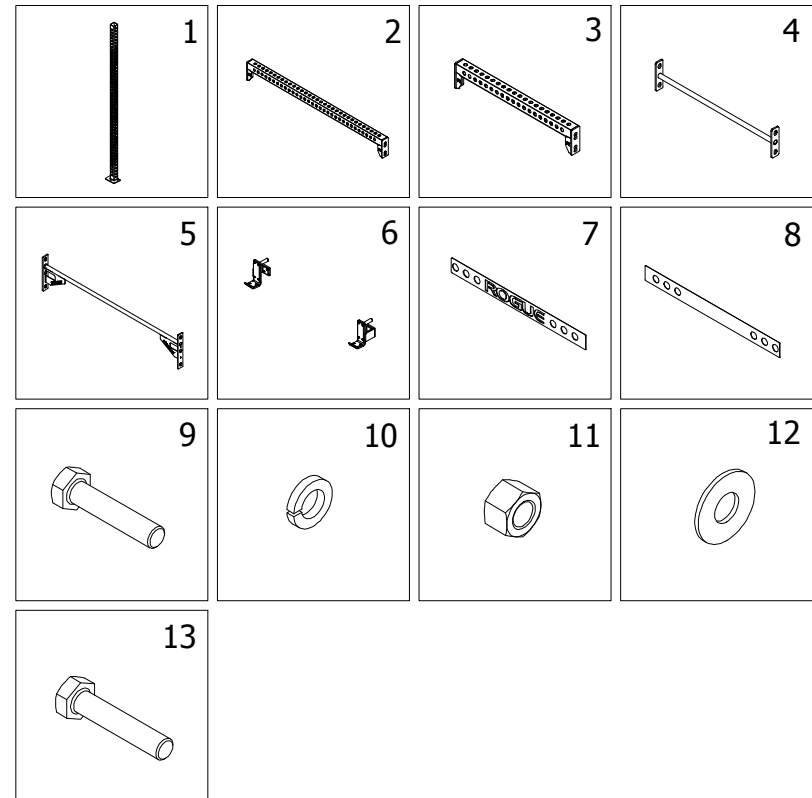
PARTS LIST		
ITEM	QTY	DESCRIPTION
1	6	MONSTER 2.0 108" UPRIGHT
2	3	MONSTER 2.0 70" TOP CROSSMEMBER
3	2	MONSTER 2.0 43" TOP CROSSMEMBER
4	2	43" SKINNY PULL-UP BAR
5	5	MONSTER 2.0 SINGLE 70" PULL-UP BAR
6	2	MONSTER J-CUP PAIR
7	2	MONSTER 2.0 NAMEPLATE
8	2	MONSTER 2.0 NAMEPLATE SS BACKER
9	42	1" x 4.75" HEX BOLT
10	46	1" LOCK WASHER
11	46	1" HEX NUT
12	36	1" FLAT WASHER
13	4	1" x 5" HEX BOLT

NOTES:

- 1) IT IS HIGHLY RECOMMENDED THAT ALL RIGS ARE SECURELY ANCHORED TO THE FLOOR
- 2) DO NOT BOLT THE RIG TO THE FLOOR UNTIL IT IS FULLY ASSEMBLED AND ALL HARDWARE IS TIGHTENED.
- 3) ANCHOR UNIT TO THE FLOOR THROUGH HOLES IN FEET. IF USING RUBBER FLOORING, IT IS HIGHLY RECOMMENDED TO CUT OUT A SECTION OF FLOORING SO THE FEET ANCHOR DIRECTLY TO THE FLOOR.
- 4) ANCHOR TO A WOOD OR SOLID CONCRETE FLOOR AS FOLLOWS:
 - A) WOOD: 3/8" x 3.5" WOOD LAG BOLTS.
 - B) SOLID CONCRETE: 3/8" x 3/5" CONCRETE WEDGE ANCHORS.
 - C) **ANCHORING / MOUNTING HARDWARE NOT INCLUDED.**

DISCLAIMER

Resistance training, gymnastics training, and activities at height are potentially dangerous and may lead to severe injury or even death. Use common sense when training, to obtain instruction in the proper execution of movements, and understand your limitations. This equipment must only be used by competent and responsible persons, or under the direct and visual control of a competent and responsible person. Obtaining instruction in appropriate techniques and methods of use is your own responsibility. You assume all risks and responsibilities for all damage, injury or death which may occur during or following incorrect use of this equipment in any matter whatsoever. Rogue Fitness bears no liability beyond the replacement value of the equipment in question.



NOTE:

HARDWARE QUANTITIES ARE FOR RIG CONFIGURATION SHOWN. IF STANDARD CONFIGURATION IS NOT FOLLOWED ADDITIONAL HARDWARE MAY BE REQUIRED.



WARNING!

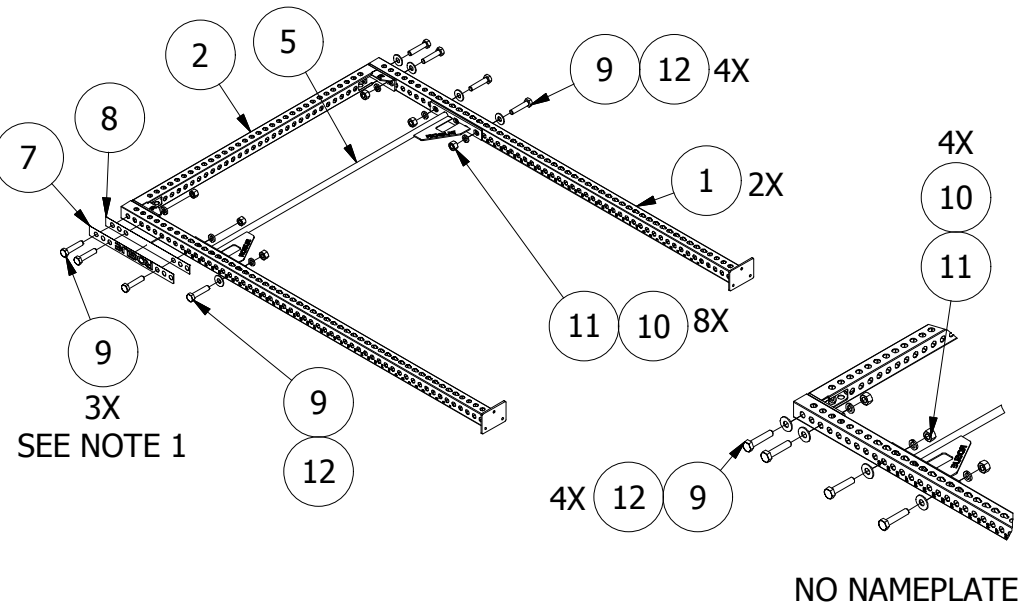
MISUSE OF THIS CAN RESULT IN
SEVERE INJURY

BOTH ROGUE FITNESS AND BUYER DISCLAIM ANY EXPRESS OR IMPLIED WARRANTY, INCLUDING, WITHOUT LIMITATION, WARRANTIES OR MERCHANTABILITY AND/OR FITNESS FOR A PARTICULAR PURPOSE WITH RESPECT TO THE EQUIPMENT. BUYER ASSUMES ALL LIABILITY IN USE OF EQUIPMENT.



Rogue Fitness
1080 Steelwood Rd.
Columbus, Ohio 43212
614-358-6190
TEAM@Roguefitness.com

ROGUE FITNESS MONSTER 2.0 M-10 RIG



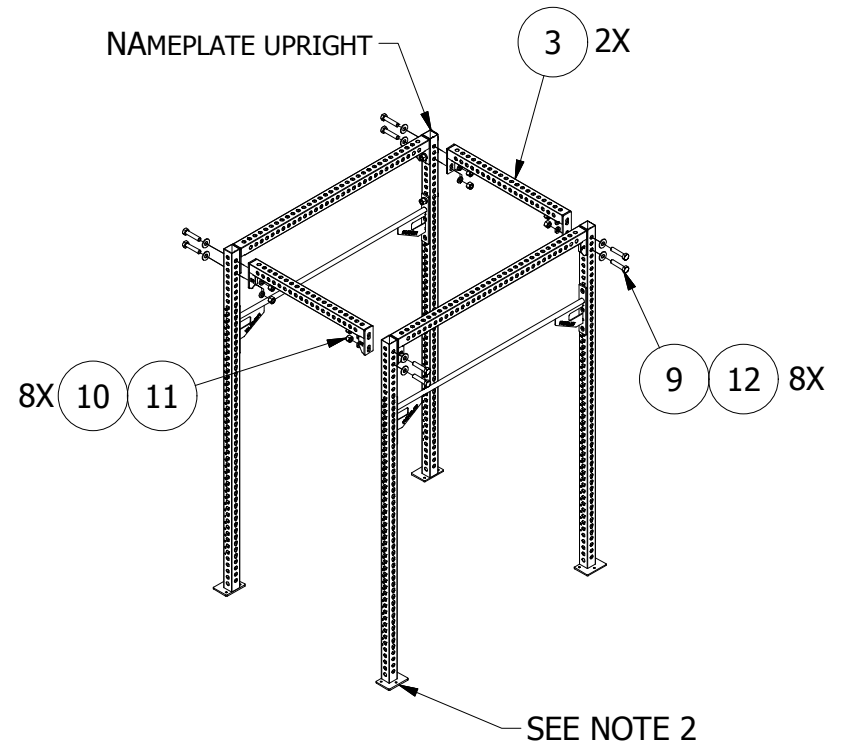
STEP 1:

BUILD FRAME USING ITEM # 1, 2, 5. SECURE USING 1"x4.75" BOLTS, 1" FLAT WASHERS, 1" LOCK WASHERS, AND 1" HEX NUTS.

- *DO NOT FULLY TIGHTEN HARDWARE UNTIL ENTIRE RIG IS ASSEMBLED
- *BUILD (2) FRAMES WITH NAMEPLATES AND (1) WITHOUT.

NOTE 1:

THE NAMEPLATE ACTS AS THE FLAT WASHER. ANY BOLTS USED TO MOUNT NAMEPLATE WILL NOT USE A FLAT WASHER.



STEP 2:

BUILD CAGE USING (1) NAMEPLATE FRAME AND (1) WITHOUT NAMEPLATE. CONNECT WITH ITEM # 3. SECURE USING 1" x 4.75" HEX BOLTS, 1" FLAT WASHERS, 1" LOCK WASHER, 1" HEX NUTS.

NOTE 2:

ENSURE FEET FACE OUT IN EACH 43" SECTION

DISCLAIMER

Resistance training, gymnastics training, and activities at height are potentially dangerous and may lead to severe injury or even death. Use common sense when training, to obtain instruction in the proper execution of movements, and understand your limitations. This equipment must only be used by competent and responsible persons, or under the direct and visual control of a competent and responsible person. Obtaining instruction in appropriate techniques and methods of use is your own responsibility. You assume all risks and responsibilities for all damage, injury or death which may occur during or following incorrect use of this equipment in any matter whatsoever. Rogue Fitness bears no liability beyond the replacement value of the equipment in question.



WARNING!

MISUSE OF THIS CAN RESULT IN SEVERE INJURY

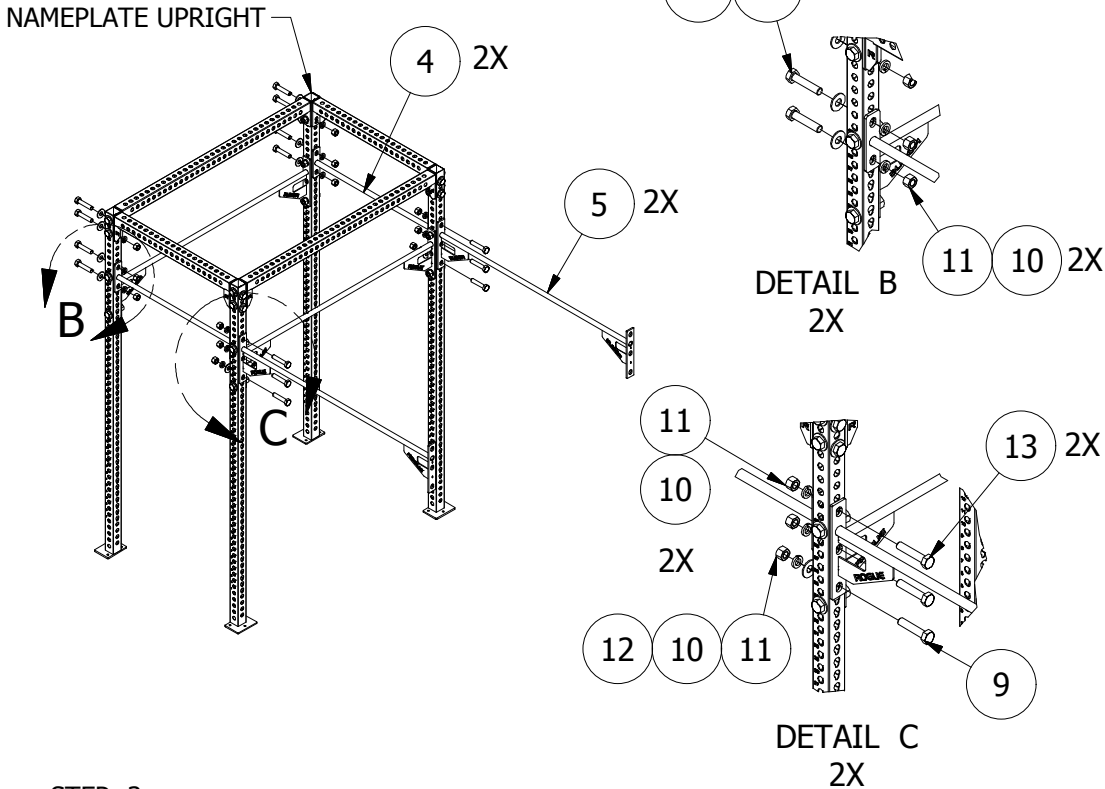
BOTH ROGUE FITNESS AND BUYER DISCLAIM ANY EXPRESS OR IMPLIED WARRANTY, INCLUDING, WITHOUT LIMITATION, WARRANTIES OR MERCHANTABILITY AND/OR FITNESS FOR A PARTICULAR PURPOSE WITH RESPECT TO THE EQUIPMENT. BUYER ASSUMES ALL LIABILITY IN USE OF EQUIPMENT.



Rogue Fitness
1080 Steelwood Rd.
Columbus, Ohio 43212
614-358-6190
TEAM@Roguefitness.com

ROGUE FITNESS

MONSTER 2.0 M-10 RIG

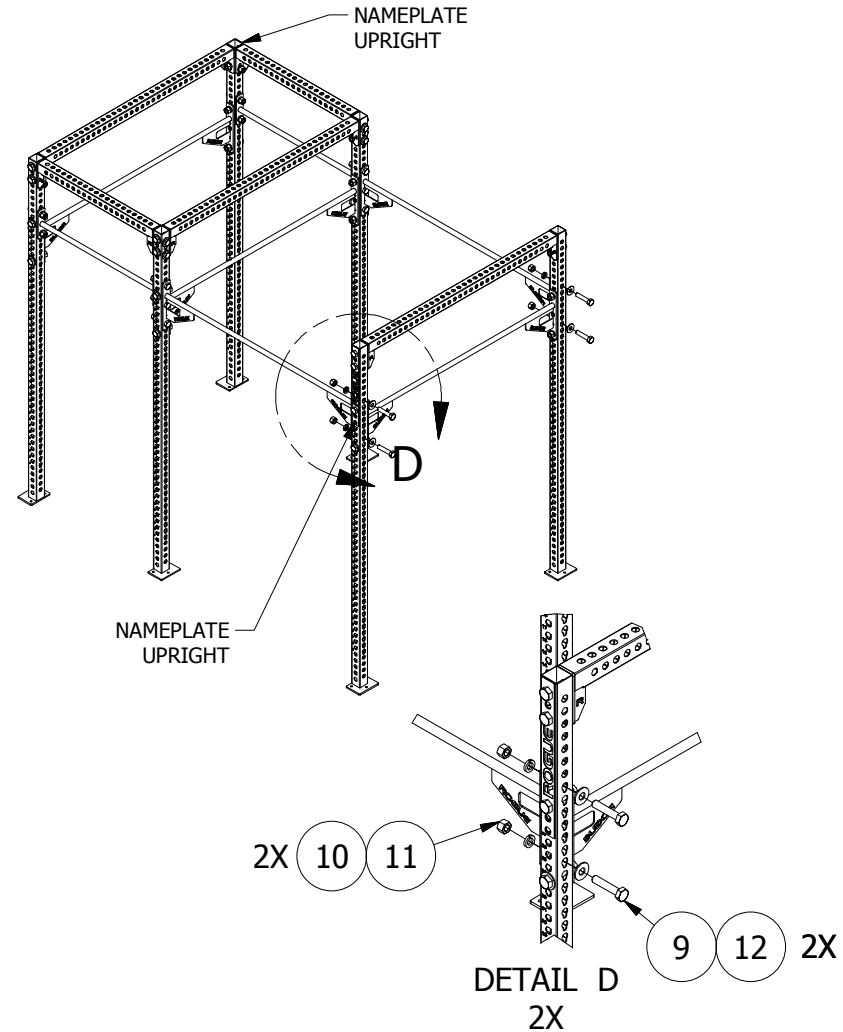


STEP: 3
 ATTACH 43" & 70" PULL-UP BARS, ITEM # 4 & 5. SECURE USING 1"x4.75" HEX BOLTS, 1"x5" HEX BOLTS, 1" FLAT WASHERS, 1" LOCK WASHERS, 1" HEX BOLTS.

NOTE 3:
 ANY HEX BOLT SHARED BETWEEN 43" SINGLE PULL-UP BAR, ITEM #4, & 70" SINGLE PULL-UP BAR, ITEM #5, WILL NOT RECEIVE A FLAT WASHER.

DISCLAIMER

Resistance training, gymnastics training, and activities at height are potentially dangerous and may lead to severe injury or even death. Use common sense when training, to obtain instruction in the proper execution of movements, and understand your limitations. This equipment must only be used by competent and responsible persons, or under the direct and visual control of a competent and responsible person. Obtaining instruction in appropriate techniques and methods of use is your own responsibility. You assume all risks and responsibilities for all damage, injury or death which may occur during or following incorrect use of this equipment in any matter whatsoever. Rogue Fitness bears no liability beyond the replacement value of the equipment in question.



STEP 4:
 ATTACH REMAINING FRAME WITH NAMEPLATE TO RIG. SECURE USING 1"x4.75" HEX BOLT, 1" FLAT WASHERS, 1" LOCK WASHERS, 1" HEX NUTS.

*FULLY TIGHTEN ALL HARDWARE



WARNING!

MISUSE OF THIS CAN RESULT IN SEVERE INJURY

BOTH ROGUE FITNESS AND BUYER DISCLAIM ANY EXPRESS OR IMPLIED WARRANTY, INCLUDING, WITHOUT LIMITATION, WARRANTIES OR MERCHANTABILITY AND/OR FITNESS FOR A PARTICULAR PURPOSE WITH RESPECT TO THE EQUIPMENT. BUYER ASSUMES ALL LIABILITY IN USE OF EQUIPMENT.



Rogue Fitness
 1080 Steelwood Rd.
 Columbus, Ohio 43212
 614-358-6190
 TEAM@Roguefitness.com