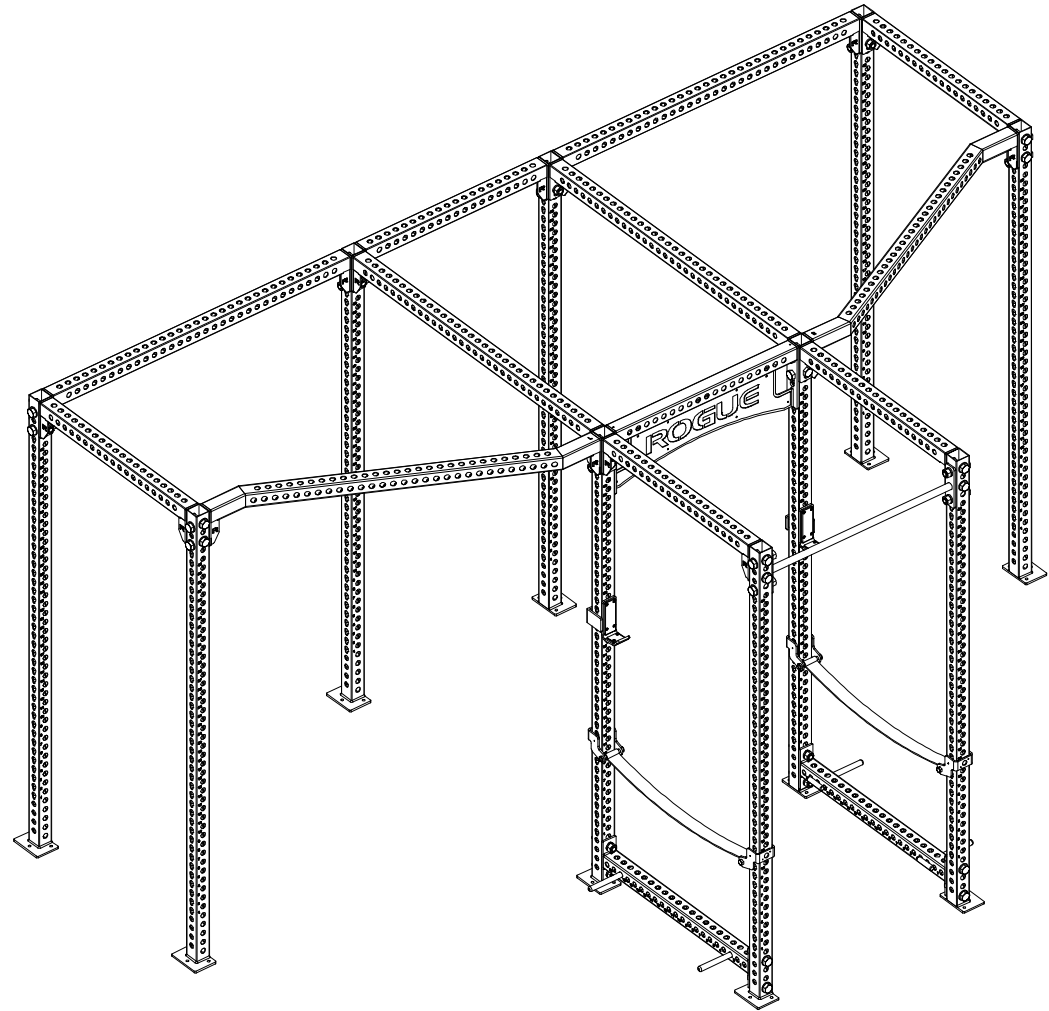


WINGSPAN RIG



DISCLAIMER

Resistance training, gymnastics training, and activities at height are potentially dangerous and may lead to severe injury or even death. Use common sense when training, to obtain instruction in the proper execution of movements, and understand your limitations. This equipment must only be used by competent and responsible persons, or under the direct and visual control of a competent and responsible person. Obtaining instruction in appropriate techniques and methods of use is your own responsibility. You assume all risks and responsibilities for all damage, injury or death which may occur during or following incorrect use of this equipment in any matter whatsoever. Rogue Fitness bears no liability beyond the replacement value of the equipment in question.



MISUSE OF THIS CAN RESULT IN SEVERE INJURY

BOTH ROGUE FITNESS AND BUYER DISCLAIM ANY EXPRESS OR IMPLIED WARRANTY, INCLUDING, WITHOUT LIMITATION, WARRANTIES OR MERCHANTABILITY AND/OR FITNESS FOR A PARTICULAR PURPOSE WITH RESPECT TO THE EQUIPMENT. BUYER ASSUMES ALL LIABILITY IN USE OF EQUIPMENT.



Rogue Fitness
545 E 5th Ave.
Columbus, Ohio 43201
614-358-6190
team@roguefitness.com

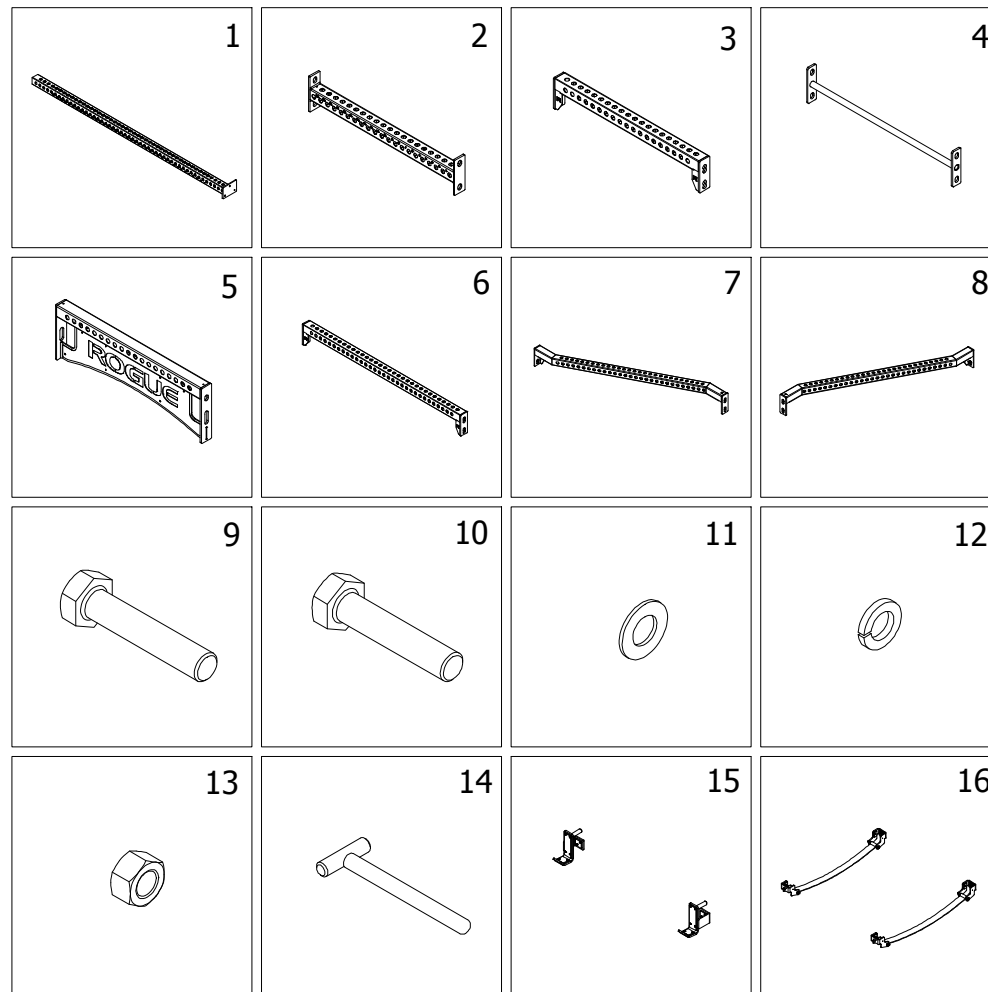
ROGUE

WINGSPAN RIG

INCLUDED PARTS
 *NOTE: IMAGES NOT SHOWN TO SCALE

PARTS LIST		
ITEM	QTY	DESCRIPTION
1	10	MONSTER 100" LEG
2	2	MONSTER 43" BOTTOM CROSSMEMBER
3	5	MONSTER 43" TOP CROSSMEMBER
4	1	43" SKINNY PULL-UP BAR
5	1	MONSTER NAMEPLATE CROSSMEMBER
6	4	MONSTER 70" TOP CROSSMEMBER
7	1	MONSTER ANGLED BEAM - RH
8	1	MONSTER ANGLED BEAM - LH
9	12	1" x 5" HEX BOLT
10	36	1" x 4.75" HEX BOLT
11	36 *	1" FLAT WASHER
12	48	1" LOCK WASHER
13	48	1" HEX NUT
14	4	BAND PEG
15	1	MONSTER J-CUP PAIR
16	1	MONSTER 43" STRAP SAFETY SET

*44 1" FLAT WASHERS INCLUDED IN KIT, 8 OF WHICH ARE NOT REQUIRED AND CAN BE DISCARDED



DISCLAIMER

Resistance training, gymnastics training, and activities at height are potentially dangerous and may lead to severe injury or even death. Use common sense when training, to obtain instruction in the proper execution of movements, and understand your limitations. This equipment must only be used by competent and responsible persons, or under the direct and visual control of a competent and responsible person. Obtaining instruction in appropriate techniques and methods of use is your own responsibility. You assume all risks and responsibilities for all damage, injury or death which may occur during or following incorrect use of this equipment in any matter whatsoever. Rogue Fitness bears no liability beyond the replacement value of the equipment in question.



WARNING!



MISUSE OF THIS CAN RESULT IN SEVERE INJURY

BOTH ROGUE FITNESS AND BUYER DISCLAIM ANY EXPRESS OR IMPLIED WARRANTY, INCLUDING, WITHOUT LIMITATION, WARRANTIES OR MERCHANTABILITY AND/OR FITNESS FOR A PARTICULAR PURPOSE WITH RESPECT TO THE EQUIPMENT. BUYER ASSUMES ALL LIABILITY IN USE OF EQUIPMENT.



Rogue Fitness
 545 E 5th Ave.
 Columbus, Ohio 43201
 614-358-6190
 team@roguefitness.com

STEP 1:

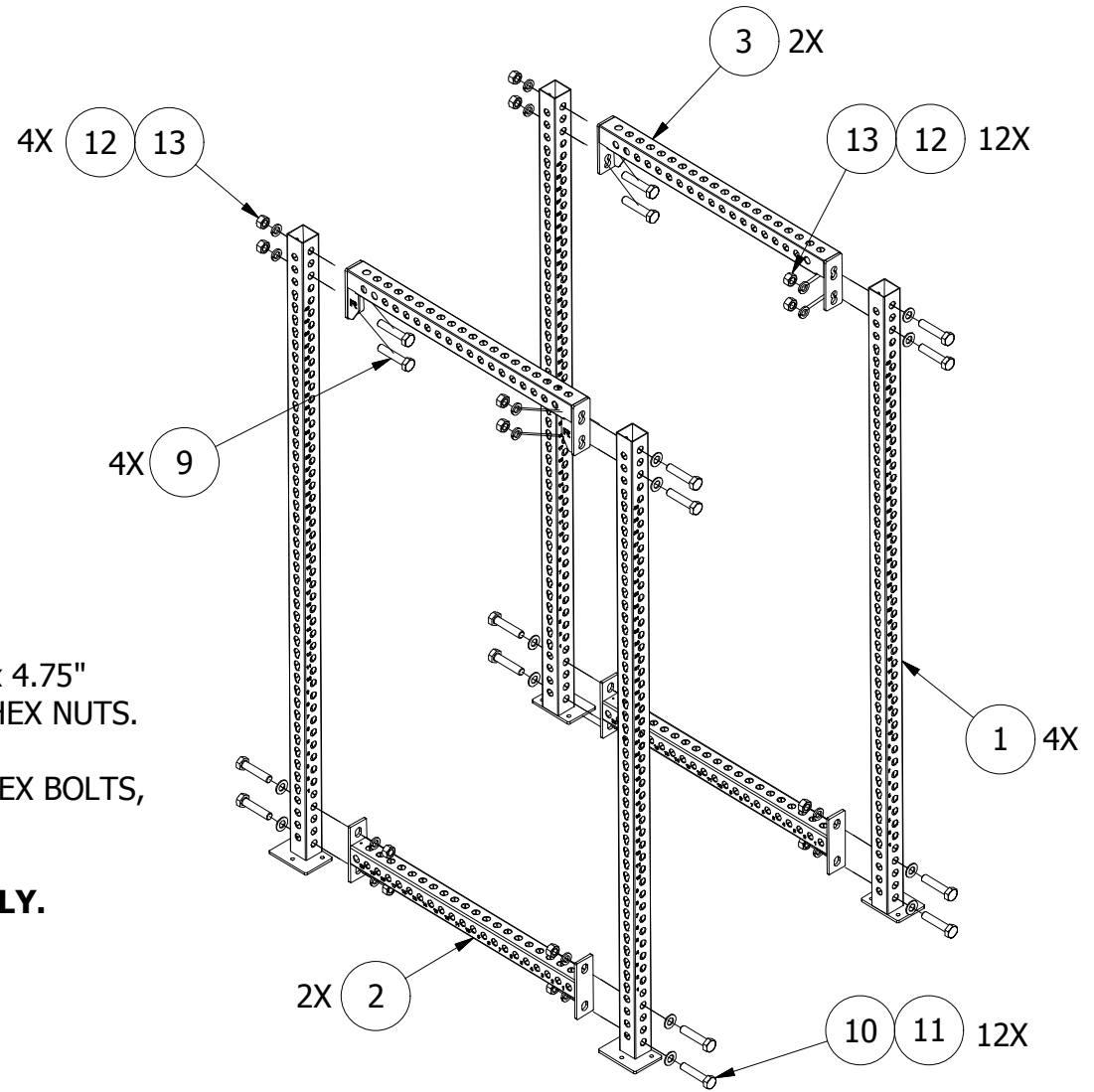
BUILD RACK SIDE FRAMES USING ITEMS 1, 2, 3.

FOR THE LOWER AND UPPER FRONT CONNECTIONS USE 1" x 4.75" HEX BOLTS, 1" FLAT WASHERS, 1" LOCK WASHERS, AND 1" HEX NUTS.

FOR THE UPPER REAR CONNECTION ATTACH WITH 1" x 5" HEX BOLTS, 1" LOCK WASHER AND 1" HEX NUTS.

***NOTE ORIENTATION OF BOLTS FOR EASE OF ASSEMBLY.**

***DO NOT FULLY TIGHTEN HARDWARE.**



DISCLAIMER

Resistance training, gymnastics training, and activities at height are potentially dangerous and may lead to severe injury or even death. Use common sense when training, to obtain instruction in the proper execution of movements, and understand your limitations. This equipment must only be used by competent and responsible persons, or under the direct and visual control of a competent and responsible person. Obtaining instruction in appropriate techniques and methods of use is your own responsibility. You assume all risks and responsibilities for all damage, injury or death which may occur during or following incorrect use of this equipment in any matter whatsoever. Rogue Fitness bears no liability beyond the replacement value of the equipment in question.



MISUSE OF THIS CAN RESULT IN SEVERE INJURY

BOTH ROGUE FITNESS AND BUYER DISCLAIM ANY EXPRESS OR IMPLIED WARRANTY, INCLUDING, WITHOUT LIMITATION, WARRANTIES OR MERCHANTABILITY AND/OR FITNESS FOR A PARTICULAR PURPOSE WITH RESPECT TO THE EQUIPMENT. BUYER ASSUMES ALL LIABILITY IN USE OF EQUIPMENT.



Rogue Fitness
 545 E 5th Ave.
 Columbus, Ohio 43201
 614-358-6190
 team@roguefitness.com

STEP 2:

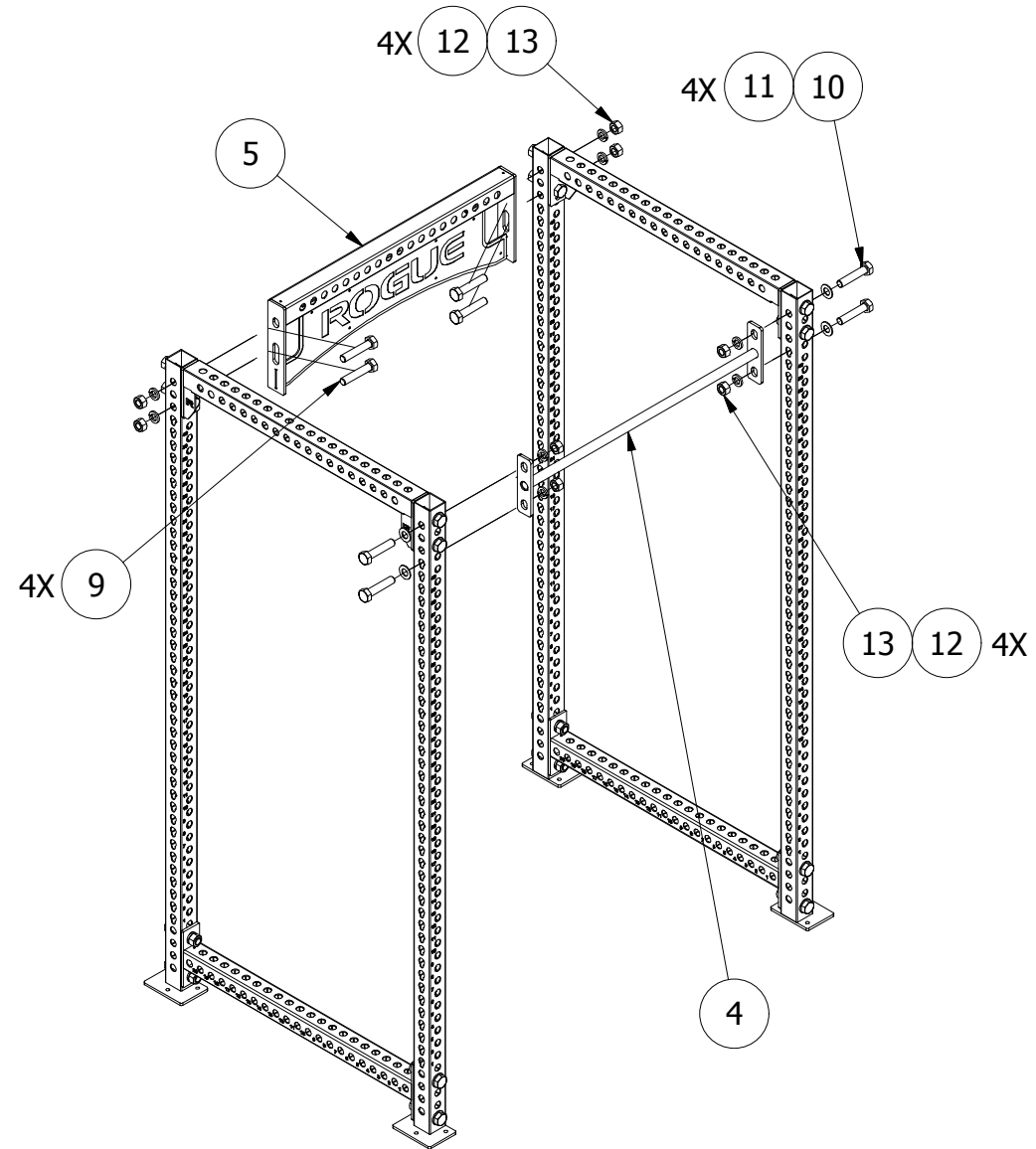
ATTACH NAMEPLATE CROSSMEMBER (ITEM 5) AND SINGLE PULL UP BAR (ITEM 4) TO THE RACK SIDE FRAMES.

ATTACH THE PULL UP BAR WITH 1" x 4.75" HEX BOLTS, 1" FLAT WASHERS, 1" LOCK WASHERS, 1" HEX NUTS.

ATTACH THE NAMEPLATE WITH 1" x 5" HEX BOLTS, 1" LOCK WASHERS, AND 1" HEX NUTS.

***NOTE ORIENTATION OF BOLTS FOR EASE OF ASSEMBLY.**

***DO NOT FULLY TIGHTEN HARDWARE.**



DISCLAIMER

Resistance training, gymnastics training, and activities at height are potentially dangerous and may lead to severe injury or even death. Use common sense when training, to obtain instruction in the proper execution of movements, and understand your limitations. This equipment must only be used by competent and responsible persons, or under the direct and visual control of a competent and responsible person. Obtaining instruction in appropriate techniques and methods of use is your own responsibility. You assume all risks and responsibilities for all damage, injury or death which may occur during or following incorrect use of this equipment in any matter whatsoever. Rogue Fitness bears no liability beyond the replacement value of the equipment in question.



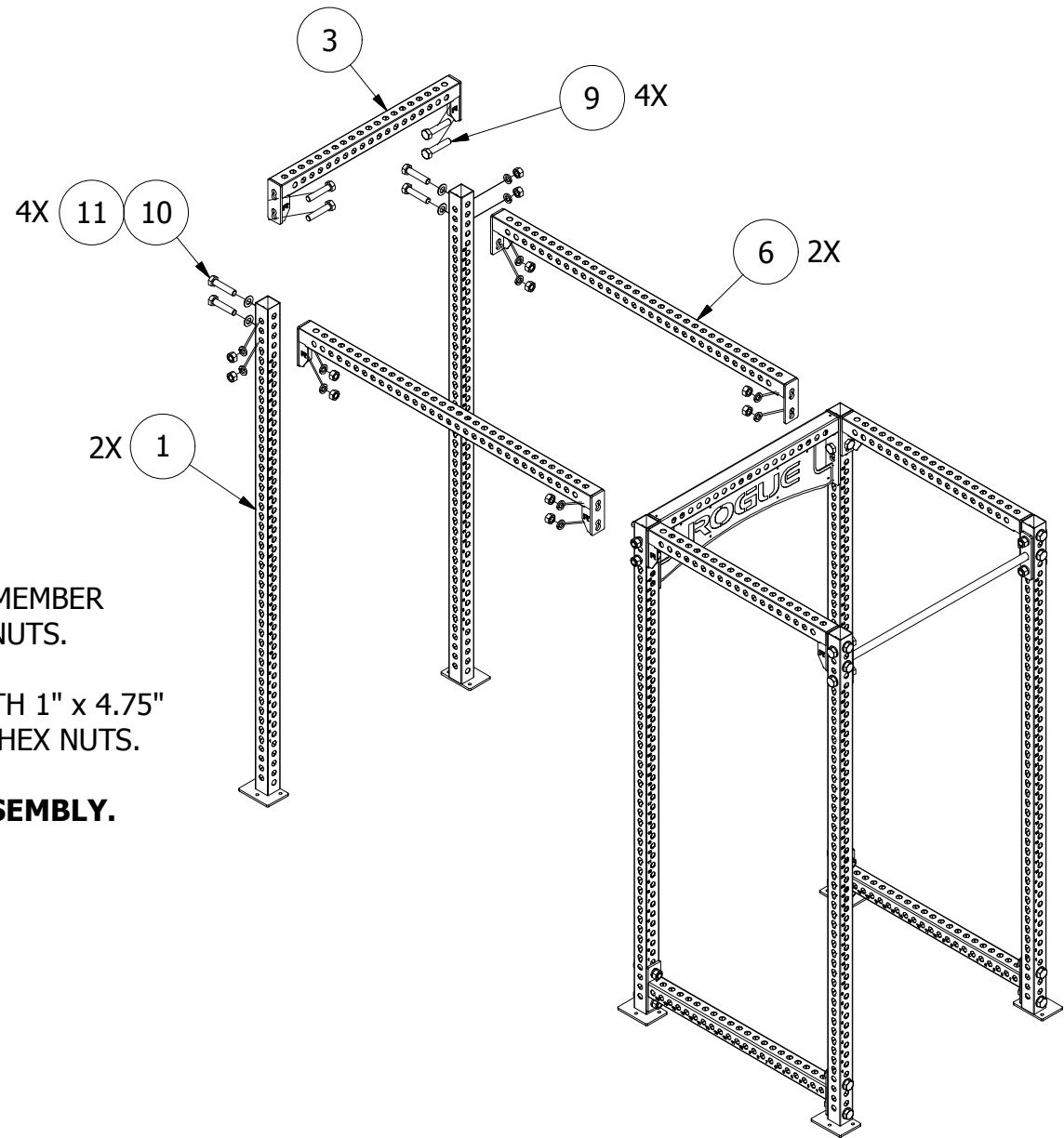
WARNING!

MISUSE OF THIS CAN RESULT IN SEVERE INJURY

BOTH ROGUE FITNESS AND BUYER DISCLAIM ANY EXPRESS OR IMPLIED WARRANTY, INCLUDING, WITHOUT LIMITATION, WARRANTIES OR MERCHANTABILITY AND/OR FITNESS FOR A PARTICULAR PURPOSE WITH RESPECT TO THE EQUIPMENT. BUYER ASSUMES ALL LIABILITY IN USE OF EQUIPMENT.

R

Rogue Fitness
545 E 5th Ave.
Columbus, Ohio 43201
614-358-6190
team@roguefitness.com



STEP 3:

ATTACH 70" REAR SECTION USING ITEMS 1, 3, 6.

FOR THE RACK SIDE CONNECTION ATTACH 70" CROSSMEMBER WITH PRE-INSTALLED 1" LOCK WASHERS AND 1" HEX NUTS.

ATTACH REAR SECTION IN ARRANGEMENT SHOWN WITH 1" x 4.75" HEX BOLTS, 1" x 5" HEX BOLTS, 1" LOCK WASHERS, 1" HEX NUTS.

***NOTE ORIENTATION OF BOLTS FOR EASE OF ASSEMBLY.**

***DO NOT FULLY TIGHTEN HARDWARE.**

DISCLAIMER

Resistance training, gymnastics training, and activities at height are potentially dangerous and may lead to severe injury or even death. Use common sense when training, to obtain instruction in the proper execution of movements, and understand your limitations. This equipment must only be used by competent and responsible persons, or under the direct and visual control of a competent and responsible person. Obtaining instruction in appropriate techniques and methods of use is your own responsibility. You assume all risks and responsibilities for all damage, injury or death which may occur during or following incorrect use of this equipment in any matter whatsoever. Rogue Fitness bears no liability beyond the replacement value of the equipment in question.



WARNING!

MISUSE OF THIS CAN RESULT IN SEVERE INJURY

BOTH ROGUE FITNESS AND BUYER DISCLAIM ANY EXPRESS OR IMPLIED WARRANTY, INCLUDING, WITHOUT LIMITATION, WARRANTIES OR MERCHANTABILITY AND/OR FITNESS FOR A PARTICULAR PURPOSE WITH RESPECT TO THE EQUIPMENT. BUYER ASSUMES ALL LIABILITY IN USE OF EQUIPMENT.

R

Rogue Fitness
545 E 5th Ave.
Columbus, Ohio 43201
614-358-6190
team@roguefitness.com

STEP 4:

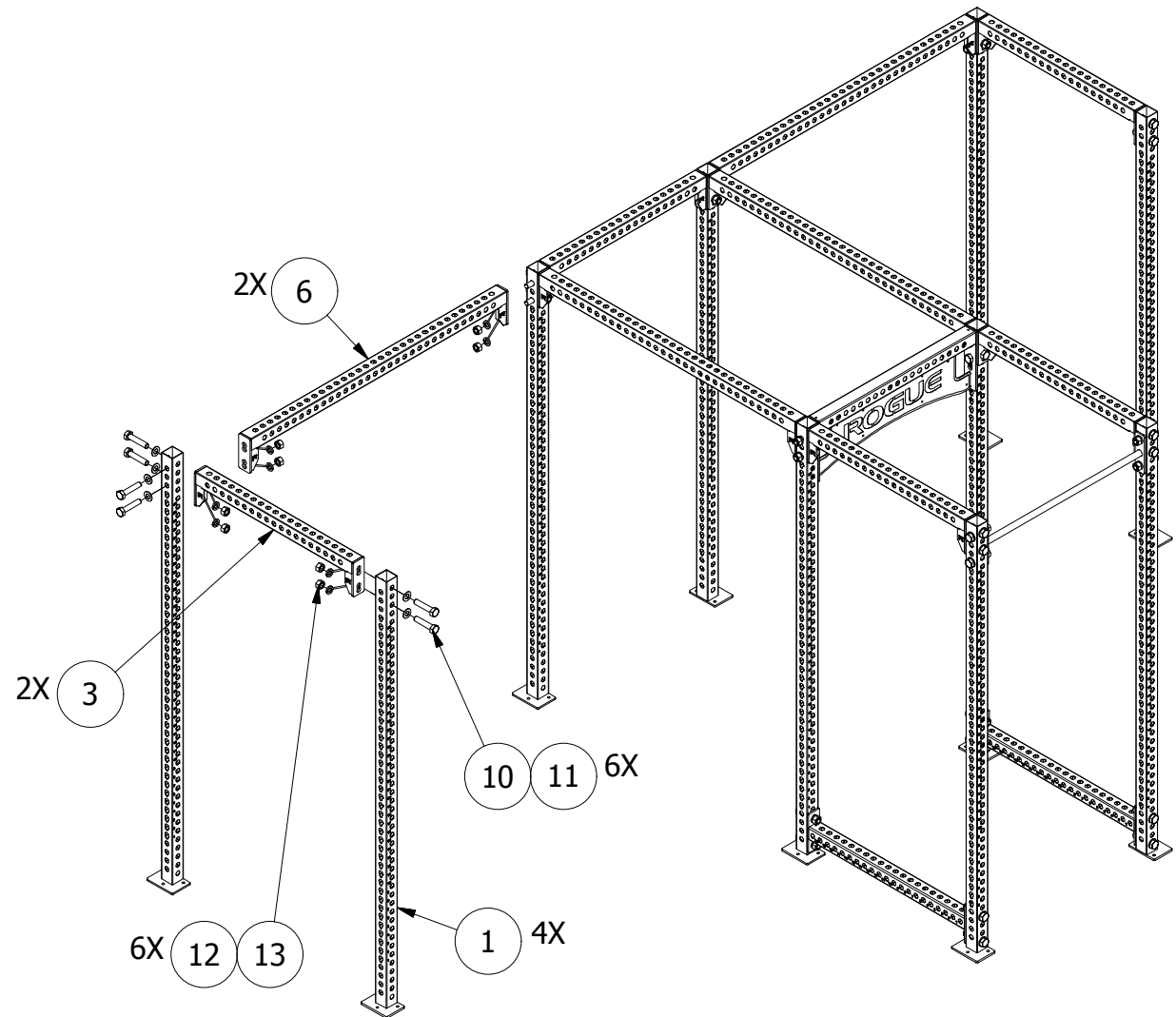
ATTACH 43" SIDE FRAMES (ITEMS 1, 3) AND 70" CROSSMEMBERS (ITEM 6) TO EACH SIDE OF THE 70" REAR SECTION.

FOR THE CONNECTION TO THE 70" REAR SECTION USE THE PRE-INSTALLED 1" LOCK WASHER AND 1" HEX NUTS.

ALL OTHER CONNECTIONS USE 1" x 4.75" HEX BOLTS, 1" FLAT WASHER, 1" LOCK WASHERS AND 1" HEX NUTS.

***NOTE ORIENTATION OF BOLTS FOR EASE OF ASSEMBLY.**

***DO NOT FULLY TIGHTEN HARDWARE.**



DISCLAIMER

Resistance training, gymnastics training, and activities at height are potentially dangerous and may lead to severe injury or even death. Use common sense when training, to obtain instruction in the proper execution of movements, and understand your limitations. This equipment must only be used by competent and responsible persons, or under the direct and visual control of a competent and responsible person. Obtaining instruction in appropriate techniques and methods of use is your own responsibility. You assume all risks and responsibilities for all damage, injury or death which may occur during or following incorrect use of this equipment in any matter whatsoever. Rogue Fitness bears no liability beyond the replacement value of the equipment in question.



WARNING!

MISUSE OF THIS CAN RESULT IN SEVERE INJURY

BOTH ROGUE FITNESS AND BUYER DISCLAIM ANY EXPRESS OR IMPLIED WARRANTY, INCLUDING, WITHOUT LIMITATION, WARRANTIES OR MERCHANTABILITY AND/OR FITNESS FOR A PARTICULAR PURPOSE WITH RESPECT TO THE EQUIPMENT. BUYER ASSUMES ALL LIABILITY IN USE OF EQUIPMENT.

R

Rogue Fitness
545 E 5th Ave.
Columbus, Ohio 43201
614-358-6190
team@roguefitness.com

ROGUE

WINGSPAN RIG

STEP 5:

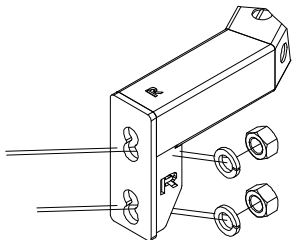
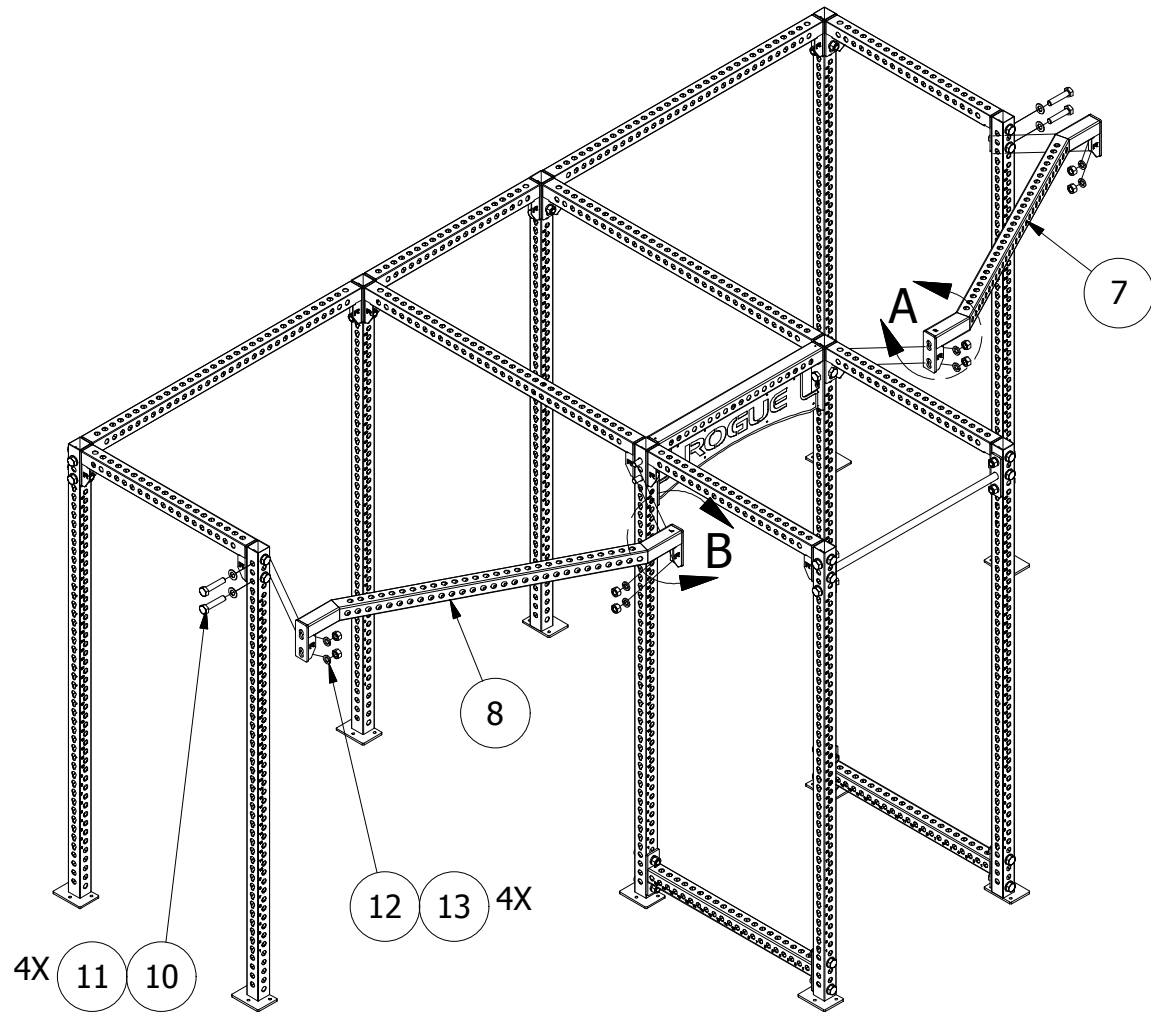
ATTACH THE ANGLED BEAMS (ITEMS 7 & 8) TO CONNECT THE END FRAME TO THE RACK SECTION.

AS SHOWN THE ANGLED BEAMS ARE MARKED "R" (RIGHT) AND "L" (LEFT), INSTALLED AS SHOWN. (SEE DETAIL A & B)

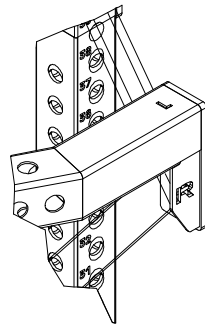
FOR THE RACK SIDE CONNECTION USE THE PRE-INSTALLED 1" LOCK WASHERS AND 1" HEX NUTS.

FOR THE OUTSIDE CONNECTION USE 1" x 4.75" HEX BOLT, 1" FLAT WASHER, 1" LOCK WASHERS AND 1" HEX NUT.

***ENSURE RIG IS SET IN THE FINAL LOCATION AND FULLY TIGHTEN ALL HARDWARE**



DETAIL A



DETAIL B

DISCLAIMER

Resistance training, gymnastics training, and activities at height are potentially dangerous and may lead to severe injury or even death. Use common sense when training, to obtain instruction in the proper execution of movements, and understand your limitations. This equipment must only be used by competent and responsible persons, or under the direct and visual control of a competent and responsible person. Obtaining instruction in appropriate techniques and methods of use is your own responsibility. You assume all risks and responsibilities for all damage, injury or death which may occur during or following incorrect use of this equipment in any matter whatsoever. Rogue Fitness bears no liability beyond the replacement value of the equipment in question.



WARNING!



MISUSE OF THIS CAN RESULT IN SEVERE INJURY

BOTH ROGUE FITNESS AND BUYER DISCLAIM ANY EXPRESS OR IMPLIED WARRANTY, INCLUDING, WITHOUT LIMITATION, WARRANTIES OR MERCHANTABILITY AND/OR FITNESS FOR A PARTICULAR PURPOSE WITH RESPECT TO THE EQUIPMENT. BUYER ASSUMES ALL LIABILITY IN USE OF EQUIPMENT.



Rogue Fitness
545 E 5th Ave.
Columbus, Ohio 43201
614-358-6190
team@roguefitness.com