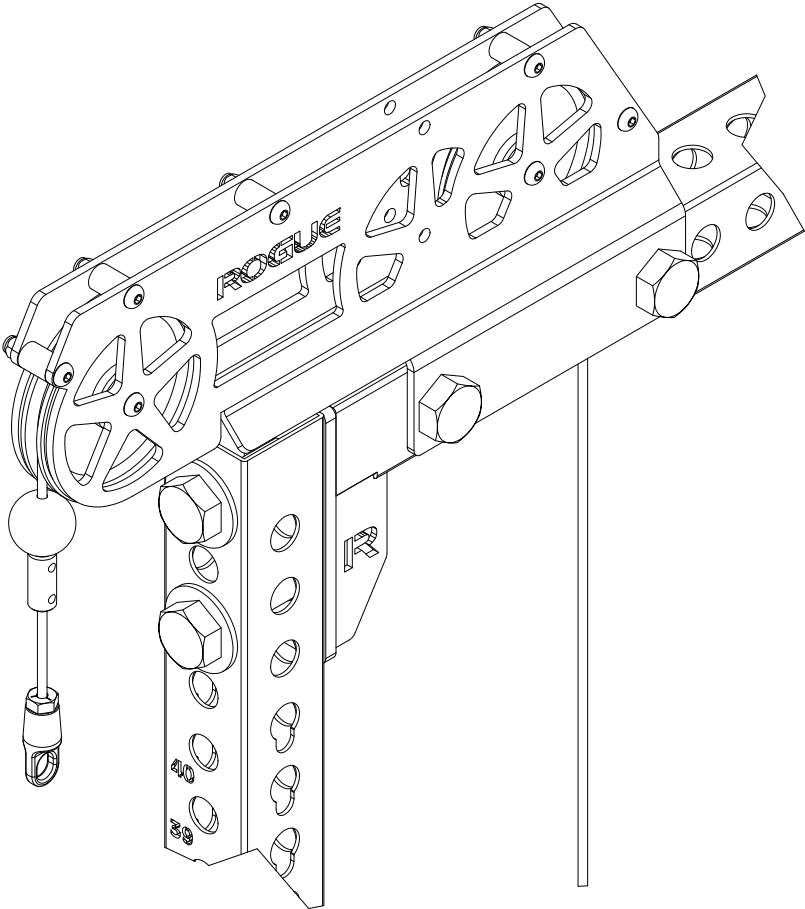


MONSTER SLINGER

TOOLS REQUIRED

- (2) 1-1/2" WRENCH
- (1) 9/16" WRENCH
- (1) 7/32 HEX SOCKET KEY



DISCLAIMER

Resistance training, gymnastics training, and activities at height are potentially dangerous and may lead to severe injury or even death. Use common sense when training, to obtain instruction in the proper execution of movements, and understand your limitations. This equipment must only be used by competent and responsible persons, or under the direct and visual control of a competent and responsible person. Obtaining instruction in appropriate techniques and methods of use is your own responsibility. You assume all risks and responsibilities for all damage, injury or death which may occur during or following incorrect use of this equipment in any matter whatsoever. Rogue Fitness bears no liability beyond the replacement value of the equipment in question.



WARNING!

MISUSE OF THIS CAN RESULT IN SEVERE INJURY

BOTH ROGUE FITNESS AND BUYER DISCLAIM ANY EXPRESS OR IMPLIED WARRANTY, INCLUDING, WITHOUT LIMITATION, WARRANTIES OR MERCHANTABILITY AND/OR FITNESS FOR A PARTICULAR PURPOSE WITH RESPECT TO THE EQUIPMENT. BUYER ASSUMES ALL LIABILITY IN USE OF EQUIPMENT.



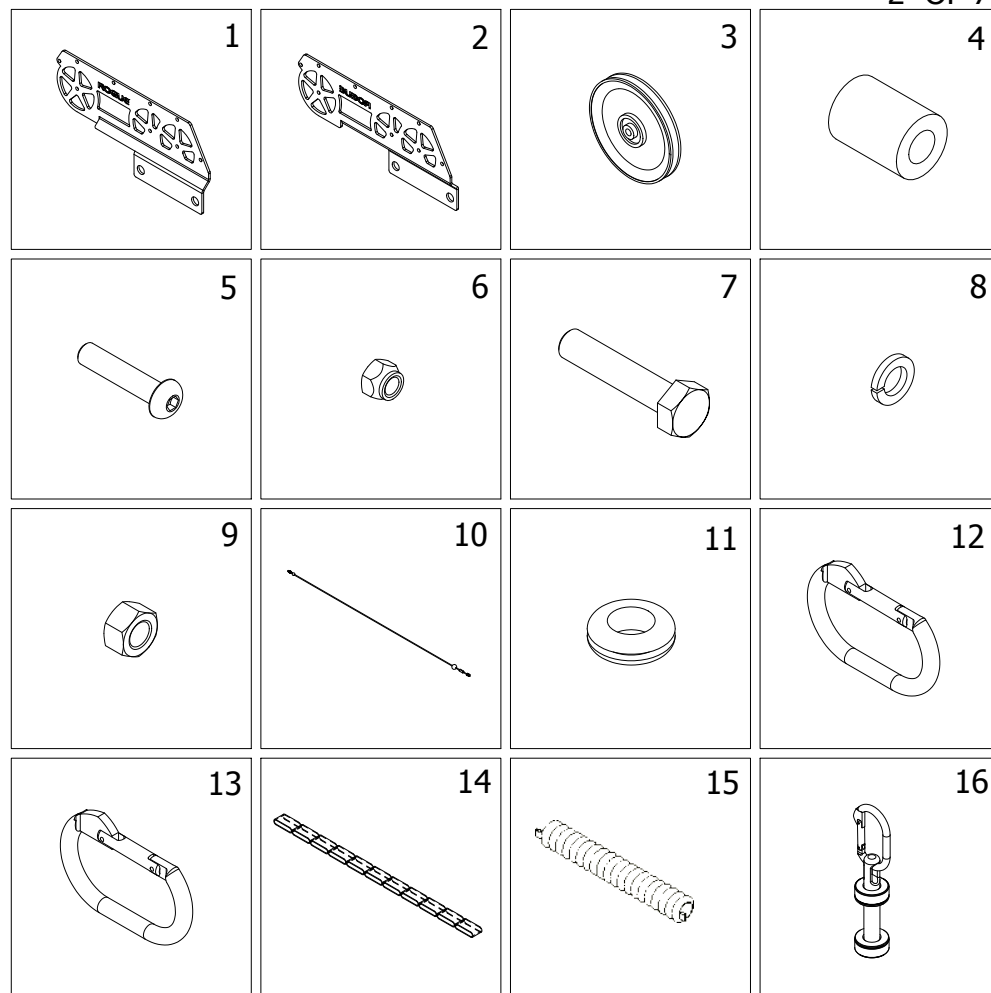
Rogue Fitness
545 E 5th Ave.
Columbus, Ohio 43201
614-358-6190
team@roguefitness.com

ROGUE

SLINGER

PARTS LIST

ITEM	QTY	DESCRIPTION
1	1	SLINGER SIDE PLATE - RH
2	1	SLINGER SIDE PLATE - LH
3	2	6" CABLE PULLEY
4	5	3/8" I.D. x 1" SPACER
5	7	3/8" x 1-3/4" SOCKET HEAD SCREW
6	7	3/8" NYLOC NUT
7	2	1" x 4.75" HEX BOLT
8	2	1" LOCK WASHER
9	2	1" HEX NUT
10	1	SLINGER CABLE
11	2	RUBBER GROMMET
12	2	SILVER CARABINER
13	1	BLACK CARABINER
14	1	SLINGER EXTENSION STRAP
15	1	SLINGER BAND SHEATH
16	1	MONSTER ATTACHMENT POST



DISCLAIMER

Resistance training, gymnastics training, and activities at height are potentially dangerous and may lead to severe injury or even death. Use common sense when training, to obtain instruction in the proper execution of movements, and understand your limitations. This equipment must only be used by competent and responsible persons, or under the direct and visual control of a competent and responsible person. Obtaining instruction in appropriate techniques and methods of use is your own responsibility. You assume all risks and responsibilities for all damage, injury or death which may occur during or following incorrect use of this equipment in any matter whatsoever. Rogue Fitness bears no liability beyond the replacement value of the equipment in question.



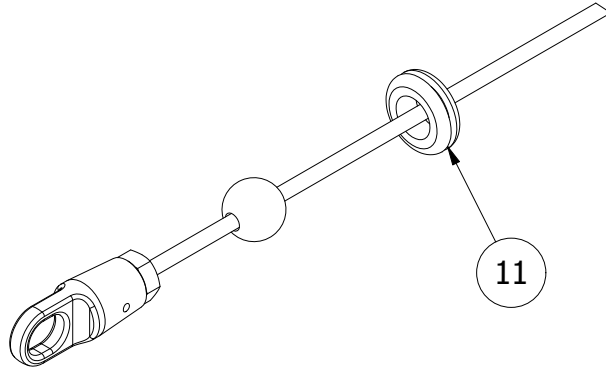
WARNING!

MISUSE OF THIS CAN RESULT IN SEVERE INJURY

BOTH ROGUE FITNESS AND BUYER DISCLAIM ANY EXPRESS OR IMPLIED WARRANTY, INCLUDING, WITHOUT LIMITATION, WARRANTIES OR MERCHANTABILITY AND/OR FITNESS FOR A PARTICULAR PURPOSE WITH RESPECT TO THE EQUIPMENT. BUYER ASSUMES ALL LIABILITY IN USE OF EQUIPMENT.

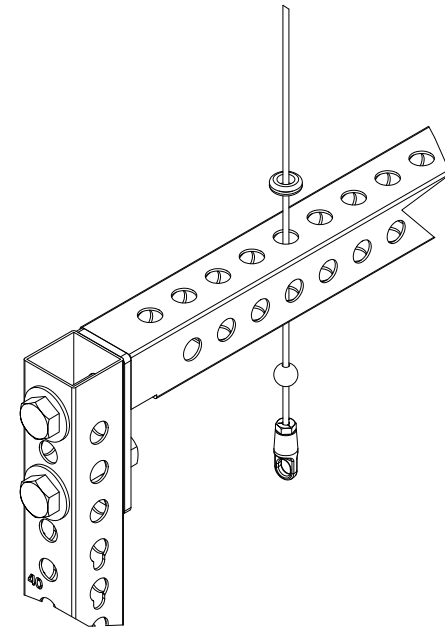


Rogue Fitness
 545 E 5th Ave.
 Columbus, Ohio 43201
 614-358-6190
 team@roguefitness.com



STEP 1

PASS (1) GROMMET OVER THE CLEVIS END AND 1" BALL STOP.



STEP 2:

PASS THE 1" BALL STOP SIDE OF THE CABLE THROUGH THE 5TH HOLE TOP CROSSMEMBER HOLE.

ENSURE THE RUBBER GROMMET STAYS ON THE TOP SIDE OF THE CROSSMEMEBER.

DISCLAIMER

Resistance training, gymnastics training, and activities at height are potentially dangerous and may lead to severe injury or even death. Use common sense when training, to obtain instruction in the proper execution of movements, and understand your limitations. This equipment must only be used by competent and responsible persons, or under the direct and visual control of a competent and responsible person. Obtaining instruction in appropriate techniques and methods of use is your own responsibility. You assume all risks and responsibilities for all damage, injury or death which may occur during or following incorrect use of this equipment in any matter whatsoever. Rogue Fitness bears no liability beyond the replacement value of the equipment in question.



MISUSE OF THIS CAN RESULT IN SEVERE INJURY

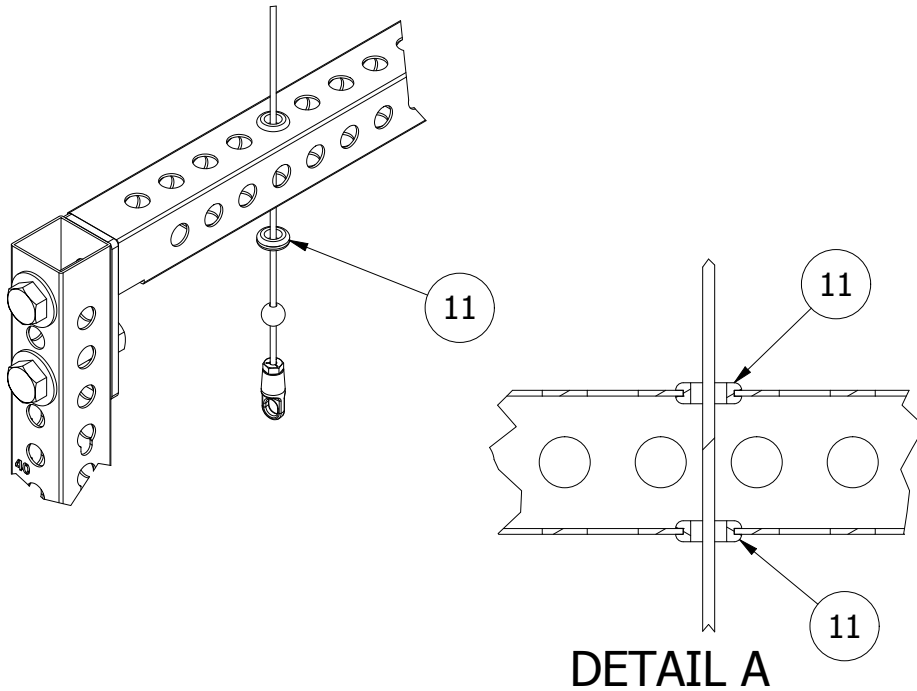
BOTH ROGUE FITNESS AND BUYER DISCLAIM ANY EXPRESS OR IMPLIED WARRANTY, INCLUDING, WITHOUT LIMITATION, WARRANTIES OR MERCHANTABILITY AND/OR FITNESS FOR A PARTICULAR PURPOSE WITH RESPECT TO THE EQUIPMENT. BUYER ASSUMES ALL LIABILITY IN USE OF EQUIPMENT.

R

Rogue Fitness
545 E 5th Ave.
Columbus, Ohio 43201
614-358-6190
team@roguefitness.com

ROGUE

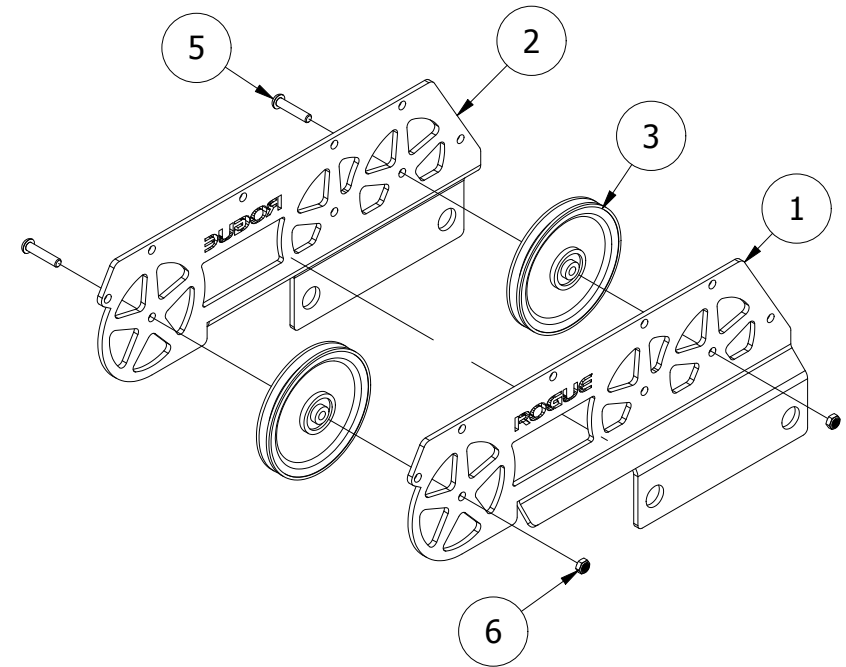
SLINGER



STEP 3:

PASS (1) GROMMET OVER THE CLEVIS END AND 1" BALL STOP.

SEAT TOP AND BOTTOM GROMMET INTO THE TOP CROSSMEMBER HOLES. SEE DETAIL A.



STEP 4:

ASSEMBLE THE SLINGER SIDE PLATES TO THE PULLEYS.

INSTALL THE REAR PULLEY IN THE REAR PLATE LOCATION AS SHOWN.

DO NOT FULLY TIGHTEN HARDWARE.

DISCLAIMER

Resistance training, gymnastics training, and activities at height are potentially dangerous and may lead to severe injury or even death. Use common sense when training, to obtain instruction in the proper execution of movements, and understand your limitations. This equipment must only be used by competent and responsible persons, or under the direct and visual control of a competent and responsible person. Obtaining instruction in appropriate techniques and methods of use is your own responsibility. You assume all risks and responsibilities for all damage, injury or death which may occur during or following incorrect use of this equipment in any matter whatsoever. Rogue Fitness bears no liability beyond the replacement value of the equipment in question.

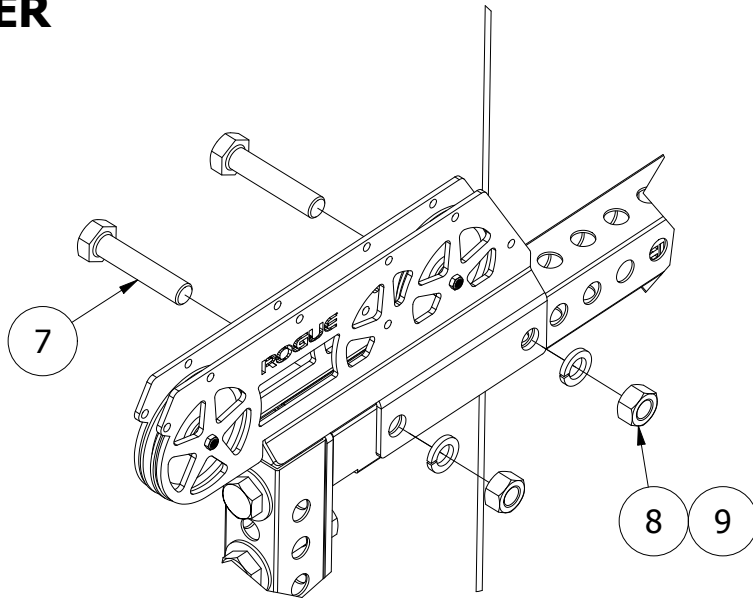


MISUSE OF THIS CAN RESULT IN
SEVERE INJURY

BOTH ROGUE FITNESS AND BUYER DISCLAIM ANY EXPRESS OR IMPLIED WARRANTY, INCLUDING, WITHOUT LIMITATION, WARRANTIES OR MERCHANTABILITY AND/OR FITNESS FOR A PARTICULAR PURPOSE WITH RESPECT TO THE EQUIPMENT. BUYER ASSUMES ALL LIABILITY IN USE OF EQUIPMENT.

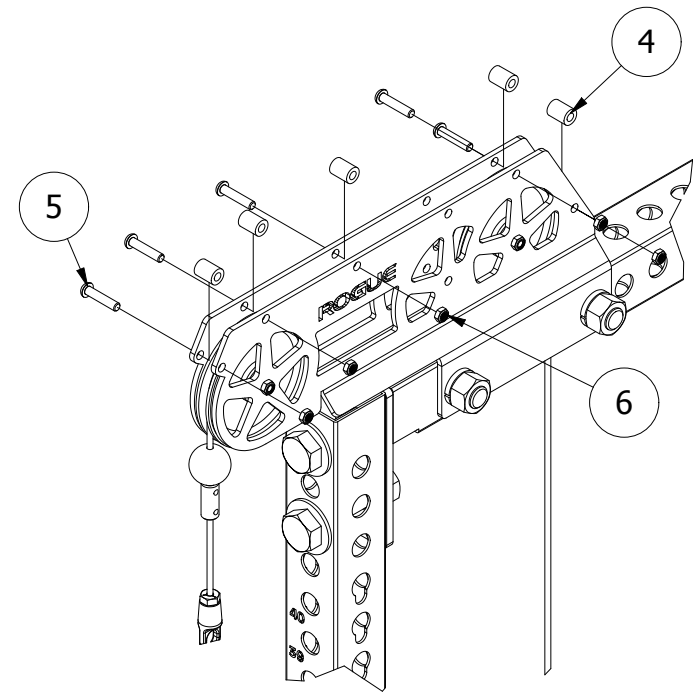
R

Rogue Fitness
545 E 5th Ave.
Columbus, Ohio 43201
614-358-6190
team@roguefitness.com



STEP 5:
ASSEMBLE SLINGER FRAME TO THE TOP OF THE RACK
AS SHOWN.

DO NOT FULLY TIGHTEN HARDWARE.



STEP 6:
LAY THE CABLE OVER THE PULLEYS AS SHOWN.

INSTALL PLASTIC SPACERS OVER CABLE WITH
3/8" HARDWARE.

NOTE: CABLE SHOULD RUN OVER PULLEYS BUT
UNDER PLASTIC SPACERS.

TIGHTEN ALL 1" AND 3/8" HARDWARE.

DISCLAIMER

Resistance training, gymnastics training, and activities at height are potentially dangerous and may lead to severe injury or even death. Use common sense when training, to obtain instruction in the proper execution of movements, and understand your limitations. This equipment must only be used by competent and responsible persons, or under the direct and visual control of a competent and responsible person. Obtaining instruction in appropriate techniques and methods of use is your own responsibility. You assume all risks and responsibilities for all damage, injury or death which may occur during or following incorrect use of this equipment in any matter whatsoever. Rogue Fitness bears no liability beyond the replacement value of the equipment in question.



WARNING!



MISUSE OF THIS CAN RESULT IN
SEVERE INJURY

BOTH ROGUE FITNESS AND BUYER DISCLAIM ANY EXPRESS OR IMPLIED WARRANTY, INCLUDING, WITHOUT LIMITATION, WARRANTIES OR MERCHANTABILITY AND/OR FITNESS FOR A PARTICULAR PURPOSE WITH RESPECT TO THE EQUIPMENT. BUYER ASSUMES ALL LIABILITY IN USE OF EQUIPMENT.

R

Rogue Fitness
545 E 5th Ave.
Columbus, Ohio 43201
614-358-6190
team@roguefitness.com

STEP 7:

SECURE ATTACHMENT POST (ITEM 17) IN 5TH HOLE, TO ENSURE CABLE RUNS VERTICALLY.

NOTE:

90" RACK DOES NOT NEED THE EXTENSION STRAP

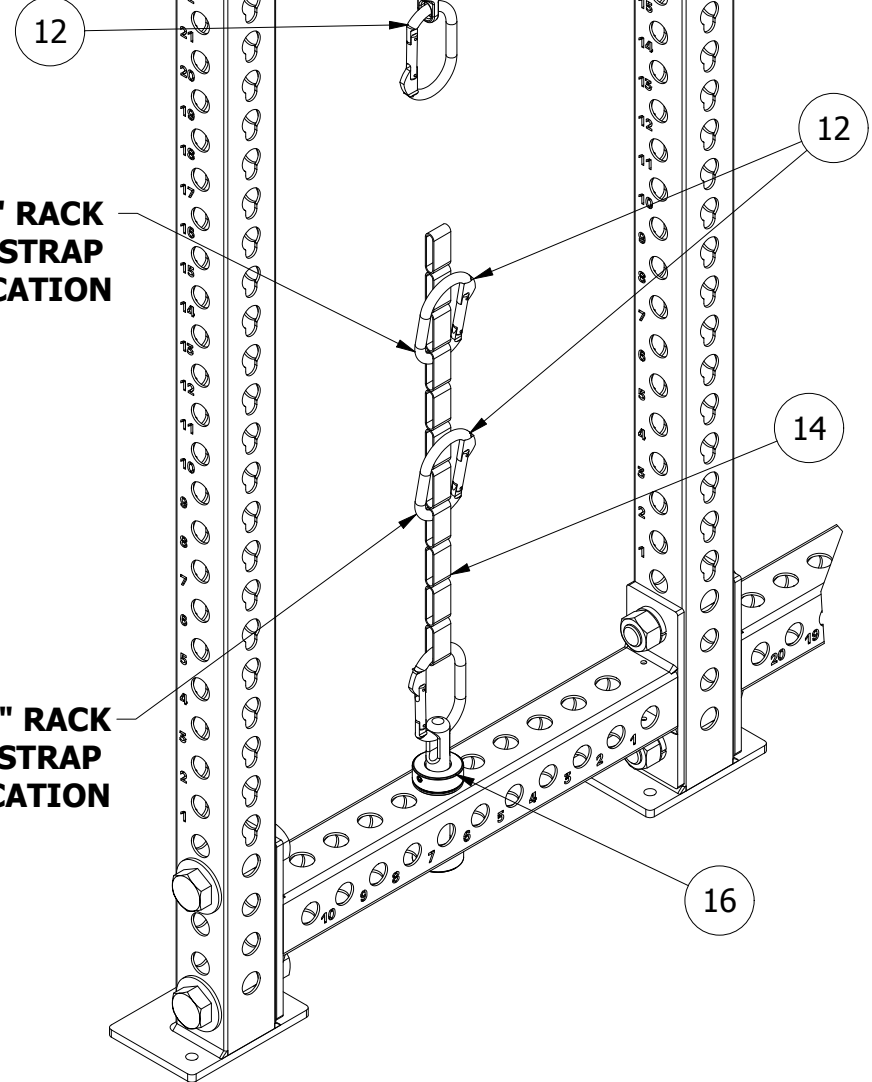
FOR THE 100" AND 108" RACK CLIP IN CARABINER AT THE LOCATION SHOWN.

100" RACK - 4TH SLOT FROM THE BOTTOM

108" RACK - 8TH SLOT FROM THE BOTTOM

108" RACK
EXTENSION STRAP
LOCATION

100" RACK
EXTENSION STRAP
LOCATION



DISCLAIMER

Resistance training, gymnastics training, and activities at height are potentially dangerous and may lead to severe injury or even death. Use common sense when training, to obtain instruction in the proper execution of movements, and understand your limitations. This equipment must only be used by competent and responsible persons, or under the direct and visual control of a competent and responsible person. Obtaining instruction in appropriate techniques and methods of use is your own responsibility. You assume all risks and responsibilities for all damage, injury or death which may occur during or following incorrect use of this equipment in any matter whatsoever. Rogue Fitness bears no liability beyond the replacement value of the equipment in question.



WARNING!



MISUSE OF THIS CAN RESULT IN
SEVERE INJURY

BOTH ROGUE FITNESS AND BUYER DISCLAIM ANY EXPRESS OR IMPLIED WARRANTY, INCLUDING, WITHOUT LIMITATION, WARRANTIES OR MERCHANTABILITY AND/OR FITNESS FOR A PARTICULAR PURPOSE WITH RESPECT TO THE EQUIPMENT. BUYER ASSUMES ALL LIABILITY IN USE OF EQUIPMENT.

R

Rogue Fitness
545 E 5th Ave.
Columbus, Ohio 43201
614-358-6190
team@roguefitness.com

STEP 9:

TO ATTACH SHEATH, SLIDE SHEATH FULLY OVER CABLE.

ATTACH BANDS TO CABLE CARABINER AND EXTENSION STRAP CARABINER.

NOTE:

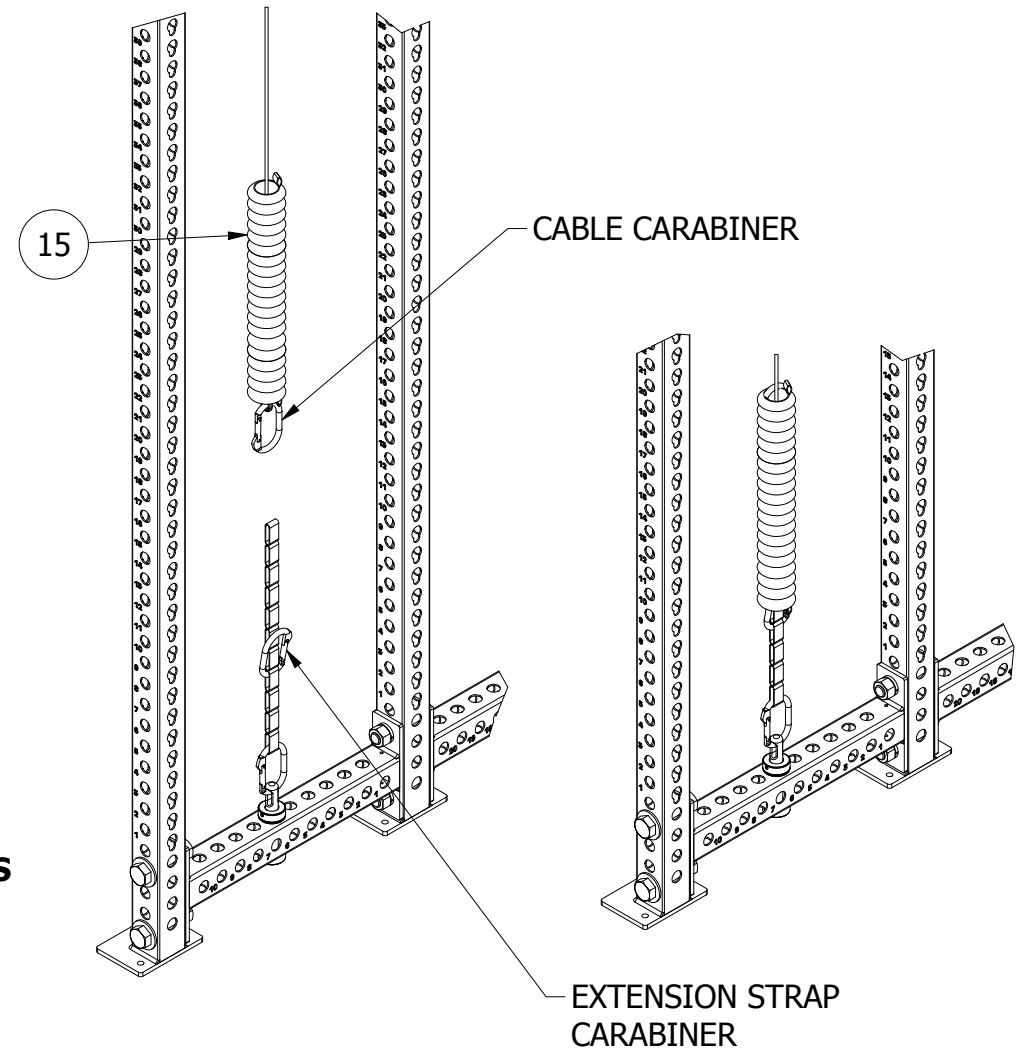
STANDARD MONSTER BANDS SHOULD BE DOUBLED UP.

SLIDE ONE END OF THE BAND THROUGH THE EXTENSION STRAP CARABINER SUCH THAT THE BAND IS CENTERED ON THAT CARABINER. THEN CLIP BOTH ENDS OF THE BAND INTO THE CABLE CARABINER.

STEP 10:

SLIDE SHEATH BACK DOWN OVER BAND AND CLIP BOTH ENDS INTO CABLE & EXTENSION STRAP CARABINERS, LOCATION DESCRIBED ON PAGE 6.

****ENSURE BAND SHEATH IS ALWAYS SECURED OVER BANDS DURING USE****



DISCLAIMER

Resistance training, gymnastics training, and activities at height are potentially dangerous and may lead to severe injury or even death. Use common sense when training, to obtain instruction in the proper execution of movements, and understand your limitations. This equipment must only be used by competent and responsible persons, or under the direct and visual control of a competent and responsible person. Obtaining instruction in appropriate techniques and methods of use is your own responsibility. You assume all risks and responsibilities for all damage, injury or death which may occur during or following incorrect use of this equipment in any matter whatsoever. Rogue Fitness bears no liability beyond the replacement value of the equipment in question.



MISUSE OF THIS CAN RESULT IN SEVERE INJURY

BOTH ROGUE FITNESS AND BUYER DISCLAIM ANY EXPRESS OR IMPLIED WARRANTY, INCLUDING, WITHOUT LIMITATION, WARRANTIES OR MERCHANTABILITY AND/OR FITNESS FOR A PARTICULAR PURPOSE WITH RESPECT TO THE EQUIPMENT. BUYER ASSUMES ALL LIABILITY IN USE OF EQUIPMENT.

R
Rogue Fitness
545 E 5th Ave.
Columbus, Ohio 43201
614-358-6190
team@roguefitness.com