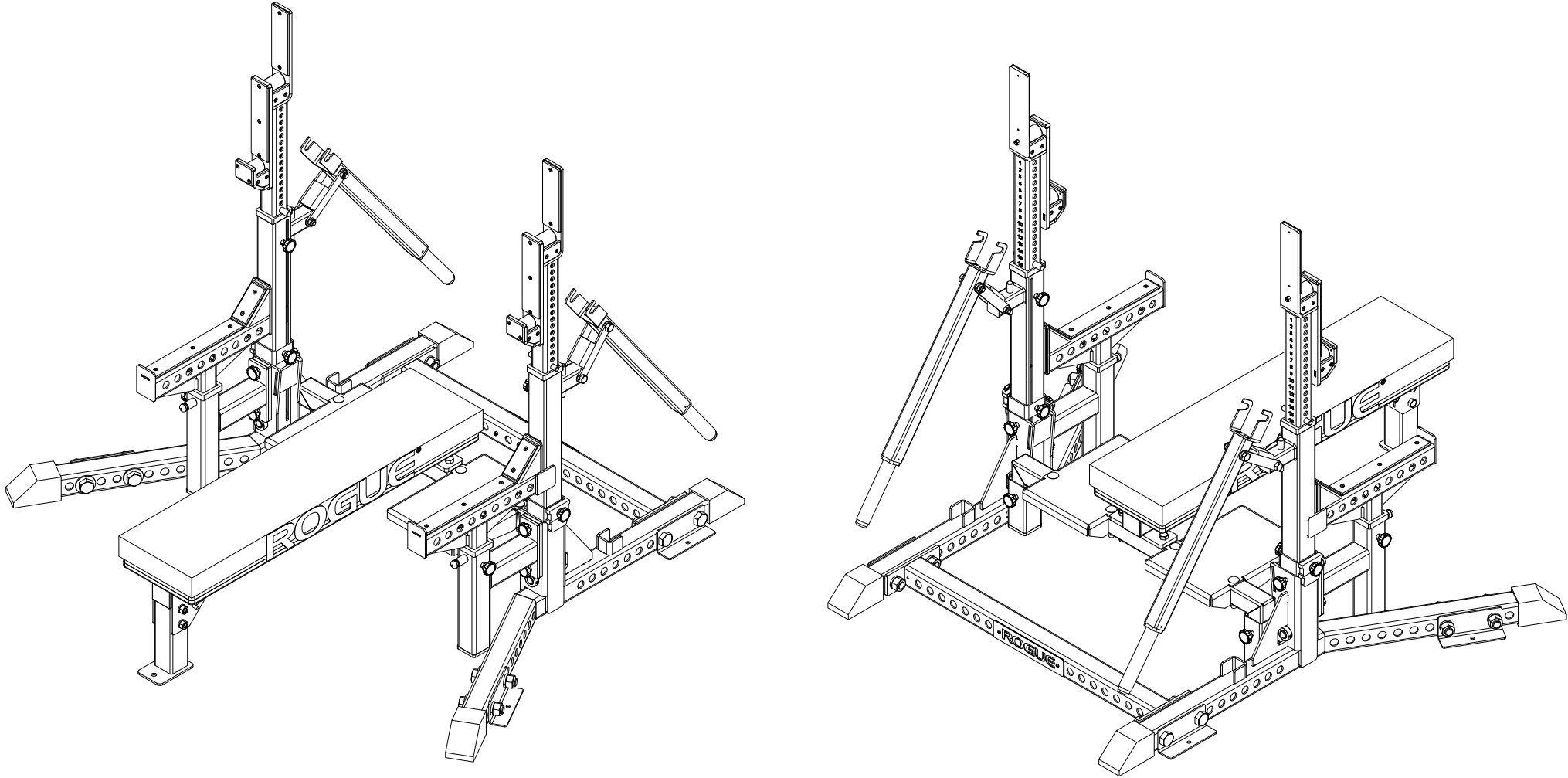


ROGUE

COMBO RACK



DISCLAIMER

Resistance training, gymnastics training, and activities at height are potentially dangerous and may lead to severe injury or even death. Use common sense when training, to obtain instruction in the proper execution of movements, and understand your limitations. This equipment must only be used by competent and responsible persons, or under the direct and visual control of a competent and responsible person. Obtaining instruction in appropriate techniques and methods of use is your own responsibility. You assume all risks and responsibilities for all damage, injury or death which may occur during or following incorrect use of this equipment in any matter whatsoever. Rogue Fitness bears no liability beyond the replacement value of the equipment in question.



WARNING!

MISUSE OF THIS CAN RESULT IN
SEVERE INJURY

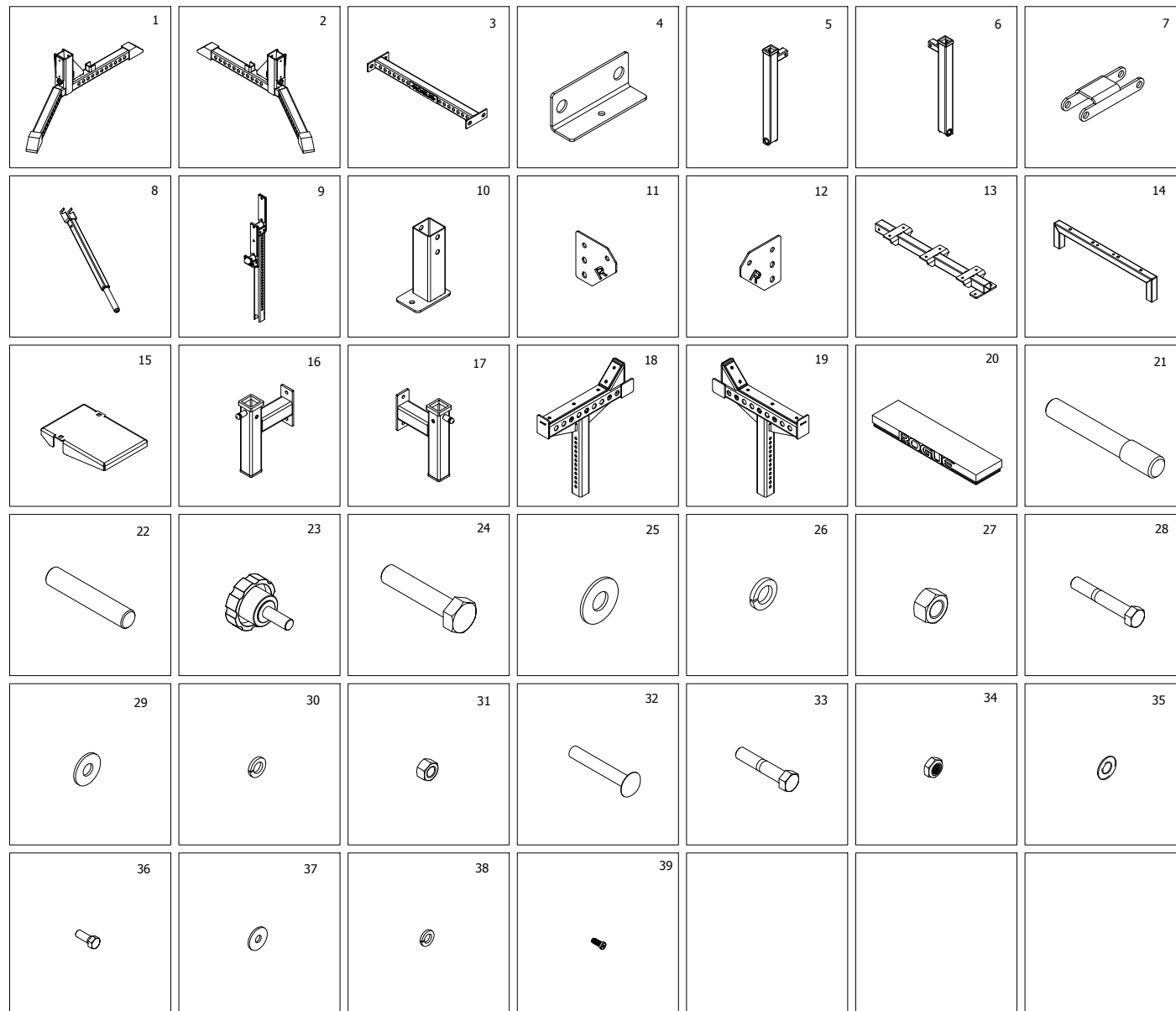
BOTH ROGUE FITNESS AND BUYER DISCLAIM ANY EXPRESS OR IMPLIED WARRANTY, INCLUDING, WITHOUT LIMITATION, WARRANTIES OR MERCHANTABILITY AND/OR FITNESS FOR A PARTICULAR PURPOSE WITH RESPECT TO THE EQUIPMENT. BUYER ASSUMES ALL LIABILITY IN USE OF EQUIPMENT.

R

Rogue Fitness
545 E 5th Ave.
Columbus, Ohio 43201
614-358-6190
team@roguefitness.com

ROGUE

| ITEM | QTY | DESCRIPTION |
|------|-----|-------------------------------|
| 1 | 1 | RIGHT BASE ASSEMBLY |
| 2 | 1 | LEFT BASE ASSEMBLY |
| 3 | 1 | REAR CROSSMEMBER |
| 4 | 4 | BOLT DOWN BRACKET |
| 5 | 1 | RIGHT UPRIGHT |
| 6 | 1 | LEFT UPRIGHT |
| 7 | 2 | JACK LEVER BRACKET |
| 8 | 2 | JACK LEVER |
| 9 | 2 | J-CUP UPRIGHT |
| 10 | 1 | BENCH FRONT FOOT |
| 11 | 1 | RIGHT BENCH SIDE PLATE |
| 12 | 1 | LEFT BENCH SIDE PLATE |
| 13 | 1 | BENCH SPINE |
| 14 | 1 | REAR BENCH CROSSMEMBER |
| 15 | 2 | SPOTTER DECK |
| 16 | 1 | RIGHT SPOTTER ARM BASE |
| 17 | 1 | LEFT SPOTTER ARM BASE |
| 18 | 1 | RIGHT SPOTTER ARM |
| 19 | 1 | LEFT SPOTTER ARM |
| 20 | 1 | BENCH PAD |
| 21 | 4 | UPRIGHT PIN |
| 22 | 2 | 1" BASE SHAFT |
| 23 | 16 | 1/2" KNOB |
| 24 | 8 | 1" x 4.75" BLACK HEX BOLT |
| 25 | 8 | 1" BLACK FLAT WASHER |
| 26 | 8 | 1" BLACK LOCK WASHER |
| 27 | 8 | 1" BLACK HEX NUT |
| 28 | 6 | 5/8" X 4" BLACK HEX BOLT |
| 29 | 6 | 5/8" BLACK FLAT WASHER |
| 30 | 10 | 5/8" BLACK LOCK WASHER |
| 31 | 10 | 5/8" BLACK HEX NUT |
| 32 | 4 | 5/8" CARRIAGE BOLT |
| 33 | 4 | 5/8" x 3.25" HEX BOLT |
| 34 | 4 | 5/8" THIN NYLOC NUT |
| 35 | 8 | 5/8" BRONZE WASHER |
| 36 | 4 | 3/8" x 1.25" HEX BOLT |
| 37 | 4 | 3/8" FLAT WASHER |
| 38 | 4 | 3/8" LOCK WASHER |
| 39 | 2 | 1/4" LOW PROFILE SOCKET SCREW |



DISCLAIMER

Resistance training, gymnastics training, and activities at height are potentially dangerous and may lead to severe injury or even death. Use common sense when training, to obtain instruction in the proper execution of movements, and understand your limitations. This equipment must only be used by competent and responsible persons, or under the direct and visual control of a competent and responsible person. Obtaining instruction in appropriate techniques and methods of use is your own responsibility. You assume all risks and responsibilities for all damage, injury or death which may occur during or following incorrect use of this equipment in any matter whatsoever. Rogue Fitness bears no liability beyond the replacement value of the equipment in question.



WARNING!

MISUSE OF THIS CAN RESULT IN SEVERE INJURY

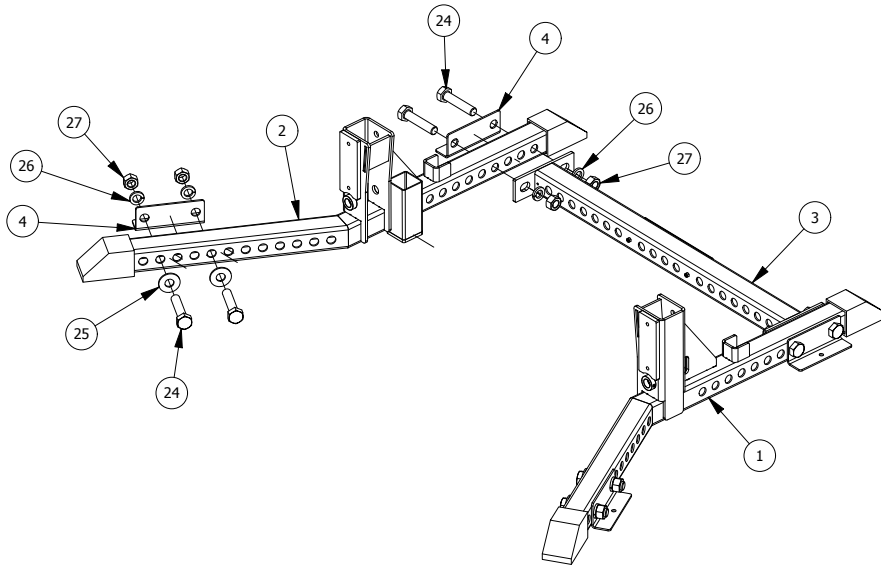
BOTH ROGUE FITNESS AND BUYER DISCLAIM ANY EXPRESS OR IMPLIED WARRANTY, INCLUDING, WITHOUT LIMITATION, WARRANTIES OR MERCHANTABILITY AND/OR FITNESS FOR A PARTICULAR PURPOSE WITH RESPECT TO THE EQUIPMENT. BUYER ASSUMES ALL LIABILITY IN USE OF EQUIPMENT.



Rogue Fitness
 545 E 5th Ave.
 Columbus, Ohio 43201
 614-358-6190
 team@roguefitness.com

ROGUE

COMBO RACK



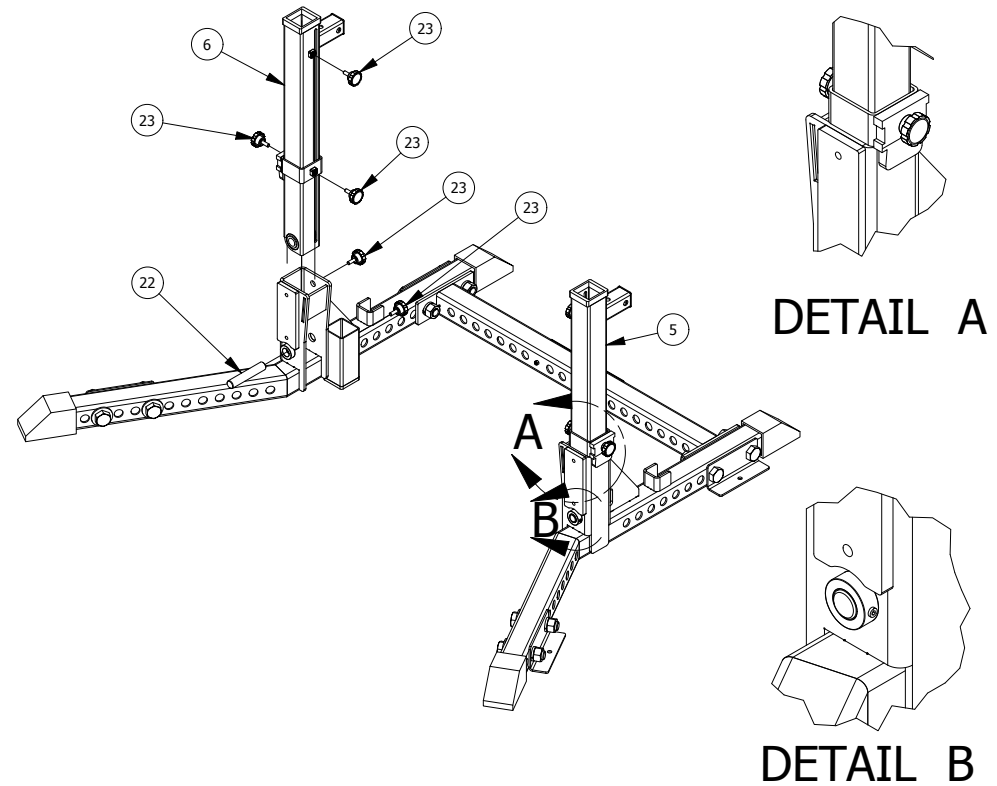
STEP 1:

ASSEMBLE RIGHT AND LEFT BASE ASSEMBLIES WITH THE REAR CROSSMEMBER USING 1" HARDWARE AS SHOWN.

ATTACH THE BOLT DOWN BRACKETS TO THE OUTSIDE OF THE BASE ASSEMBLIES AS SHOWN.

DISCLAIMER

Resistance training, gymnastics training, and activities at height are potentially dangerous and may lead to severe injury or even death. Use common sense when training, to obtain instruction in the proper execution of movements, and understand your limitations. This equipment must only be used by competent and responsible persons, or under the direct and visual control of a competent and responsible person. Obtaining instruction in appropriate techniques and methods of use is your own responsibility. You assume all risks and responsibilities for all damage, injury or death which may occur during or following incorrect use of this equipment in any matter whatsoever. Rogue Fitness bears no liability beyond the replacement value of the equipment in question.



STEP 2:

INSERT UPRIGHTS INTO BASE ASSEMBLIES AND INSERT THE 1" SHAFT THROUGH THE UPRIGHT BUSHINGS.

TIGHTEN (2) SET SCREWS ON EACH SIDE FOR THE 1" SHAFT, SHOWN IN DETAIL B.

HOOK THE WEDGE TO THE OUTSIDE OF THE BASE TO HOLD THE UPRIGHTS VERTICAL.

INSERT (10) KNOBS INTO ALL 1/2" TAPPED OR WELD NUT LOCATIONS.



WARNING!



MISUSE OF THIS CAN RESULT IN SEVERE INJURY

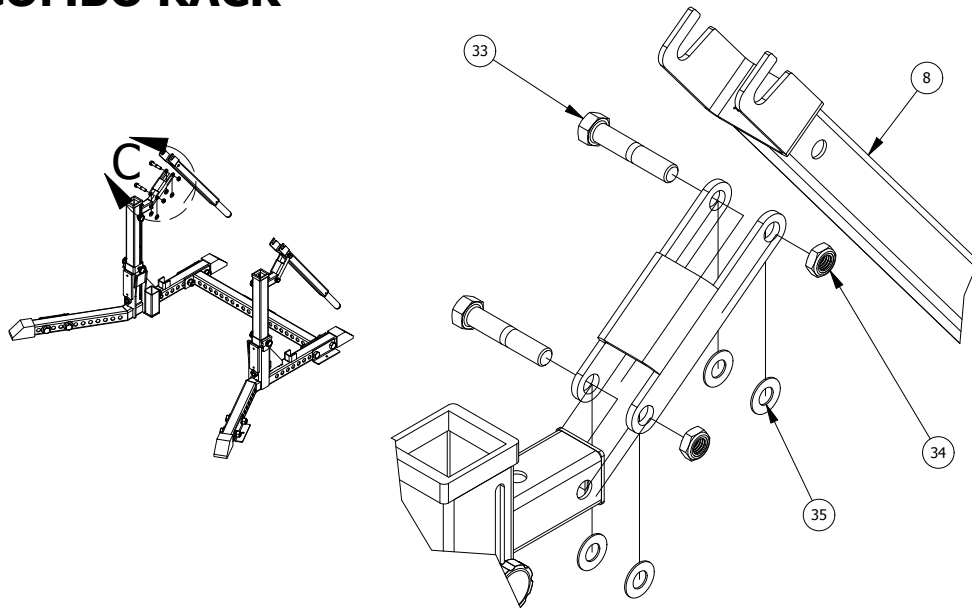
BOTH ROGUE FITNESS AND BUYER DISCLAIM ANY EXPRESS OR IMPLIED WARRANTY, INCLUDING, WITHOUT LIMITATION, WARRANTIES OR MERCHANTABILITY AND/OR FITNESS FOR A PARTICULAR PURPOSE WITH RESPECT TO THE EQUIPMENT. BUYER ASSUMES ALL LIABILITY IN USE OF EQUIPMENT.

R

Rogue Fitness
545 E 5th Ave.
Columbus, Ohio 43201
614-358-6190
team@roguefitness.com

ROGUE

COMBO RACK



DETAIL C

STEP 3:

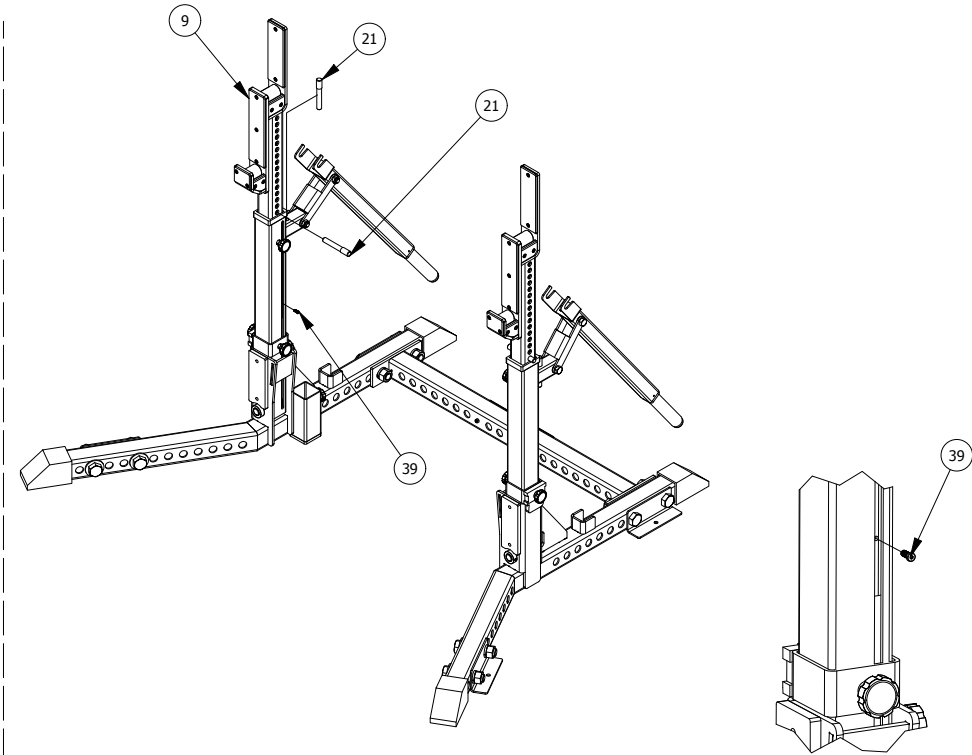
ATTACH JACK LEVERS USING THE JACK LEVER BRACKETS, NOTE BRACKET ORIENTATION.

ENSURE THE BRONZE WASHERS ARE INSERTED BETWEEN EITHER THE UPRIGHT AND BRACKET OR BRACKET AND JACK HANDLE.

TIGHTEN HARDWARE ENOUGH TO ALLOW THE LEVERS TO STILL MOVE FREELY.

DISCLAIMER

Resistance training, gymnastics training, and activities at height are potentially dangerous and may lead to severe injury or even death. Use common sense when training, to obtain instruction in the proper execution of movements, and understand your limitations. This equipment must only be used by competent and responsible persons, or under the direct and visual control of a competent and responsible person. Obtaining instruction in appropriate techniques and methods of use is your own responsibility. You assume all risks and responsibilities for all damage, injury or death which may occur during or following incorrect use of this equipment in any matter whatsoever. Rogue Fitness bears no liability beyond the replacement value of the equipment in question.



DETAIL D

STEP 4:

INSERT J-CUP UPRIGHT INTO THE UPRIGHT TUBE.

INSERT UPRIGHT PIN INTO THE J-CUP UPRIGHT TO HOLD UP.

INSERT 1/4" LOW PROFILE SCREW INTO J-CUP UPRIGHT, THROUGH THE UPRIGHT SLOT, SHOWN IN DETAIL D.

STORE EXTRA RACK PINS IN THE UPRIGHT TUBE AS SHOWN.



WARNING!

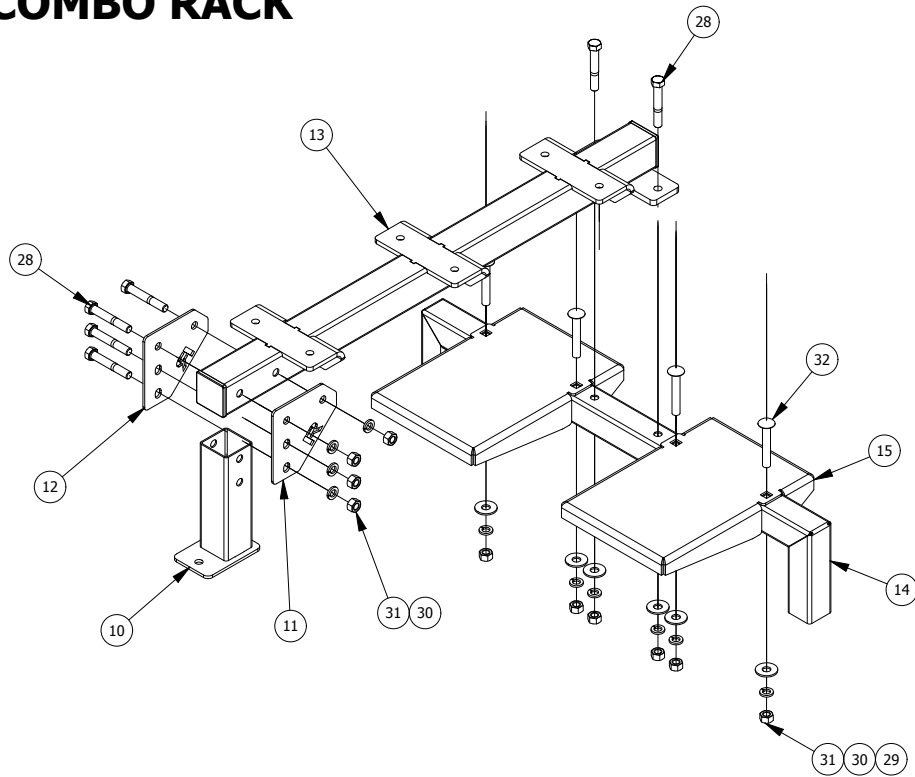
MISUSE OF THIS CAN RESULT IN SEVERE INJURY

BOTH ROGUE FITNESS AND BUYER DISCLAIM ANY EXPRESS OR IMPLIED WARRANTY, INCLUDING, WITHOUT LIMITATION, WARRANTIES OR MERCHANTABILITY AND/OR FITNESS FOR A PARTICULAR PURPOSE WITH RESPECT TO THE EQUIPMENT. BUYER ASSUMES ALL LIABILITY IN USE OF EQUIPMENT.

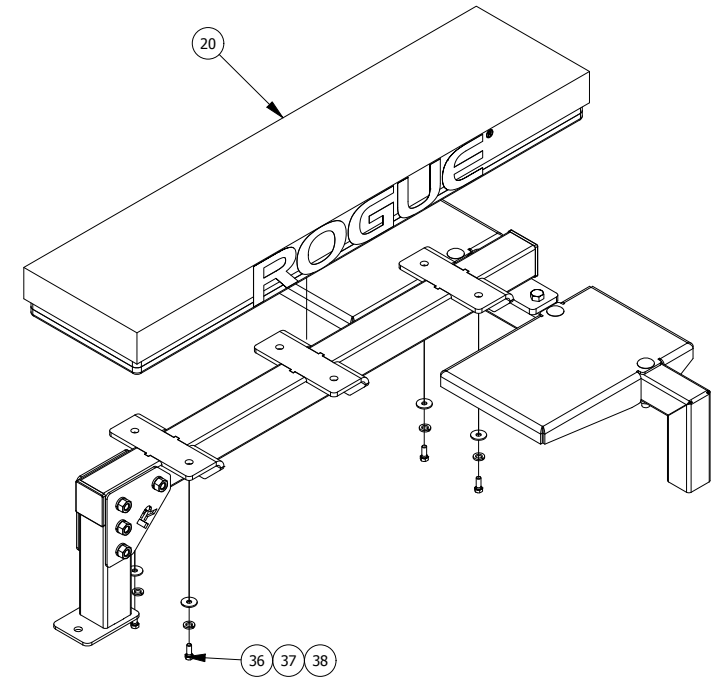
R
Rogue Fitness
 545 E 5th Ave.
 Columbus, Ohio 43201
 614-358-6190
 team@roguefitness.com

ROGUE

COMBO RACK



STEP 5:
ASSEMBLE BENCH FRAME USING 5/8" HARDWARE.
LEAVE LOOSE, DO NOT FULLY TIGHTEN HARDWARE.



STEP 6:
ATTACH BENCH PAD USING 3/8" HARDWARE.
FULLY TIGHTEN 3/8" PAD HARDWARE ONLY.

DISCLAIMER

Resistance training, gymnastics training, and activities at height are potentially dangerous and may lead to severe injury or even death. Use common sense when training, to obtain instruction in the proper execution of movements, and understand your limitations. This equipment must only be used by competent and responsible persons, or under the direct and visual control of a competent and responsible person. Obtaining instruction in appropriate techniques and methods of use is your own responsibility. You assume all risks and responsibilities for all damage, injury or death which may occur during or following incorrect use of this equipment in any matter whatsoever. Rogue Fitness bears no liability beyond the replacement value of the equipment in question.



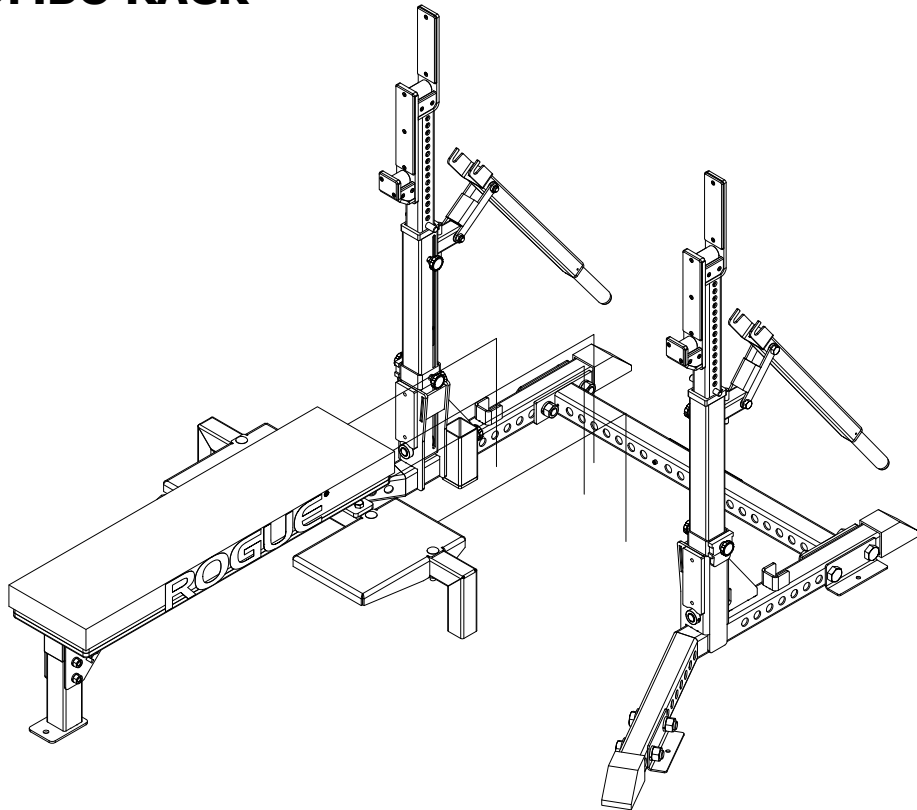
MISUSE OF THIS CAN RESULT IN
SEVERE INJURY

BOTH ROGUE FITNESS AND BUYER DISCLAIM ANY EXPRESS OR IMPLIED WARRANTY, INCLUDING, WITHOUT LIMITATION, WARRANTIES OR MERCHANTABILITY AND/OR FITNESS FOR A PARTICULAR PURPOSE WITH RESPECT TO THE EQUIPMENT. BUYER ASSUMES ALL LIABILITY IN USE OF EQUIPMENT.

R
Rogue Fitness
545 E 5th Ave.
Columbus, Ohio 43201
614-358-6190
team@roguefitness.com

ROGUE

COMBO RACK

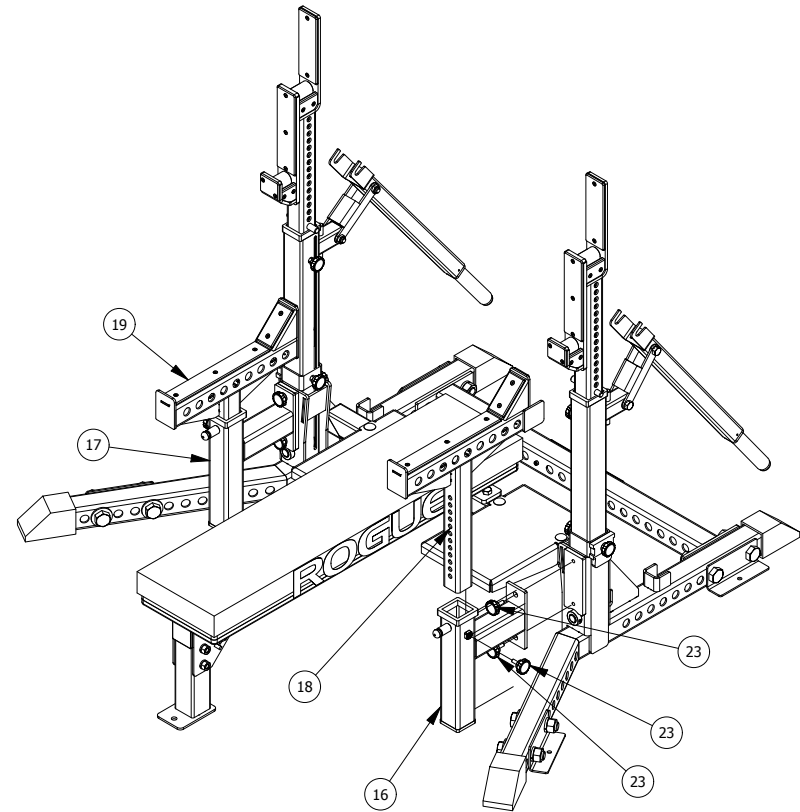


STEP 7:
INSTALL ASSEMBLED BENCH FRAME INTO THE RACK.

ONCE BENCH FRAME IS INSTALLED, FULLY TIGHTEN HARDWARE.

DISCLAIMER

Resistance training, gymnastics training, and activities at height are potentially dangerous and may lead to severe injury or even death. Use common sense when training, to obtain instruction in the proper execution of movements, and understand your limitations. This equipment must only be used by competent and responsible persons, or under the direct and visual control of a competent and responsible person. Obtaining instruction in appropriate techniques and methods of use is your own responsibility. You assume all risks and responsibilities for all damage, injury or death which may occur during or following incorrect use of this equipment in any matter whatsoever. Rogue Fitness bears no liability beyond the replacement value of the equipment in question.



STEP 8:
ASSEMBLE SPOTTER ARMS INTO BASES AND ATTACH TO THE RACK USING THE 1/2" KNOBS.

ENSURE TO INSTALL 1/2" KNOB TO THE OUTSIDE OF THE SPOTTER ARM BASE ON EACH SIDE.



WARNING!



MISUSE OF THIS CAN RESULT IN SEVERE INJURY

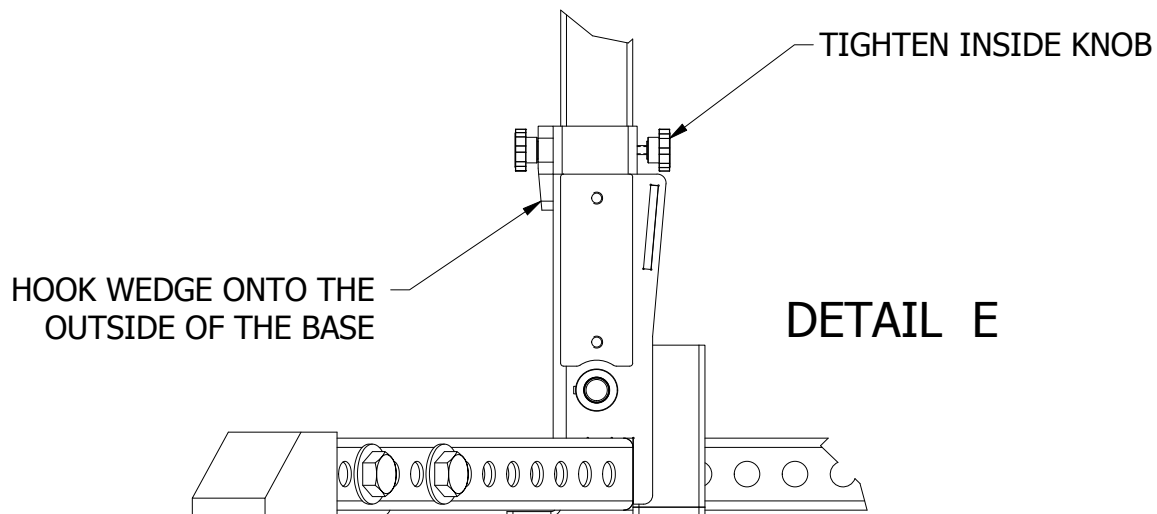
BOTH ROGUE FITNESS AND BUYER DISCLAIM ANY EXPRESS OR IMPLIED WARRANTY, INCLUDING, WITHOUT LIMITATION, WARRANTIES OR MERCHANTABILITY AND/OR FITNESS FOR A PARTICULAR PURPOSE WITH RESPECT TO THE EQUIPMENT. BUYER ASSUMES ALL LIABILITY IN USE OF EQUIPMENT.

R

Rogue Fitness
545 E 5th Ave.
Columbus, Ohio 43201
614-358-6190
team@roguefitness.com

ROGUE

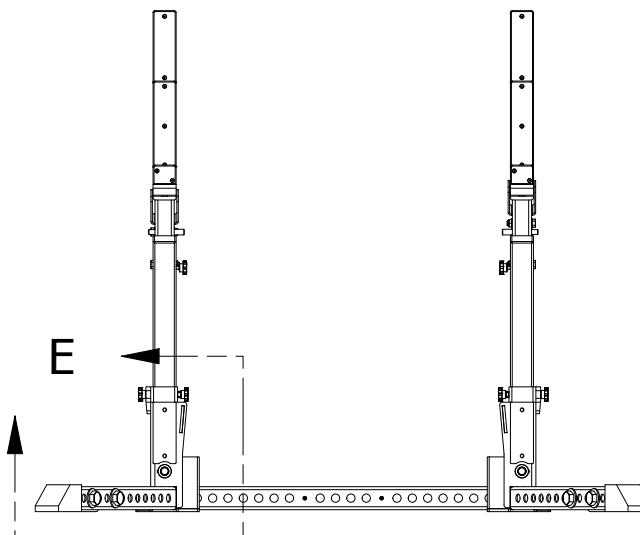
COMBO RACK



VERTICAL UPRIGHT USE

USE THE RACK IN THE VERTICAL UPRIGHT POSITION FOR BENCH AND SQUAT.

TO DO SO HOOK THE WEDGE ASSEMBLY TO THE OUTSIDE OF THE BASE CHANNEL AND TIGHTEN THE INSIDE KNOB TO PRESS THE UPRIGHT OUTWARD.



DISCLAIMER

Resistance training, gymnastics training, and activities at height are potentially dangerous and may lead to severe injury or even death. Use common sense when training, to obtain instruction in the proper execution of movements, and understand your limitations. This equipment must only be used by competent and responsible persons, or under the direct and visual control of a competent and responsible person. Obtaining instruction in appropriate techniques and methods of use is your own responsibility. You assume all risks and responsibilities for all damage, injury or death which may occur during or following incorrect use of this equipment in any matter whatsoever. Rogue Fitness bears no liability beyond the replacement value of the equipment in question.



WARNING!

MISUSE OF THIS CAN RESULT IN SEVERE INJURY

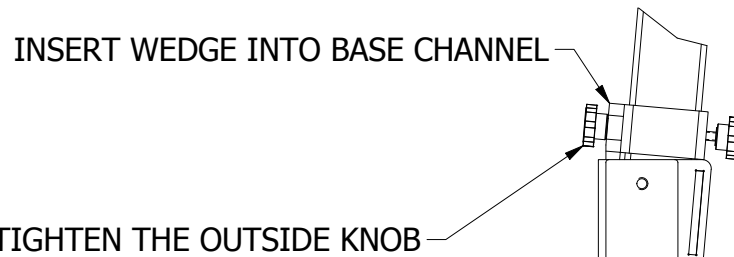
BOTH ROGUE FITNESS AND BUYER DISCLAIM ANY EXPRESS OR IMPLIED WARRANTY, INCLUDING, WITHOUT LIMITATION, WARRANTIES OR MERCHANTABILITY AND/OR FITNESS FOR A PARTICULAR PURPOSE WITH RESPECT TO THE EQUIPMENT. BUYER ASSUMES ALL LIABILITY IN USE OF EQUIPMENT.



Rogue Fitness
545 E 5th Ave.
Columbus, Ohio 43201
614-358-6190
team@roguefitness.com

ROGUE

COMBO RACK



DETAIL F

ANGLED UPRIGHT USE

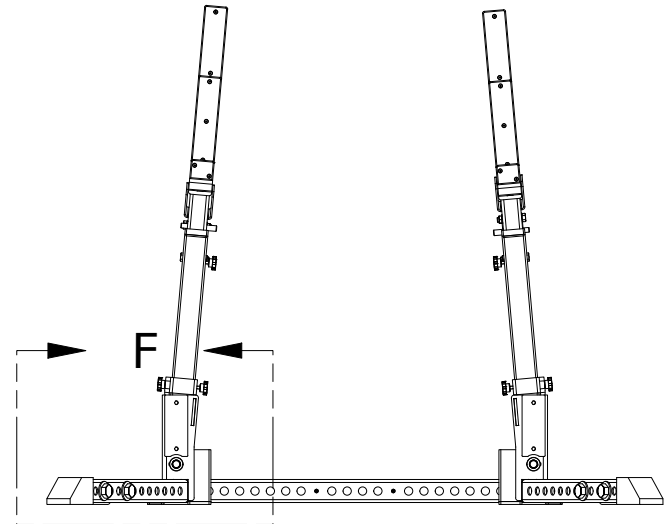
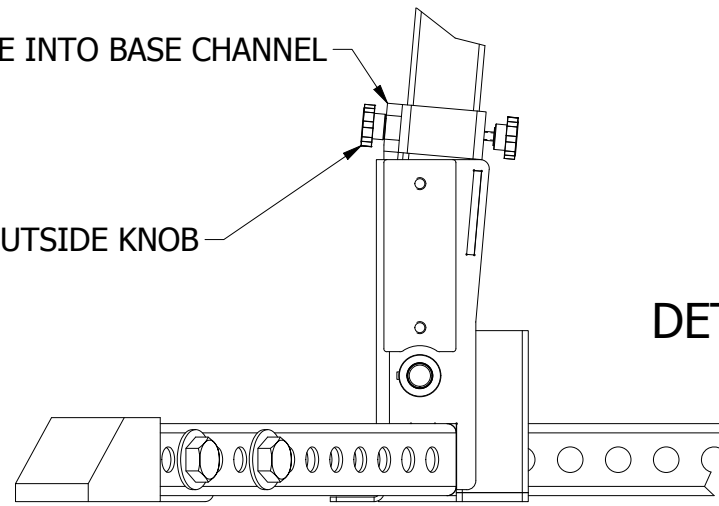
USE THE RACK IN THE ANGLED UPRIGHT POSITION FOR SQUAT.

TO DO SO MOVE THE WEDGE ASSEMBLY TO INSIDE THE BASE CHANNEL AND TIGHTEN THE OUTSIDE KNOB TO PRESS THE UPRIGHT INWARD.

NOTE:
ROGUE RECOMMENDS THE RACK BE SECURED TO THE FLOOR USING THE BOLT DOWN BRACKETS PROVIDED.

THE CUSTOMER IS RESPONSIBLE FOR USING THE CORRECT HARDWARE FOR THEIR SPECIFIC APPLICATION.

FAILURE TO DO SO COULD RESULT IN INJURY.



DISCLAIMER

Resistance training, gymnastics training, and activities at height are potentially dangerous and may lead to severe injury or even death. Use common sense when training, to obtain instruction in the proper execution of movements, and understand your limitations. This equipment must only be used by competent and responsible persons, or under the direct and visual control of a competent and responsible person. Obtaining instruction in appropriate techniques and methods of use is your own responsibility. You assume all risks and responsibilities for all damage, injury or death which may occur during or following incorrect use of this equipment in any matter whatsoever. Rogue Fitness bears no liability beyond the replacement value of the equipment in question.



WARNING!



MISUSE OF THIS CAN RESULT IN SEVERE INJURY

BOTH ROGUE FITNESS AND BUYER DISCLAIM ANY EXPRESS OR IMPLIED WARRANTY, INCLUDING, WITHOUT LIMITATION, WARRANTIES OR MERCHANTABILITY AND/OR FITNESS FOR A PARTICULAR PURPOSE WITH RESPECT TO THE EQUIPMENT. BUYER ASSUMES ALL LIABILITY IN USE OF EQUIPMENT.



Rogue Fitness
545 E 5th Ave.
Columbus, Ohio 43201
614-358-6190
team@roguefitness.com