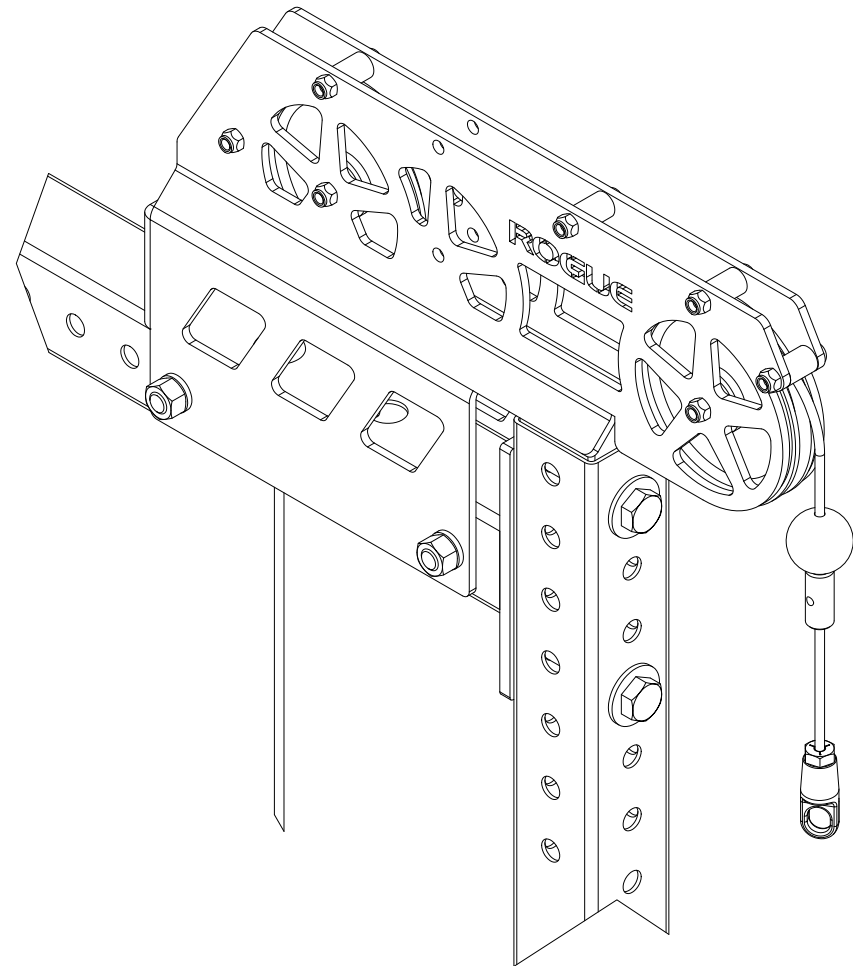


MONSTER LITE SLINGER

TOOLS REQUIRED

- (2) 15/16" WRENCH
- (1) 9/16" WRENCH
- (1) 7/32" HEX SOCKET KEY



DISCLAIMER

Resistance training, gymnastics training, and activities at height are potentially dangerous and may lead to severe injury or even death. Use common sense when training, to obtain instruction in the proper execution of movements, and understand your limitations. This equipment must only be used by competent and responsible persons, or under the direct and visual control of a competent and responsible person. Obtaining instruction in appropriate techniques and methods of use is your own responsibility. You assume all risks and responsibilities for all damage, injury or death which may occur during or following incorrect use of this equipment in any matter whatsoever. Rogue Fitness bears no liability beyond the replacement value of the equipment in question.



WARNING!



MISUSE OF THIS CAN RESULT IN SEVERE INJURY

BOTH ROGUE FITNESS AND BUYER DISCLAIM ANY EXPRESS OR IMPLIED WARRANTY, INCLUDING, WITHOUT LIMITATION, WARRANTIES OR MERCHANTABILITY AND/OR FITNESS FOR A PARTICULAR PURPOSE WITH RESPECT TO THE EQUIPMENT. BUYER ASSUMES ALL LIABILITY IN USE OF EQUIPMENT.

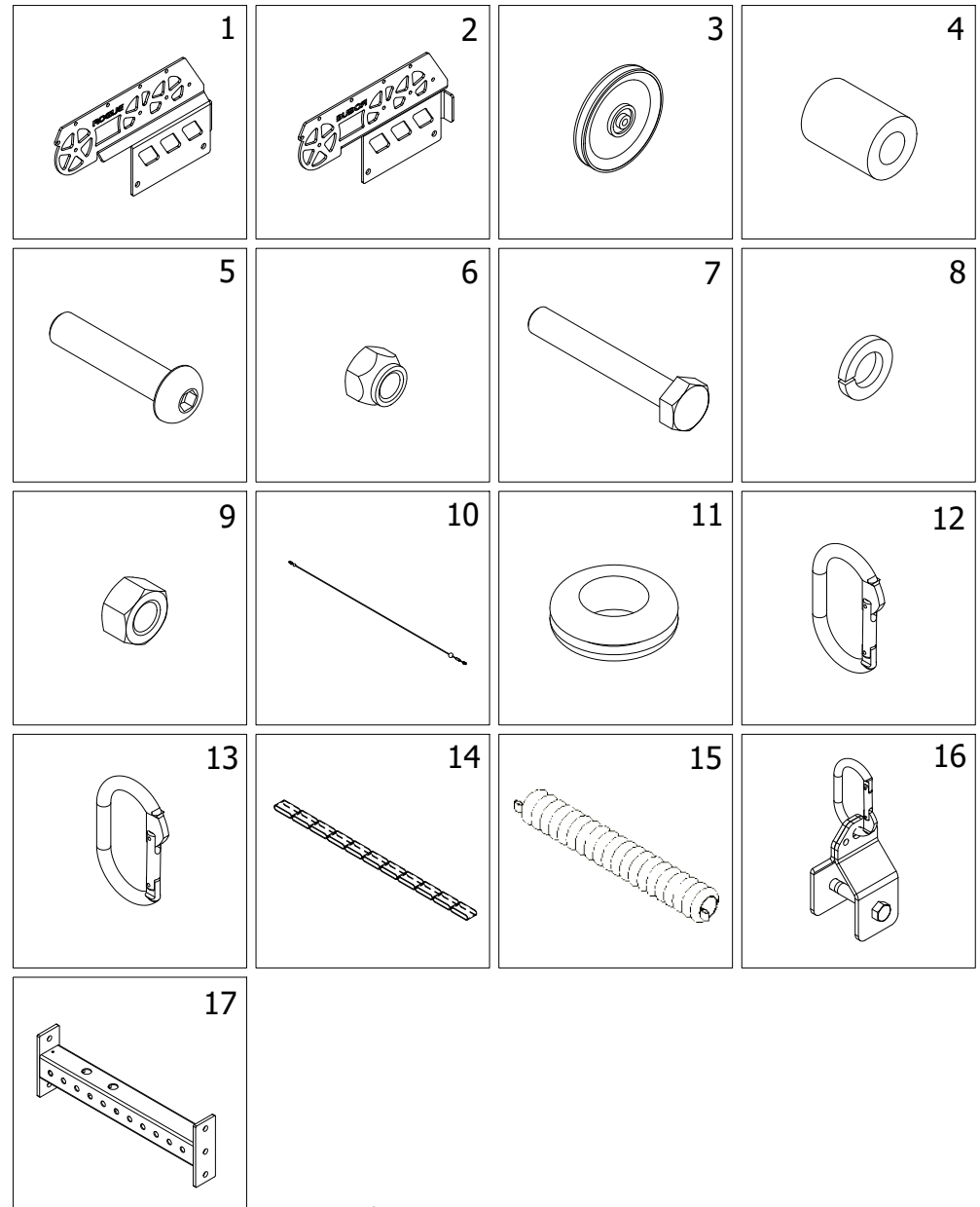


Rogue Fitness
545 E 5th Ave.
Columbus, Ohio 43201
614-358-6190
team@roguefitness.com

ROGUE

PARTS LIST

ITEM	QTY	DESCRIPTION
1	1	SLINGER SIDE PLATE - RH
2	1	SLINGER SIDE PLATE - LH
3	2	6" CABLE PULLEY
4	5	3/8" X 1" SPACER
5	7	3/8" x 1-3/4" SOCKET HEAD SCREW
6	7	3/8" NYLOC NUT
7	2	5/8" X 4-1/4" HEX BOLT
8	2	5/8" LOCK WASHER
9	2	5/8" HEX NUT
10	1	SLINGER CABLE
11	2	RUBBER GROMMET
12	2	SLIVER CARABINER
13	1	BLACK CARABINER
14	1	SLINGER EXTENSION STRAP
15	1	SLINGER BAND SHEATH
16	1	MONSTER LITE SHACKLE
17	1	MONSTER LITE SLINGER CROSSMEMBER*



*CROSSMEMBER LENGTH DEPENDS ON LENGTH PURCHASED. CROSSMEMBER MAY BE PURCHASED FROM ROGUE OR EXISTING CROSSMEMBER CAN BE DRILLED BY AN EXPERIENCED CRAFTSMAN.

DISCLAIMER

Resistance training, gymnastics training, and activities at height are potentially dangerous and may lead to severe injury or even death. Use common sense when training, to obtain instruction in the proper execution of movements, and understand your limitations. This equipment must only be used by competent and responsible persons, or under the direct and visual control of a competent and responsible person. Obtaining instruction in appropriate techniques and methods of use is your own responsibility. You assume all risks and responsibilities for all damage, injury or death which may occur during or following incorrect use of this equipment in any matter whatsoever. Rogue Fitness bears no liability beyond the replacement value of the equipment in question.



WARNING!



MISUSE OF THIS CAN RESULT IN SEVERE INJURY

BOTH ROGUE FITNESS AND BUYER DISCLAIM ANY EXPRESS OR IMPLIED WARRANTY, INCLUDING, WITHOUT LIMITATION, WARRANTIES OR MERCHANTABILITY AND/OR FITNESS FOR A PARTICULAR PURPOSE WITH RESPECT TO THE EQUIPMENT. BUYER ASSUMES ALL LIABILITY IN USE OF EQUIPMENT.



Rogue Fitness
 545 E 5th Ave.
 Columbus, Ohio 43201
 614-358-6190
 team@roguefitness.com

ROGUE

MONSTER LITE SLINGER

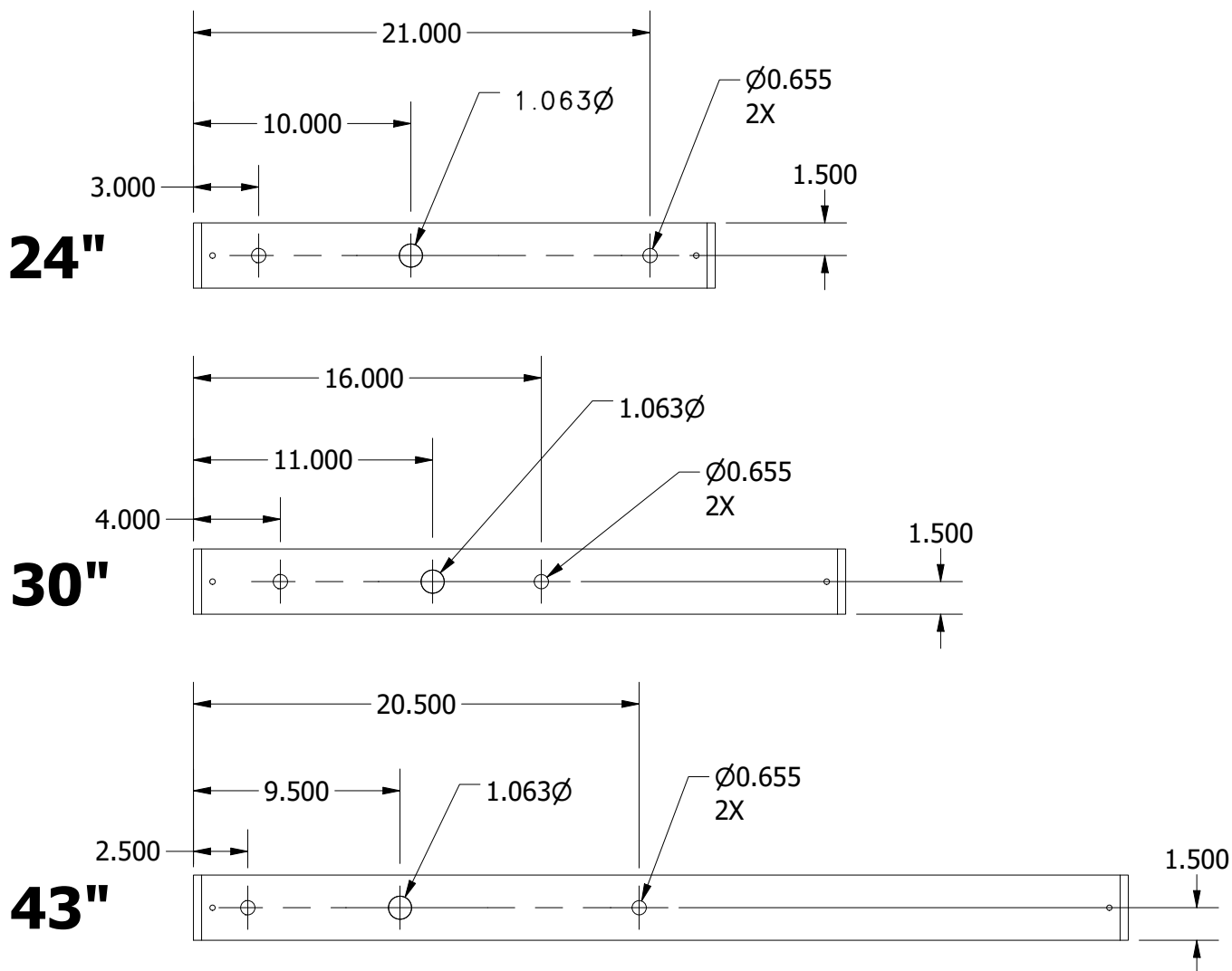
STEP 1:

IF NEW SLINGER CROSSMEMBERS WERE PURCHASED MOVE TO STEP 2.

IF MODIFYING EXISITING CROSSMEMBERS DRILL THE 1-1/16" HOLES THROUGH THE ENTIRE CROSSMEMBER IN THE LOCATION SHOWN.

NOTE:

IF YOU ARE NOT CONFIDENT IN YOUR MECHANICAL SKILLS, PLEASE SEEK THE HELP OF A PROFESSIONAL TO PERFORM THE MODIFICATION.



DISCLAIMER

Resistance training, gymnastics training, and activities at height are potentially dangerous and may lead to severe injury or even death. Use common sense when training, to obtain instruction in the proper execution of movements, and understand your limitations. This equipment must only be used by competent and responsible persons, or under the direct and visual control of a competent and responsible person. Obtaining instruction in appropriate techniques and methods of use is your own responsibility. You assume all risks and responsibilities for all damage, injury or death which may occur during or following incorrect use of this equipment in any matter whatsoever. Rogue Fitness bears no liability beyond the replacement value of the equipment in question.



WARNING!



MISUSE OF THIS CAN RESULT IN SEVERE INJURY

BOTH ROGUE FITNESS AND BUYER DISCLAIM ANY EXPRESS OR IMPLIED WARRANTY, INCLUDING, WITHOUT LIMITATION, WARRANTIES OR MERCHANTABILITY AND/OR FITNESS FOR A PARTICULAR PURPOSE WITH RESPECT TO THE EQUIPMENT. BUYER ASSUMES ALL LIABILITY IN USE OF EQUIPMENT.

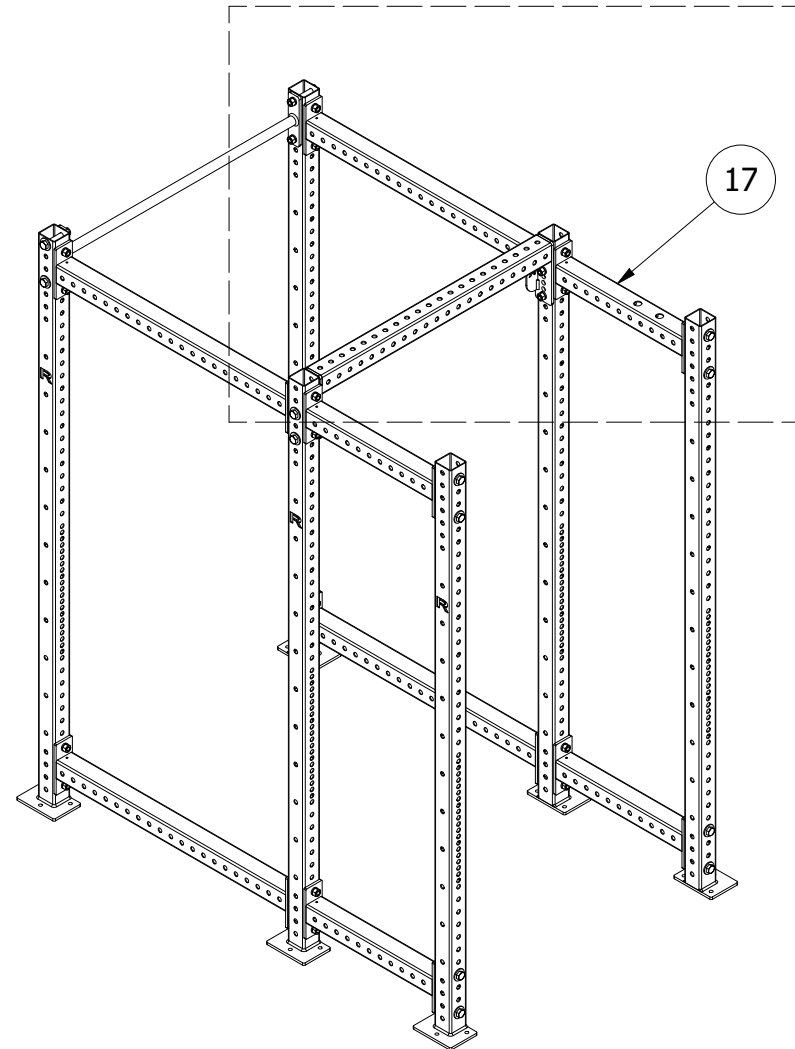


Rogue Fitness
545 E 5th Ave.
Columbus, Ohio 43201
614-358-6190
team@roguefitness.com

STEP 2:

INSTALL MODIFIED OR NEW SLINGER CROSSMEMBER INTO THE RACK USING THE EXISTING MOUNTING HARDWARE.

ENSURE THE SLINGER HOLES ARE TOWARDS THE OUTSIDE OF THE RACK.



DISCLAIMER

Resistance training, gymnastics training, and activities at height are potentially dangerous and may lead to severe injury or even death. Use common sense when training, to obtain instruction in the proper execution of movements, and understand your limitations. This equipment must only be used by competent and responsible persons, or under the direct and visual control of a competent and responsible person. Obtaining instruction in appropriate techniques and methods of use is your own responsibility. You assume all risks and responsibilities for all damage, injury or death which may occur during or following incorrect use of this equipment in any matter whatsoever. Rogue Fitness bears no liability beyond the replacement value of the equipment in question.



WARNING!

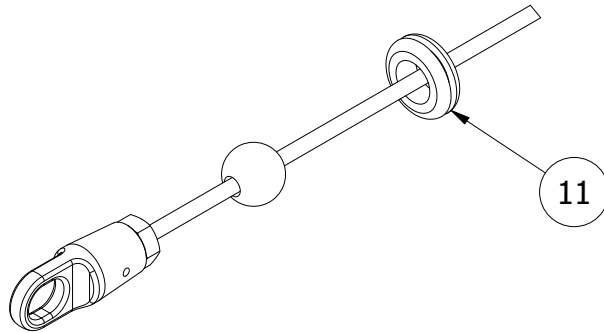


MISUSE OF THIS CAN RESULT IN
SEVERE INJURY

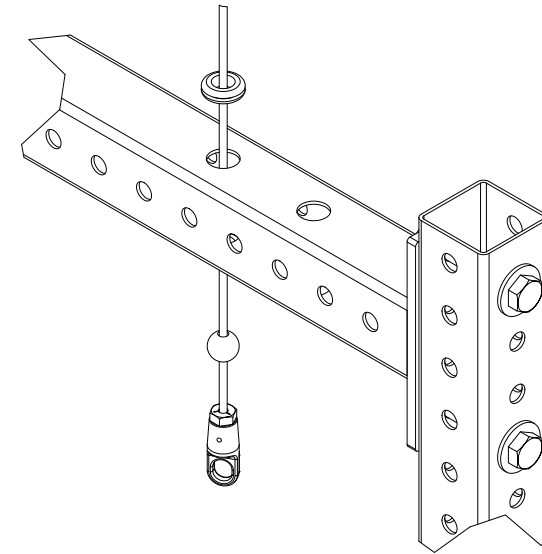
BOTH ROGUE FITNESS AND BUYER DISCLAIM ANY EXPRESS OR IMPLIED WARRANTY, INCLUDING, WITHOUT LIMITATION, WARRANTIES OR MERCHANTABILITY AND/OR FITNESS FOR A PARTICULAR PURPOSE WITH RESPECT TO THE EQUIPMENT. BUYER ASSUMES ALL LIABILITY IN USE OF EQUIPMENT.

R

Rogue Fitness
545 E 5th Ave.
Columbus, Ohio 43201
614-358-6190
team@roguefitness.com



STEP 3:
PASS (1) GROMMET OVER THE CLEVIS END AND
1" BALL STOP.



STEP 4:
PASS THE 1" BALL STOP SIDE OF THE CABLE THROUGH
THE PREFERRED SECOND HOLE.

ENSURE THE RUBBER GROMMET STAYS ON THE TOP
SIDE OF THE CROSSMEMEBER.

DISCLAIMER

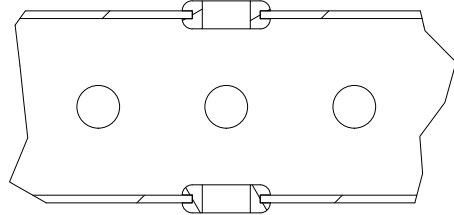
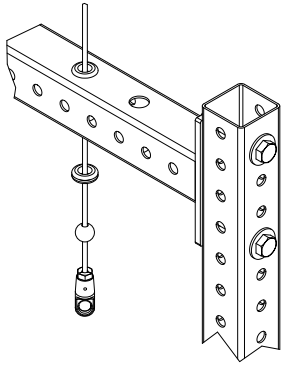
Resistance training, gymnastics training, and activities at height are potentially dangerous and may lead to severe injury or even death. Use common sense when training, to obtain instruction in the proper execution of movements, and understand your limitations. This equipment must only be used by competent and responsible persons, or under the direct and visual control of a competent and responsible person. Obtaining instruction in appropriate techniques and methods of use is your own responsibility. You assume all risks and responsibilities for all damage, injury or death which may occur during or following incorrect use of this equipment in any matter whatsoever. Rogue Fitness bears no liability beyond the replacement value of the equipment in question.



MISUSE OF THIS CAN RESULT IN
SEVERE INJURY

BOTH ROGUE FITNESS AND BUYER DISCLAIM ANY EXPRESS OR IMPLIED WARRANTY, INCLUDING, WITHOUT LIMITATION, WARRANTIES OR MERCHANTABILITY AND/OR FITNESS FOR A PARTICULAR PURPOSE WITH RESPECT TO THE EQUIPMENT. BUYER ASSUMES ALL LIABILITY IN USE OF EQUIPMENT.

R
Rogue Fitness
545 E 5th Ave.
Columbus, Ohio 43201
614-358-6190
team@roguefitness.com

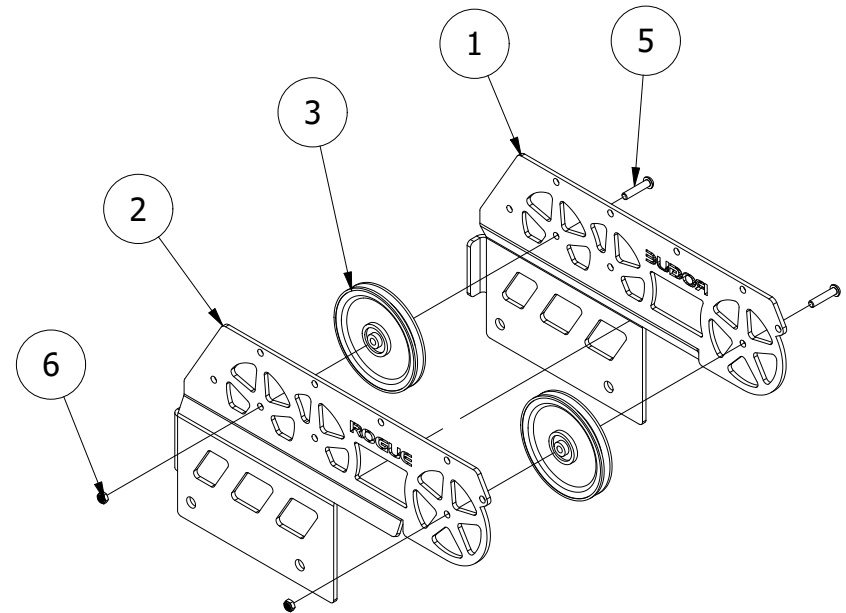


DETAIL A

STEP 5:

PASS (1) GROMMET OVER THE CLEVIS END AND 1" BALL STOP.

SEAT TOP AND BOTTOM GROMMET INTO THE TOP CROSSMEMBER HOLES. SEE DETAIL A.



STEP 6:

ASSEMBLE THE SLINGER SIDE PLATES TO THE PULLEYS.

INSTALL THE REAR PULLEY IN THE REAR PLATE LOCATION AS SHOWN.

DO NOT FULLY TIGHTEN HARDWARE.

DISCLAIMER

Resistance training, gymnastics training, and activities at height are potentially dangerous and may lead to severe injury or even death. Use common sense when training, to obtain instruction in the proper execution of movements, and understand your limitations. This equipment must only be used by competent and responsible persons, or under the direct and visual control of a competent and responsible person. Obtaining instruction in appropriate techniques and methods of use is your own responsibility. You assume all risks and responsibilities for all damage, injury or death which may occur during or following incorrect use of this equipment in any matter whatsoever. Rogue Fitness bears no liability beyond the replacement value of the equipment in question.



WARNING!



MISUSE OF THIS CAN RESULT IN
SEVERE INJURY

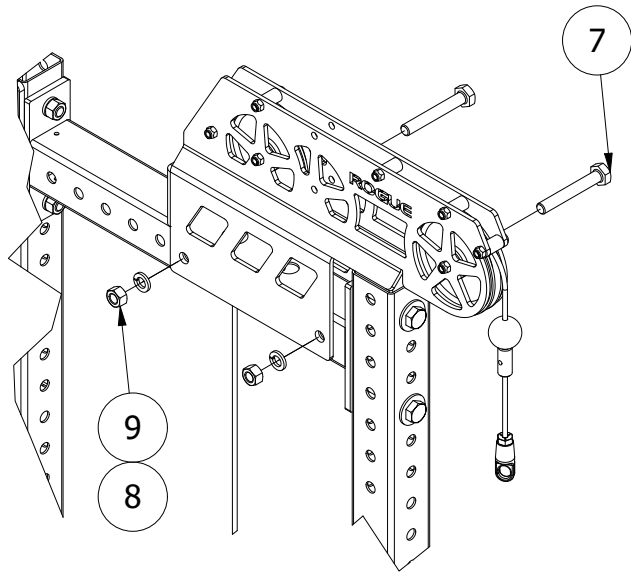
BOTH ROGUE FITNESS AND BUYER DISCLAIM ANY EXPRESS OR IMPLIED WARRANTY, INCLUDING, WITHOUT LIMITATION, WARRANTIES OR MERCHANTABILITY AND/OR FITNESS FOR A PARTICULAR PURPOSE WITH RESPECT TO THE EQUIPMENT. BUYER ASSUMES ALL LIABILITY IN USE OF EQUIPMENT.



Rogue Fitness
545 E 5th Ave.
Columbus, Ohio 43201
614-358-6190
team@roguefitness.com

ROGUE

MONSTER LITE SLINGER



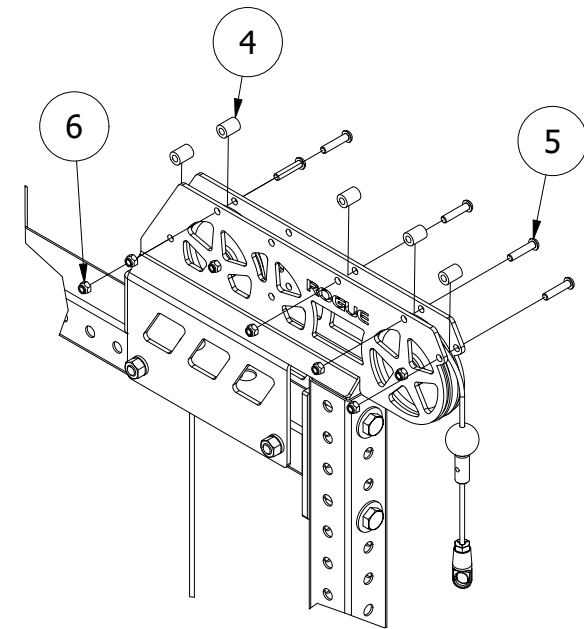
STEP 7:

ASSEMBLE SLINGER FRAME TO THE TOP OF THE RACK AS SHOWN.

DO NOT FULLY TIGHTEN HARDWARE.

DISCLAIMER

Resistance training, gymnastics training, and activities at height are potentially dangerous and may lead to severe injury or even death. Use common sense when training, to obtain instruction in the proper execution of movements, and understand your limitations. This equipment must only be used by competent and responsible persons, or under the direct and visual control of a competent and responsible person. Obtaining instruction in appropriate techniques and methods of use is your own responsibility. You assume all risks and responsibilities for all damage, injury or death which may occur during or following incorrect use of this equipment in any matter whatsoever. Rogue Fitness bears no liability beyond the replacement value of the equipment in question.



STEP 8:

LAY THE CABLE OVER THE PULLEYS AS SHOWN.

INSTALL PLASTIC SPACERS OVER CABLE WITH 3/8" HARDWARE.

NOTE: CABLE SHOULD RUN OVER PULLEYS BUT UNDER PLASTIC SPACERS.

TIGHTEN ALL 5/8" AND 3/8" HARDWARE.



WARNING!

MISUSE OF THIS CAN RESULT IN SEVERE INJURY

BOTH ROGUE FITNESS AND BUYER DISCLAIM ANY EXPRESS OR IMPLIED WARRANTY, INCLUDING, WITHOUT LIMITATION, WARRANTIES OR MERCHANTABILITY AND/OR FITNESS FOR A PARTICULAR PURPOSE WITH RESPECT TO THE EQUIPMENT. BUYER ASSUMES ALL LIABILITY IN USE OF EQUIPMENT.



Rogue Fitness
545 E 5th Ave.
Columbus, Ohio 43201
614-358-6190
team@roguefitness.com

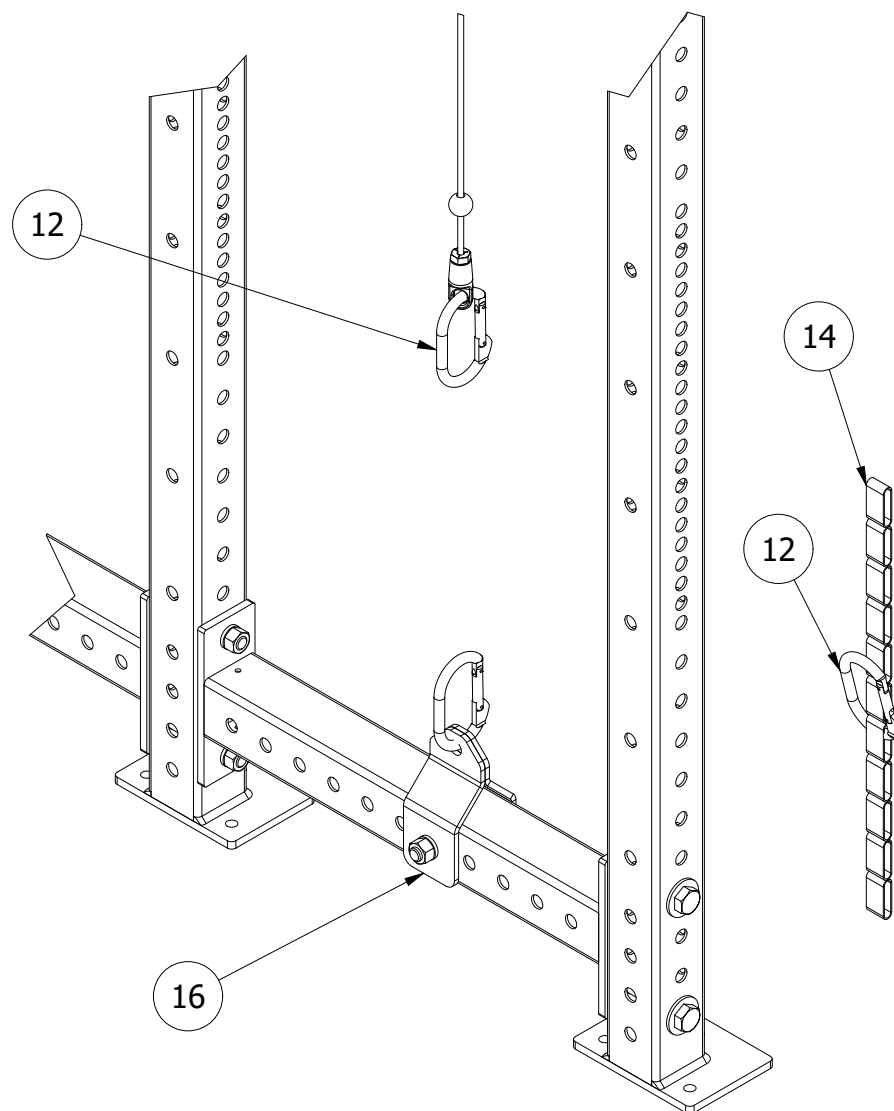
STEP 9:

SECURE THE SHACKLE IN 5TH HOLE FROM THE OUTSIDE, MAKE SURE THAT THE CABLE RUNS VERTICALLY.

NOTE:

ON 90" RACKS, THE EXTENSION STRAP IS NOT REQUIRED HOWEVER THE EXTENSION STRAP AND SPARE SILVER CARABINER CAN BE USED TO INCREASE THE LENGTH OF THE SLINGER CABLE.

IF USING THE EXTENSION STRAP, ATTACH THE LOWER LOOP OF THE STRAP TO THE SHACKLE, AND THE CARABINER CAN BE MOVED UP OR DOWN DEPENDING ON DESIRED EXTENSION.



DISCLAIMER

Resistance training, gymnastics training, and activities at height are potentially dangerous and may lead to severe injury or even death. Use common sense when training, to obtain instruction in the proper execution of movements, and understand your limitations. This equipment must only be used by competent and responsible persons, or under the direct and visual control of a competent and responsible person. Obtaining instruction in appropriate techniques and methods of use is your own responsibility. You assume all risks and responsibilities for all damage, injury or death which may occur during or following incorrect use of this equipment in any matter whatsoever. Rogue Fitness bears no liability beyond the replacement value of the equipment in question.



WARNING!



MISUSE OF THIS CAN RESULT IN
SEVERE INJURY

BOTH ROGUE FITNESS AND BUYER DISCLAIM ANY EXPRESS OR IMPLIED WARRANTY, INCLUDING, WITHOUT LIMITATION, WARRANTIES OR MERCHANTABILITY AND/OR FITNESS FOR A PARTICULAR PURPOSE WITH RESPECT TO THE EQUIPMENT. BUYER ASSUMES ALL LIABILITY IN USE OF EQUIPMENT.

R

Rogue Fitness
545 E 5th Ave.
Columbus, Ohio 43201
614-358-6190
team@roguefitness.com

ROGUE

MONSTER LITE SLINGER

STEP 10:

TO ATTACH SHEATH, SLIDE SHEATH FULLY OVER CABLE.

ATTACH BANDS TO CABLE CARABINER AND SHACKLE CARABINER.

NOTE:

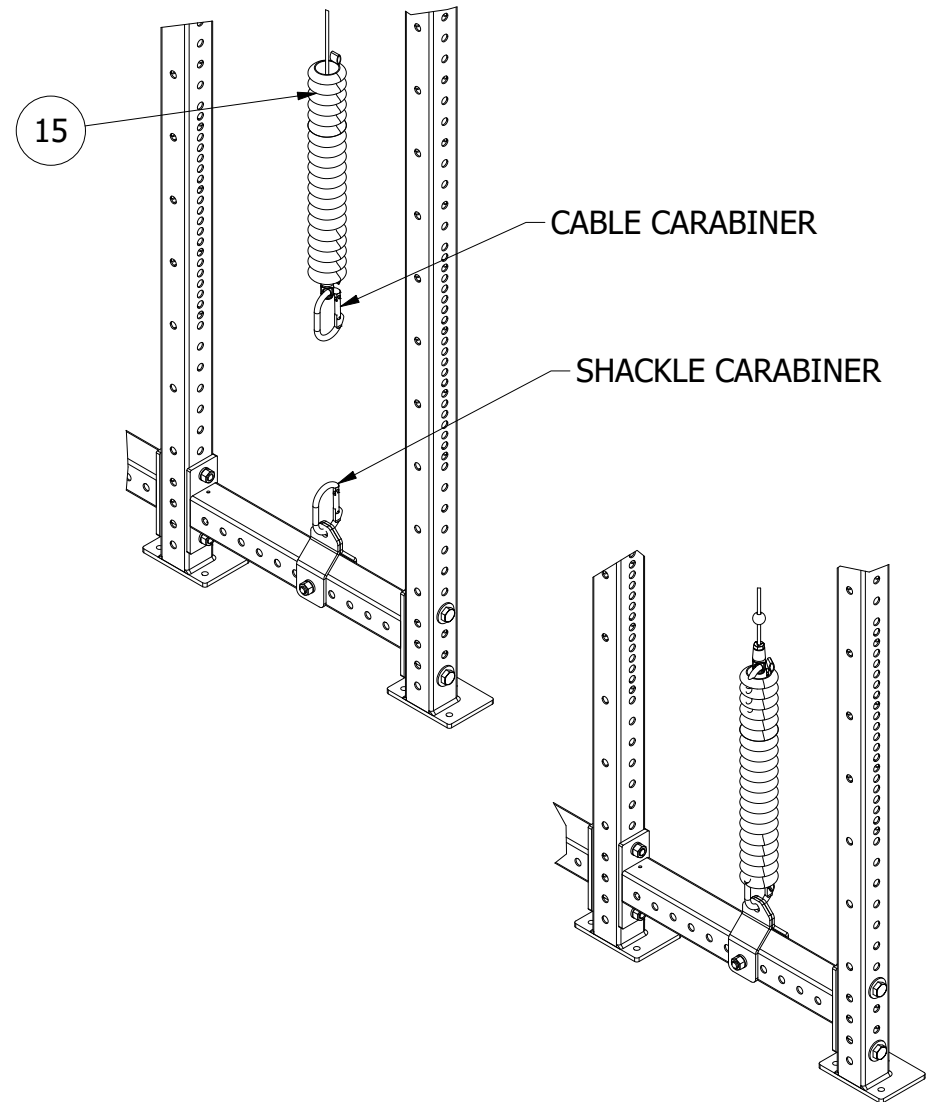
STANDARD MONSTER BANDS SHOULD BE DOUBLED UP.

SLIDE ONE END OF THE BAND THROUGH THE SHACKLE CARABINER SUCH THAT THE BAND IS CENTERED ON THAT CARABINER. THEN CLIP BOTH ENDS OF THE BAND INTO THE CABLE CARABINER.

STEP 11:

SLIDE SHEATH BACK DOWN OVER BAND AND CLIP BOTH ENDS INTO CABLE & SHACKLE CARABINERS.

****ENSURE BAND SHEATH IS ALWAYS SECURED OVER BANDS DURING USE****



DISCLAIMER

Resistance training, gymnastics training, and activities at height are potentially dangerous and may lead to severe injury or even death. Use common sense when training, to obtain instruction in the proper execution of movements, and understand your limitations. This equipment must only be used by competent and responsible persons, or under the direct and visual control of a competent and responsible person. Obtaining instruction in appropriate techniques and methods of use is your own responsibility. You assume all risks and responsibilities for all damage, injury or death which may occur during or following incorrect use of this equipment in any matter whatsoever. Rogue Fitness bears no liability beyond the replacement value of the equipment in question.



MISUSE OF THIS CAN RESULT IN SEVERE INJURY

BOTH ROGUE FITNESS AND BUYER DISCLAIM ANY EXPRESS OR IMPLIED WARRANTY, INCLUDING, WITHOUT LIMITATION, WARRANTIES OR MERCHANTABILITY AND/OR FITNESS FOR A PARTICULAR PURPOSE WITH RESPECT TO THE EQUIPMENT. BUYER ASSUMES ALL LIABILITY IN USE OF EQUIPMENT.

R
Rogue Fitness
545 E 5th Ave.
Columbus, Ohio 43201
614-358-6190
team@roguefitness.com