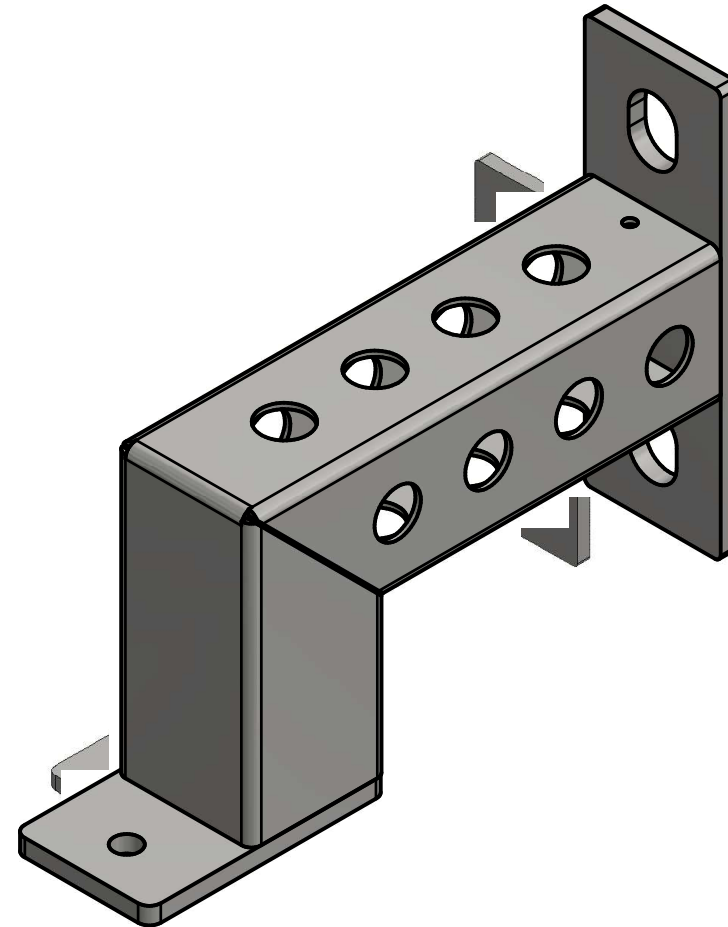


### GENERAL GUIDELINES:

- PLEASE READ THESE CUSTOMER INSTRUCTIONS THOROUGHLY PRIOR TO ASSEMBLING.

### TOOLS REQUIRED:

- 1-1/2" Wrench/Socket



\* SEE SHEET 2 FOR ITEM DESCRIPTIONS AND QUANTITIES \*

## DISCLAIMER

Resistance training, gymnastics training, and activities at height are potentially dangerous and may lead to severe injury or even death. Use common sense when training, to obtain instruction in the proper execution of movements, and understand your limitations. This equipment must only be used by competent and responsible persons, or under the direct and visual control of a competent and responsible person. Obtaining instruction in appropriate techniques and methods of use is your own responsibility. You assume all risks and responsibilities for all damage, injury or death which may occur during or following incorrect use of this equipment in any matter whatsoever. Rogue Fitness bears no liability beyond the replacement value of the equipment in question.



MISUSE OF THIS CAN RESULT IN  
SEVERE INJURY

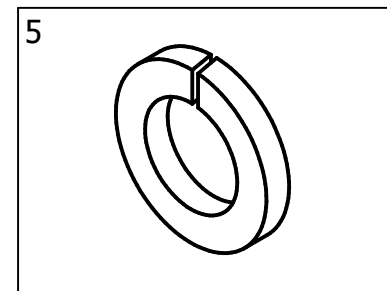
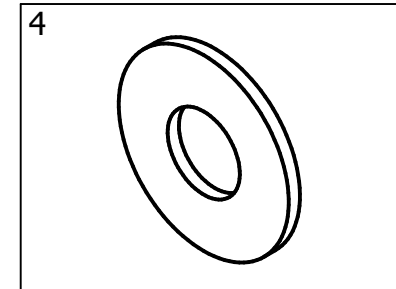
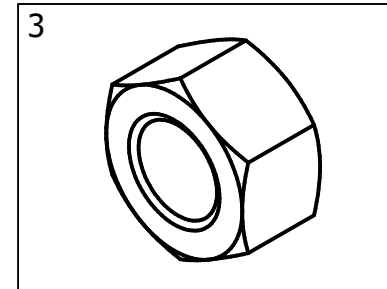
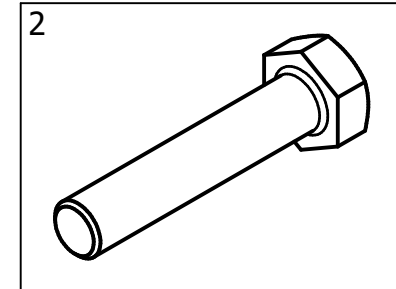
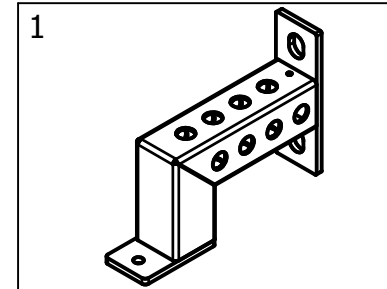
BOTH ROGUE FITNESS AND BUYER DISCLAIM ANY EXPRESS OR IMPLIED WARRANTY, INCLUDING, WITHOUT LIMITATION, WARRANTIES OR MERCHANTABILITY AND/OR FITNESS FOR A PARTICULAR PURPOSE WITH RESPECT TO THE EQUIPMENT. BUYER ASSUMES ALL LIABILITY IN USE OF EQUIPMENT.

**Rogue Fitness**  
545 E 5th Ave.  
Columbus, Ohio 43201  
614-358-6190  
team@roguefitness.com

# ROGUE

## MONSTER RACK MINI FEET

INCLUDED PARTS  
 \*NOTE: IMAGES NOT SHOWN TO SCALE



PARTS LIST		
ITEM	QTY	PART NUMBER
1	2	Monster Rack Mini Feet
2	4	1" x 5" Hex Bolt
3	4	1" Hex Nut
4	4	1" Flat Washer
5	4	1" Split Lock Washer

## DISCLAIMER

Resistance training, gymnastics training, and activities at height are potentially dangerous and may lead to severe injury or even death. Use common sense when training, to obtain instruction in the proper execution of movements, and understand your limitations. This equipment must only be used by competent and responsible persons, or under the direct and visual control of a competent and responsible person. Obtaining instruction in appropriate techniques and methods of use is your own responsibility. You assume all risks and responsibilities for all damage, injury or death which may occur during or following incorrect use of this equipment in any matter whatsoever. Rogue Fitness bears no liability beyond the replacement value of the equipment in question.



**WARNING!**



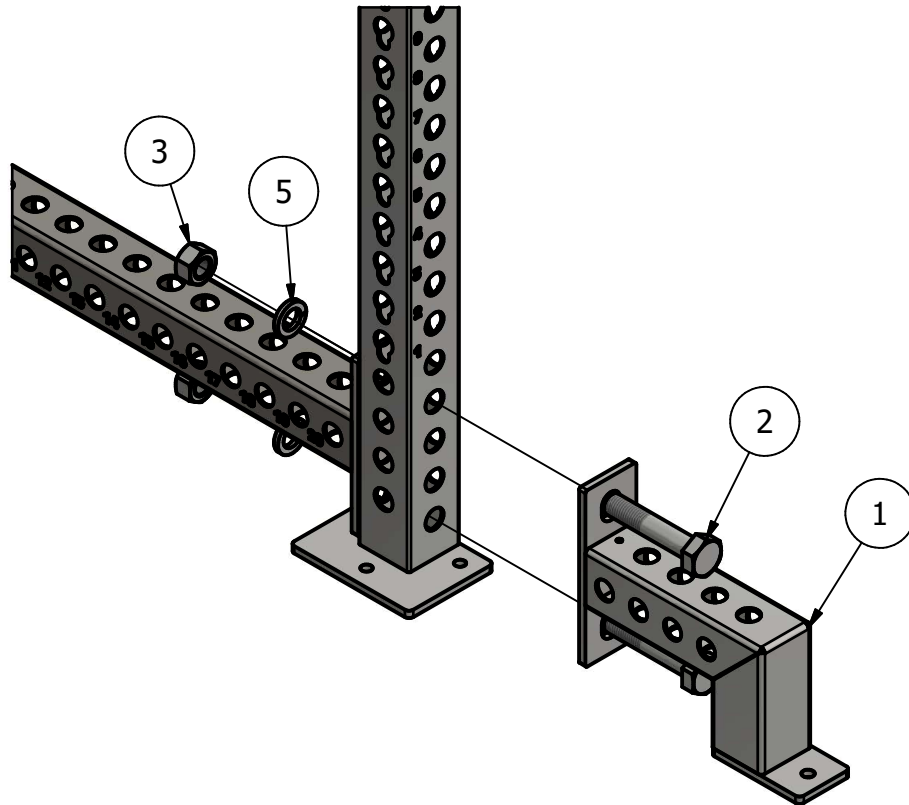
MISUSE OF THIS CAN RESULT IN SEVERE INJURY

BOTH ROGUE FITNESS AND BUYER DISCLAIM ANY EXPRESS OR IMPLIED WARRANTY, INCLUDING, WITHOUT LIMITATION, WARRANTIES OR MERCHANTABILITY AND/OR FITNESS FOR A PARTICULAR PURPOSE WITH RESPECT TO THE EQUIPMENT. BUYER ASSUMES ALL LIABILITY IN USE OF EQUIPMENT.

**Rogue Fitness**  
 545 E 5th Ave.  
 Columbus, Ohio 43201  
 614-358-6190  
 team@roguefitness.com

# ROGUE

## MONSTER RACK MINI FEET



**Step 1:** Using 1" x 5" Hex Bolts, 1" Split Lock Washers, and 1" Hex Nuts, attach the Monster Rack Mini Foot to the upright. If you are attaching the Monster Rack Mini Feet to an already assembled Monster Rack, some disassembly will be required.

**Note:** 1" Flat Washer only required if the Monster Rack Mini Foot is being attached to an upright that does not have an endplate on the other side.

## DISCLAIMER

Resistance training, gymnastics training, and activities at height are potentially dangerous and may lead to severe injury or even death. Use common sense when training, to obtain instruction in the proper execution of movements, and understand your limitations. This equipment must only be used by competent and responsible persons, or under the direct and visual control of a competent and responsible person. Obtaining instruction in appropriate techniques and methods of use is your own responsibility. You assume all risks and responsibilities for all damage, injury or death which may occur during or following incorrect use of this equipment in any matter whatsoever. Rogue Fitness bears no liability beyond the replacement value of the equipment in question.



MISUSE OF THIS CAN RESULT IN  
SEVERE INJURY

BOTH ROGUE FITNESS AND BUYER DISCLAIM ANY EXPRESS OR IMPLIED WARRANTY, INCLUDING, WITHOUT LIMITATION, WARRANTIES OR MERCHANTABILITY AND/OR FITNESS FOR A PARTICULAR PURPOSE WITH RESPECT TO THE EQUIPMENT. BUYER ASSUMES ALL LIABILITY IN USE OF EQUIPMENT.

**Rogue Fitness**  
545 E 5th Ave.  
Columbus, Ohio 43201  
614-358-6190  
team@roguefitness.com